

Using Analytics Overview Dashboard as a Supervisor

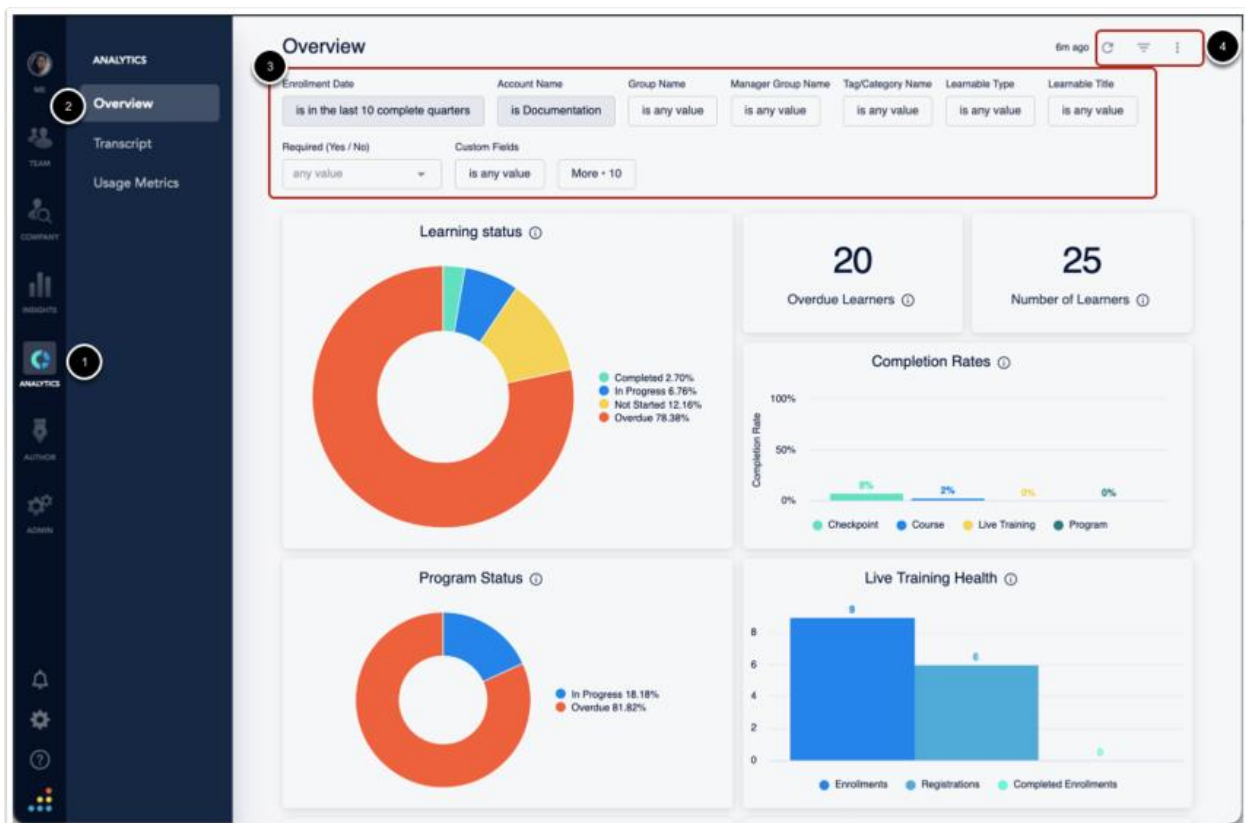
The Analytics Reports will give you a view of all enrollments data across all accounts setup within your instance of Bridge. These reports will let you pull a comprehensive list of information and allow you to include deleted users!

NOTES:

- The Analytics Reports are still in Beta and may change.
- Some features may be restricted based on permissions for your user role.
- **Managers'** view will be identical to the admin's view, the only differences are the users and team group names that they can filter for.
- There is a one-hour cache for Analytics, this means if you have new data it could take up to an hour to populate.

To get to the new Analytics reports you will want to select **Analytics** in the global navigation and then select the **Overview** option.

Filters in the Analytics report



To access the Analytics report you will go to the **Analytics** [1] option in the navigation menu and select **Overview** [2]. Here you have several **filter options** [3] and the options to **Search, Hide Filters, and Additional Options** [4].

Filter options

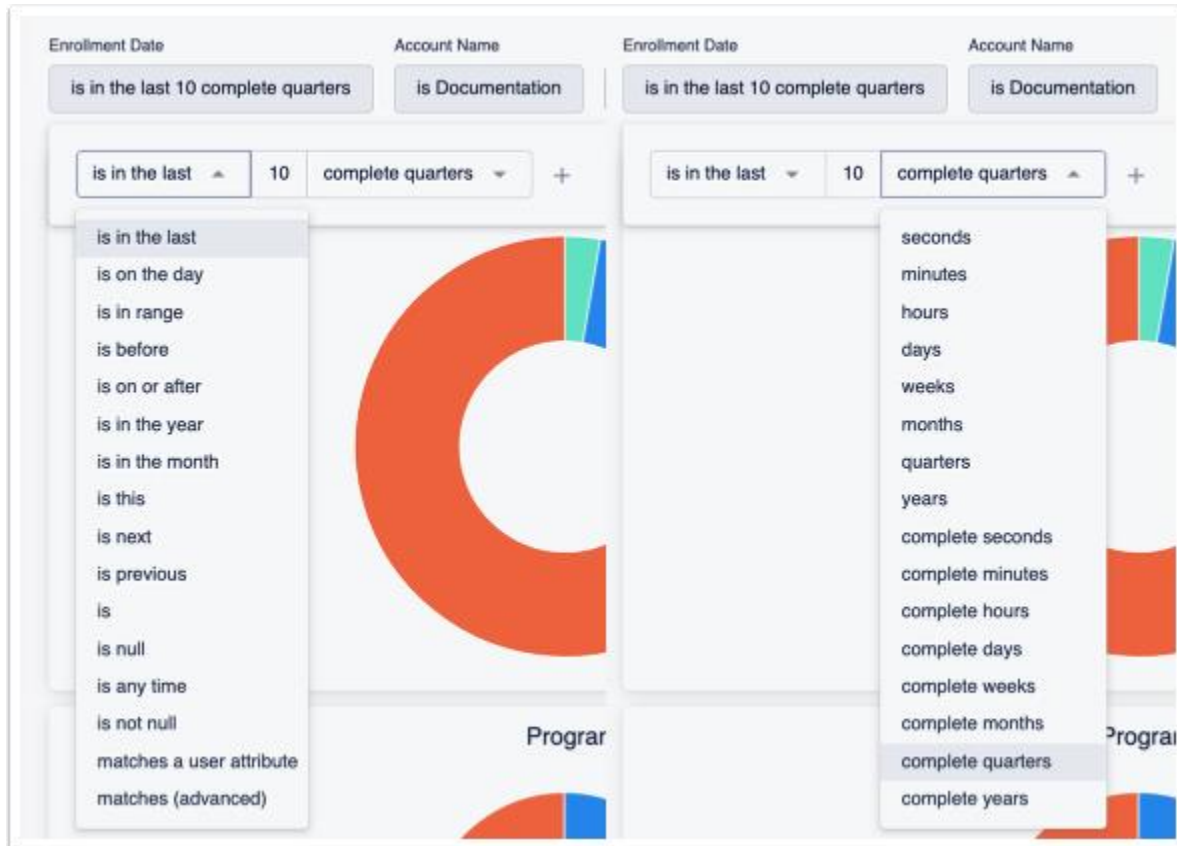


There are several filters you can choose from to pull data on your account; **Enrollment Date** [1], **Account Name** [2], **Group Name** [3], **Manager Group Name** [4], **Tag/Category Name** [5], **Learnable Type** [6], **Learnable Title** [7], **Required (Yes / No)** [8], **Custom Fields** [9] and additional enrollments and learning item filter options [10].

The **Account Name** [2] will allow you to specify if you want to look for the root accounts information or any of the subaccounts information specifically.

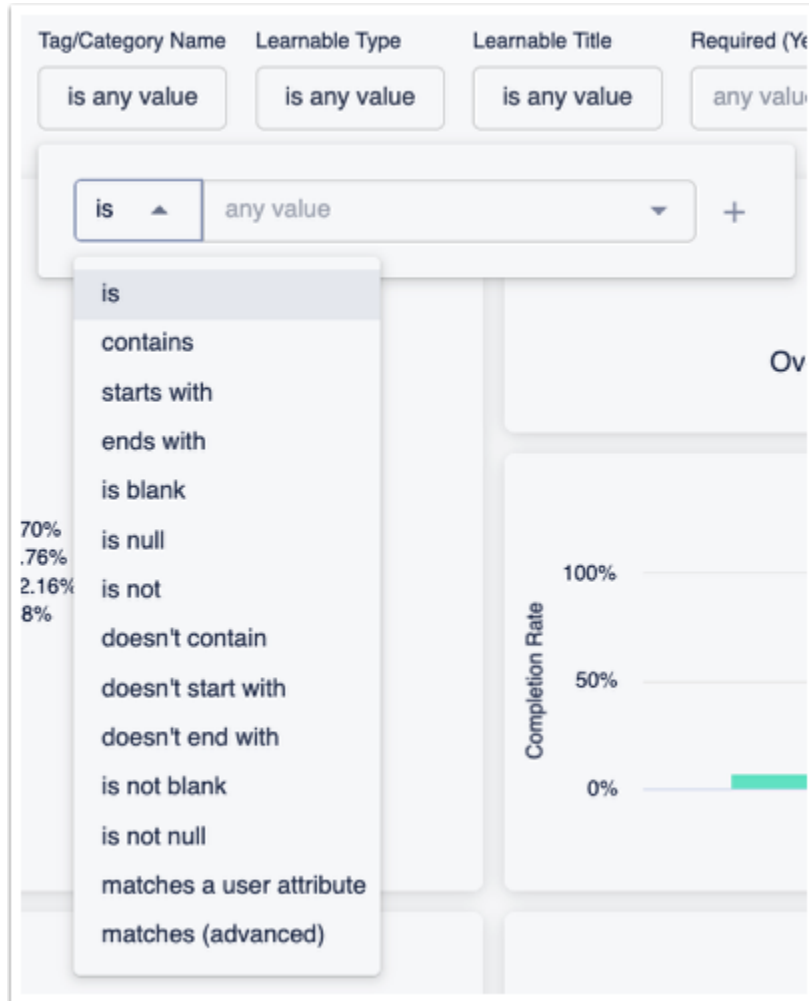
The **Required (Yes / No)** [8] filter option will allow you to select if you want to look specifically for required or optional enrollments; leaving this filter as-is will search for both enrollment types.

Enrollment Date



The **Enrollment Date** filter can be set to various options, as seen in the screenshots above. You can choose from multiple options for this filter, such as 'is in the last' 'x' (this variable is one you manually type in) 'seconds', 'minutes', 'hours', 'days', 'weeks', etc.

Tag/Category Name and Learnable Titles Filter Options

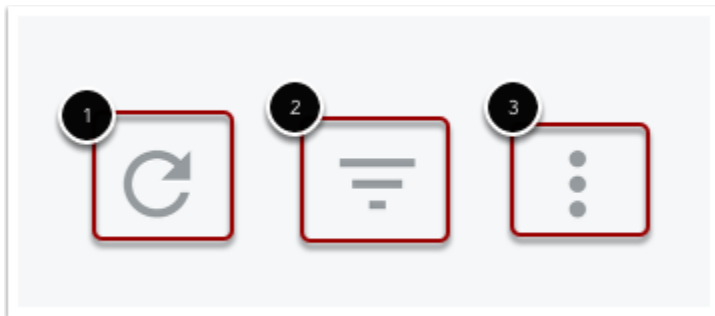


Tag/Category Name and Learnable titles all have the same options that allow you to specify if you want to look for a specific item.

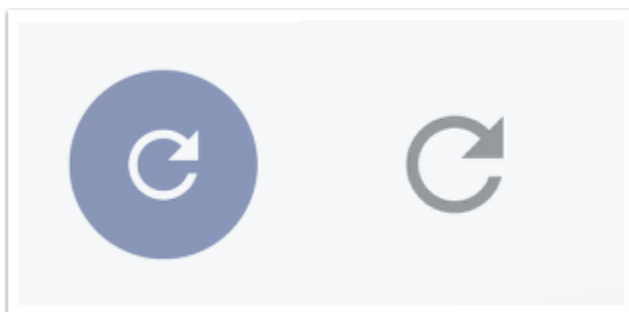
- **is** - This will only pull data for the exact item(s) that you selected.
- **contains** - This will pull data if the enrollment contains any of the item(s) selected.
- **starts with** - This will pull data if the enrollment starts with the item(s) selected.
- **ends with** - This will pull data if the enrollments end with the item(s) selected.
- **is blank** - This will pull data if there is a group, tag/category, or learnable item(s) with no name (aka blank name or title).
- **is null** - This will pull data if there is any item(s) with no name

- **is not** - This will pull data for any item that is not which item(s) you've selected.
- **doesn't contain** - This will pull data for any item that doesn't contain the item(s) you've selected.
- **doesn't start with** - This will pull data for any item that doesn't start with the item(s) you've selected.
- **doesn't end with** - This will pull data for any item that doesn't end with the item(s) you've selected.
- **is not blank** - This will pull data for any item(s) that is not blank.
- **is not null** - This will pull data for any item(s) that is not null.
- **matches a user attribute** - This will pull data for any item(s) that matches the user attribute(s) you've selected.
- **matches (advanced)** - This requires that you type the name exactly and will search as an 'is' statement.

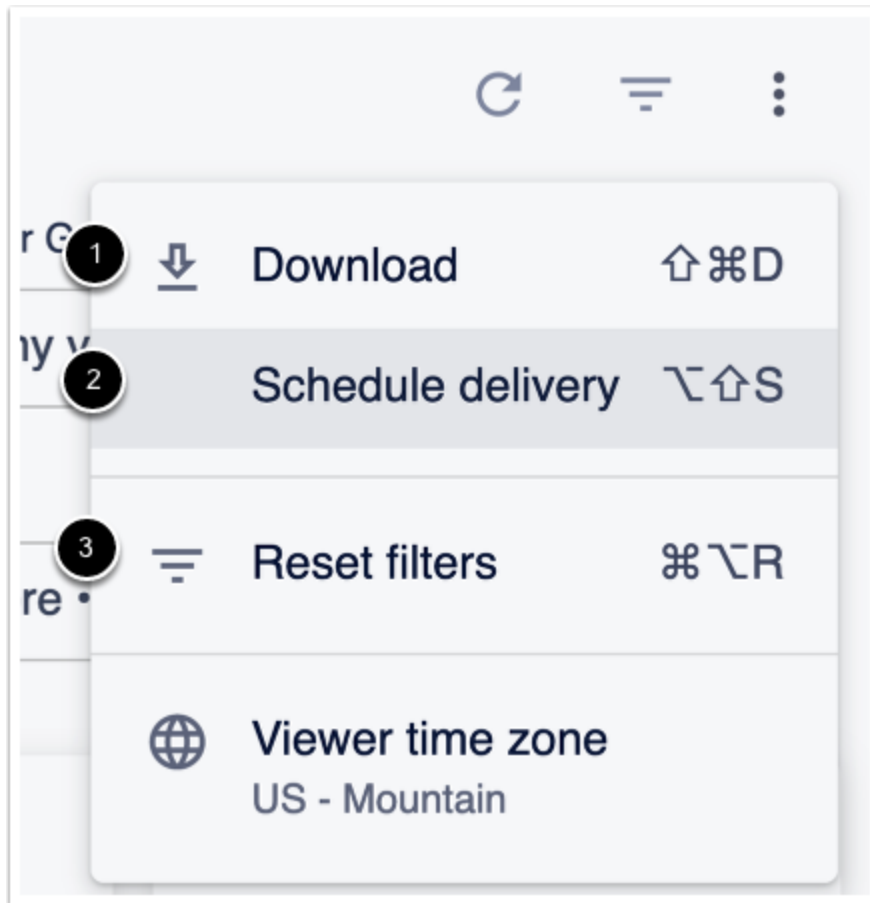
Remaining options



In the top right corner of the Analytics are you will have the option to **Update** [1], **Hide/Show Filters** [2], and **Dashboard Actions**[3]



Once you've set up some filters for the search parameters the **Search** arrow will show up as blue, this indicates there are new options selected that need to be searched for. If you've already hit the search button it will show in grey.



In the more options menu you will see the options to **Download** [1], **Schedule Delivery** [2], **Reset Filters** [3], and the **Viewer time zone** [4].

Download - This allows you to download the information that appears for your search. This will show the widgets and information within the page as it shows on the webpage.

Schedule Delivery - This allows you to schedule a new report and see existing ones that you've created to be sent out.