



DR. LARRY HOLLIER

# CHANCELLOR'S Notes



October 12, 2012

## Grant to increase primary care nurse practitioners

The LSUHSC School of Nursing has been competitively awarded a \$700,000 grant over two years by the Health Resources Services Administration of the US Department of Health and Human Services to help students pursuing advanced practice primary care nursing degrees meet educational expenses. The money can be used for tuition, books, fees, and reasonable living expenses.

Eligible full-time students in the LSUHSC Primary Care Family Nurse Practitioner Program may receive up to \$22,000, and eligible part-time students up to \$11,000. These students will be appointed as trainees in HRSA's Advanced Education Nursing Traineeship.

The Project Director of the grant is Dr. Marsha Bennett, LSUHSC Associate Dean for Nursing Research, Scholarship, and Science. She will work closely with Dr. Shelley Jeanfreau, Program Director for the LSUHSC Primary Care Family Nurse Practitioner Program.

The purpose of the program is to increase the number of primary care advanced practice nurses. The current primary care workforce is inadequate to meet the growing demand for primary care services.



Dr. Marsha Bennett

## \$2.7M LSUHSC grant to reduce alcohol use & improve HIV outcomes

Dr. Patricia Molina, Professor and Chair of Physiology at LSU Health Sciences Center New Orleans, has been awarded a \$2.7 million grant by the National Institutes of Health to develop a behavioral approach to reduce alcohol use and disorders in people living with HIV/AIDS. Alcohol use disorders are frequent in this population and are strongly associated with both decreased compliance in taking as well as the effectiveness of prescribed medicines. Alcohol is also linked to increased susceptibility to infection and viral replication.

A team of scientists led by Dr. Molina will work with LSUHSC physicians at the LSU HIV Outpatient Clinic as well as the LSUHSC School of Public Health. They will enroll 250 people living with HIV/AIDS in a clinical study that will compare intervention with a Holistic Health Recovery Program adapted for Alcohol Use Disorders with a control group in achieving or maintaining viral load suppression, reducing alcohol use and HIV risk behaviors, and improving anti-retroviral therapy adherence. It is hoped that this intervention and its future implementation will improve clinical outcomes by enhancing patients' awareness of the biomedical and psychosocial consequences of alcohol use in HIV/AIDS, and by enhancing the knowledge, motivation, and skills necessary to modify behaviors that promote HIV disease progression. *see HIV, page 2*



Dr. Patricia Molina

## LSUHSC dental students mark passage to clinical care

The passage of the Class of 2015 from student to the clinical arena was officially and publicly marked during the White Coat Ceremony at the LSUHSC School of Dentistry this afternoon. Sixty-four LSUHSC dental students received their white coats, the symbol of clinical practice.

Following remarks from Dean Henry Gremillion, DDS, MAGD, 1976 LSUHSC School of Dentistry alumnus and UNO



Dr. Peter Fos

President Dr. Peter Fos, and Class Vice President, Brent Benoit, the students were coated by Drs. Peter Oliver, Alan Ripps, and John Ritchie. *see Coat, page 2*



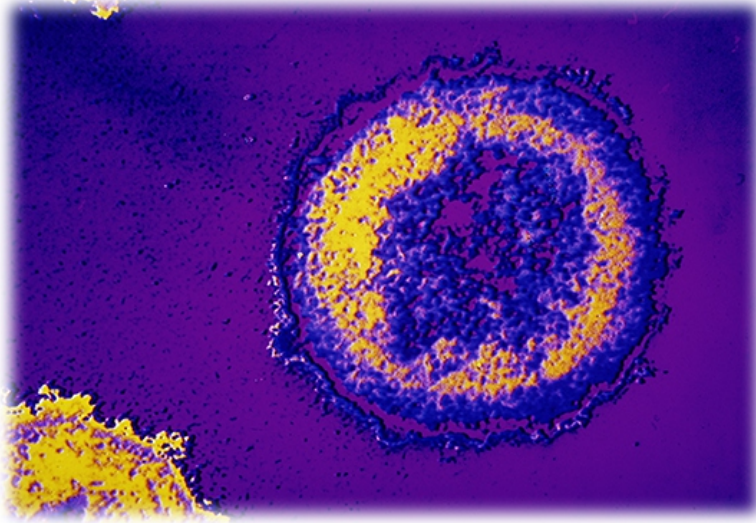
Dr. Alan Ripps coats Christy Marcello



**HIV, from page 1**

This is the first study of this sort and it is important because the Louisiana HIV+ population appears to have a high level of alcohol use disorders compared nationally, and Louisiana also has a very high number of new HIV cases diagnosed per year.

LSUHSC Comprehensive Alcohol Research Center researchers have demonstrated that chronic alcohol use elevates viral set point, increases lung viral levels during bacterial infection, promotes intestinal CD4+ and CD8+ T lymphocyte population changes that favor disease transmission, negatively affect bone metabolism, nitrogen



balance, and skeletal muscle wasting, ultimately leading to accelerated disease progression to end-stage disease.

Efficacy of the intervention will lead to improved adherence to and effectiveness of anti-retroviral therapy, improved quality of life, and decreased risky

behaviors that promote HIV transmission. ■

**Coat, from page 1**

Jeffrey Schott, Class President, took the audience through an hilarious recap of the Class of 2015's life as dental students, sparing neither classmates nor faculty, before leading the recitation of the LSU Health Sciences Center School of Dentistry Professional Oath.

Congratulations, Class of 2015! ■

**Flu shots going fast**

Activity was brisk in the School of Nursing this morning as faculty, staff, and students rolled up their sleeves to get this year's flu shot.



*Kathryn Mai prepares a dose*

While supplies last, there are two more days scheduled —October 17 and 18, from 9:00 a.m. - 3:00 p.m. on the 5th floor of the School of Nursing, Room 5B12.

There is no charge for students, but faculty and staff should be prepared with a check or money order for \$10.00. The check or money order should be made payable to LSUHSC. No cash please. An LSUHSC ID is required.



*Sisterly love? Alex Schell vaccinates her sister, Lauren. Both are nursing students.*

By the end of Thursday, the second day of the outreach, the nursing students had inoculated 502 LSUHSC faculty, staff, and students. ■