



CHANCELLOR'S Notes



December 14, 2012

DR. LARRY HOLLIER

LSUHSC clinical research fully accredited

The Council on Accreditation of the Association for the Accreditation of Human Research Protection Programs (AAHRPP) has awarded full accreditation to the LSU Health Sciences Center New Orleans Human Research Protection Program.



AAHRPP promotes high-quality, ethically sound research through an accreditation process that ensures that human research programs meet rigorous standards for quality and protection. To earn accreditation, organizations must provide tangible evidence—through policies, procedures, and practices—of their commitment to scientifically and ethically sound research and to continuous improvement.

In conjunction with numerous private and public partners, 300 LSUHSC faculty are currently conducting more than 900 human research studies on a broad range of health issues from drug and device studies to behavioral and educational studies.

As the "gold seal," AAHRPP accreditation offers assurances—to research participants, researchers, sponsors, government regulators, and the general public—that a program is focused first and foremost on excellence.

Public-private partnerships progress

Beginning with a press conference held on our campus Monday morning announcing MOUs with partners for three of the LSU public hospitals in the southern part of the state, the public-private partnerships to protect graduate medical education and preserve health care services are progressing through the approval process.



Steve Worley, President and CEO of Louisiana Children's Medical Center, addressing reporters at the press conference.

The Interim LSU Hospital and the new University Medical Center in New Orleans are partnering with Louisiana Children's Medical Center; In Houma, the Leonard J. Chabert Medical Center has two partners — Ochsner Health System and Terrebonne General Medical Center; and University Medical Center in Lafayette will partner with Lafayette General Medical Center.

See Partners, page 2

LSUHSC's Weiss chosen to help set national eye policy, research



Dr. Jayne Weiss

Kathleen Sebelius, Secretary of the United States Department of Health and Human Services, has invited Jayne S. Weiss, MD, Professor and Chair of the Department of Ophthalmology, Herbert E. Kaufman, MD Endowed Chair in Ophthalmology, and Director of LSU Eye Center of Excellence at LSU Health Sciences Center New Orleans, to serve on the National Advisory Eye Council. Effective immediately, she will serve a four-year term. Dr. Weiss is among the 12 members chosen in the United States, and the only member from Louisiana.

See Weiss, page 2

Partners, from page 1

The partnership in New Orleans required approval by the University Medical Center Management Board which met and voted Thursday afternoon. Then today, the LSU Board of Supervisors held a special meeting to consider the plan. The



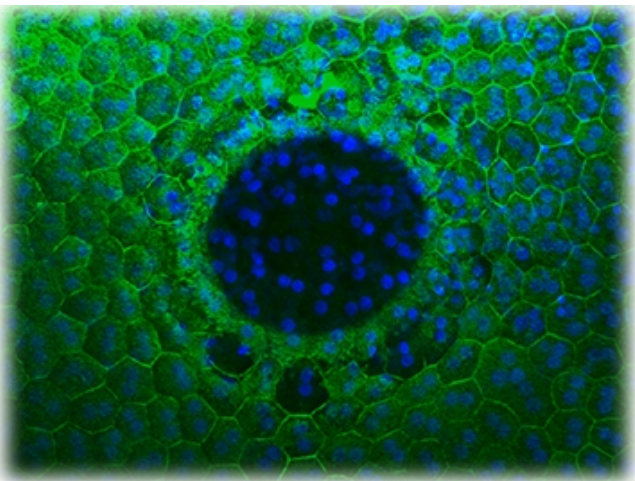
Board of Supervisors also voted to approve the MOUs, permitting the partnerships to advance.

In New Orleans, the partnership with Louisiana Children's Medical Center which operates Children's Hospital and Touro Infirmery, eliminates the need for the proposed ILH cuts and creates critical stability. This partnership preserves residency programs, eliminates the disruption of patient-physician relationships, and retains a safety-net hospital in New Orleans. Other benefits include that the Interim LSU Hospital maintains its current size and the psych beds, Level One Trauma beds are not closed, women's

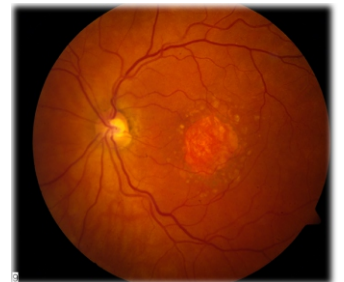
services are not reduced, immediate layoffs are eliminated with employees being given the first opportunity to obtain high quality employment with the partners. The arrangement also allows the Interim LSU Hospital to grow while transitioning into a world-class University Medical Center and destination hospital.

The MOUs state that it is the intention of the parties to enter into Cooperative Endeavor Agreements by the end of March, and after presentation to the Joint Budget Committee of the Louisiana Legislature, to close the transactions by July 1.

Weiss, from page 1



According to the National Eye Institute, the Council advises, assists, consults with, and makes recommendations to the Secretary of Health and Human Services and the Director of the National Eye Institute (NEI) on matters related to the activities carried out by and through the NEI and the policies respecting these activities. The Council may review applications for grants and cooperative agreements for research and training and recommend approval of applications for projects which show promise of making valuable contributions to human knowledge; may review any grant, contract, or cooperative agreement proposed to be made or entered into by the Institute;



may collect, by correspondence or by personal investigation, information as to studies which are being carried on in the United States or any other country and, with the approval of the Director of NEI, make available such information through appropriate publications for the benefit of public and private health entities, health professions personnel and scientists, and for the information of the general public.