

## CANCER SCREENING TOWARD TREATMENT

ENCOMPASSING ACCESS TO CARE

Bridging the gaps between cancer screening and providing treatment when the cancer is identified is the focus for the 2008 LSU HCSD cancer screening teams. The patient navigation model is being implemented to improve access to cancer care for the citizens of Louisiana. Important infrastructure for the early detection of cancer are provided to many of the LSUHSD facilities through partnerships and funding with the Louisiana Breast and Cervical Health Program, the Susan G. Komen Breast Cancer Foundation and the American Cancer Society.

### **The Patient Navigation Model for Early Detection and Care**

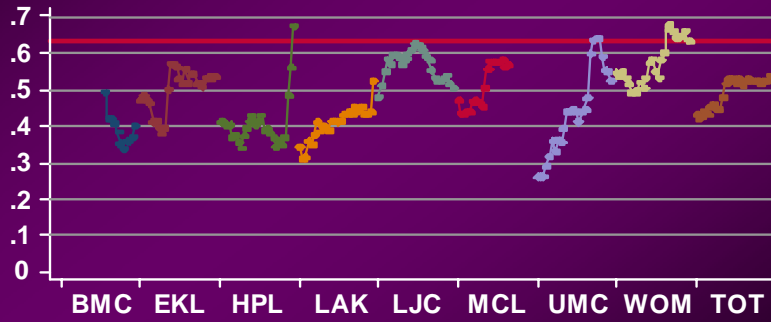
The establishment of patient navigation from screening through diagnosis and treatment is leading toward

- Decreased wait times between screening, diagnosis, and to treatment
- Finding cancer at earlier stages which may mean that individuals have more options for treatment
- Better chance for survival
- Treatments that are more cost effective
- Identifying areas for improvement throughout the LSUHSD System
- Continual strive to improve the mammography screening rates, with hope of reaching the "Healthy People 2010" benchmark far in advance of 2010.

**The Continuum of Cancer Screening toward Cancer Care Model** allows a multidepartment approach to patient care which can provide better services for the individuals in the area of early detection of cancer. It is felt that by strengthening the network of community partnerships, such as, the Louisiana Breast and Cervical Health Program, the Susan G. Komen Breast Cancer Foundation and American Cancer Society and other community programs there will be an increase in high quality models for early detection to treatment throughout the LSUHSD facilities.

# Mammography Rates Q1 2001 - Q2 2007

Mammogram in last year  
DEN = qrtclinic, SUB =



Time span includes Q1 2001 through Q2 2007  
Line = latest quarter 90ptile pared-mean benchmark = 0.63

# Disease Management Late Stage Breast Cancer - MCLNO

