

## Contact Us

### John P. Isché Library

433 Bolivar St.  
New Orleans, LA 70112-2223  
<http://www.lsuhs.edu/no/library>

#### CIRCULATION

504-568-6100  
[icirc@lsuhsc.edu](mailto:icirc@lsuhsc.edu)

#### REFERENCE

504-568-6102  
[reference@lsuhsc.edu](mailto:reference@lsuhsc.edu)

#### INTERLIBRARY LOAN

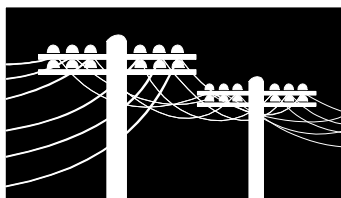
504-568-6101  
[ILL@lsuhsc.edu](mailto:ILL@lsuhsc.edu)

### Dental School Library

1100 Florida Ave.  
New Orleans, LA 70119-2477

504-941-8158

[dentlib@lsuhsc.edu](mailto:dentlib@lsuhsc.edu)  
<http://www.lsusd.lsuhs.edu/libr/>



## Library Layout

The Isché Library occupies the 3rd, 4th, and 5th floors of the Resource Center. Photocopiers and Library System computers are located on each floor.

### Third Floor

Entrance & Exit  
24 hour Library Commons  
Departments & Offices  
Reference & Reserve materials

### Fourth Floor

Group Study Rooms  
Audio-Visual Equipment  
Books/Monographs (shelved by call number)  
Computer Lab (Room 401K)  
Computer Services Classroom (Room 405)  
Rare Books Collection  
Open 8:30am-4:30pm—by appointment

### Fifth Floor

Journals (shelved alphabetically)

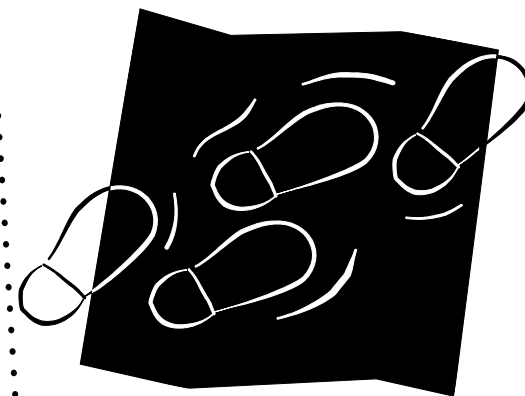


Updated 12/12 HIP



## Library Information

Introductory  
Guide to the  
John P. Isché  
Library



# Library Information

## Loan Periods

Books/Monographs 2 weeks; 1 renewal

General Reserve Books

Overnight; checkout 1 hour before close, due 1 hour after open the next day

Journals/Periodicals

Bound 1 week; no renewals

Unbound 1 day; no renewals

Nursing Journals

Do not circulate

## Borrowing Privileges

All Library patrons must bring proper ID each time they use the Library.

<u>Institution</u>	<u>Available to</u>	<u>Proper ID</u>
LSUHSC	Faculty, Staff, Students & Residents	LSUHSC ID

Tulane Medical Center	Faculty, Residents, Staff & Students	TMC ID
-----------------------	--------------------------------------	--------

Area Licensed Health Professionals	Driver's license & appropriate health license
------------------------------------	---

**Reserve Materials** are kept behind the Circulation Desk. To retrieve, consult a Library Staff member. Some Reserve items may be taken out of the Libraries on overnight loan. Please note, overdue fines are incurred for late Reserve items.

Search the **Library Catalog:**

<http://innopac.lsuhs.edu/>

## Library Hours\*

Monday-Thursday	8am-10pm
Friday	8am-6pm
Saturday	9:30am-6pm
Sunday	1:30pm-10pm

\*Please check the [website](#) for Holiday hours.

## Reference Hours\*

Monday-Thursday	8am-8pm
Friday	8am-4:30pm

\*Reference Librarians are available during these hours for in-person research assistance as well as over webchat (<http://www.lsuhs.edu/no/Library/services/help.html>) and email ([reference@lsuhs.edu](mailto:reference@lsuhs.edu)).

**Electronic Materials** include E-Books and E-Journals. Most of the Libraries' current journal collection is electronic. The Libraries actively acquire E-Books where appropriate and possible. Check the Library [catalog](#) and/or the [E-Journals list](#) for titles.

**Interlibrary Loan** is available online via ILLiad. Create a profile and request materials from your office, lab, or home. Electronic copies of materials will be delivered to your email inbox when available. For more information visit: <http://illiad.lsuhs.edu/illiad/ill.html>.

## Technology

### Photocopying & Printing:

Photocopiers are available on each floor of the Library and accept small bills, coins, and PayPaw cards. Printers only accept PayPaw cards.

If you do not have a Paw-Paw card, one may be purchased from the vending machine on the 3rd floor of the Library.

#### FEES

10¢ per page  
14¢ per double-sided page  
25¢ per color page

### Computer Facilities:

#### Open-Use Computer Lab

Available on the 4th floor of the Library. LSUHSC username and password required.

#### Wireless Access

Available throughout the Library. For assistance, inquire at the Circulation or Reference Desk.

#### Ethernet Ports

Located throughout the Library.

#### Public Access Computers

Computers are available to all patrons for use with Library Systems, LSUHSC email, and University application. Open Internet browsing is unavailable.

## For Further Assistance

<http://www.lsuhs.edu/no/library>

Phone: 504-568-6100

E-mail: [icirc@lsuhs.edu](mailto:icirc@lsuhs.edu)

