



LSU Health Sciences Center in New Orleans School of Nursing



# LSU HEALTH SCIENCES CENTER IN NEW ORLEANS SCHOOL OF NURSING



## **Elizabeth A. Humphrey, EdD, Dean**

Appointed to the Deanship: April 1, 1996

Appointed to the Health Sciences Center Faculty: August 1, 1974

Helen A. & James B. Dunn Professor February 1, 2000 - present

Faculty Academic Rank: Professor of Nursing

Address: School of Nursing  
1900 Gravier Street  
New Orleans, LA 70112

Telephone Number: (504) 568-4106

Website: <http://nursing.lsuhscc.edu/>

## **Administration**

ELIZABETH A. HUMPHREY, EdD  
*Dean and Helen A. & James B. Dunn Professor*

CAROLYN MOSLEY, PhD, FAAN  
*Associate Dean for Academic Administration*

DEMETRIUS PORCHE, DNS  
*Associate Dean for Research and Evaluation and  
St. Charles General Auxiliary Professor*

KAY LOPEZ, DNS  
*Acting Assistant Dean for Student Services*

THOMAS SPIERS, BS, MBA  
*Assistant Dean for Business Affairs*

BARBARA Y. KEARNEY, MEd, MS  
*Associate Professor of Nursing*

KAY LOPEZ, DNS  
*Acting Assistant Dean for Student Services*

CAROLYN MOSLEY, PhD, FAAN  
*Associate Dean for Academic Administration*

DEMETRIUS PORCHE, DNS  
*Associate Dean for Research and Evaluation*

JACQUELINE RHOADS, PhD  
*Professor of Nursing*

SUSAN S. RICK, DNS  
*Associate Professor of Nursing*

## **Administrative Council**

ELIZABETH A. HUMPHREY, EdD  
*Chairman*

LARRY H. HOLLIER, MD  
*Chancellor, Ex-Officio*

JOSEPH M. MOERSCHBAECHER, III, PhD  
*Vice Chancellor, Ex-Officio*

JERILYN SCHALLER, MN  
*Assistant Professor of Clinical Nursing*

JANE F. SUMNER, PhD  
*Associate Professor of Nursing*

ANGELIQUE WHITE-WILLIAMS, DNS  
*Instructor of Nursing*

## HISTORY

Formal nursing education in the LSU System began in the summer of 1929 on the Baton Rouge campus. The Louisiana State League of Nursing Education requested specific courses as additional education for registered nurses. The Daughters of Charity at Charity Hospital of New Orleans recognized the need for specialized professional education for nurses holding responsible positions in hospitals and schools of nursing education and suggested the LSU courses become a permanent program to prepare registered nurses for positions in teaching, supervision, and administration. The new program was inaugurated with courses being taught at Charity Hospital in 1931. Between 1931 and 1938, there were individual courses available including supervision in nursing, ward management, ward instruction and several general education courses. Beginning with the 1938 school year, a formally recognized nursing curriculum was initiated for registered nurses.

In 1933, a program leading to the degree of Bachelor of Science in Nursing Education was approved by the LSU System. The newly established Department of Nursing graduated three students in the first class. During the first years of its existence, the Department functioned, except for a brief period, under the General Extension Division, as a department of the Teachers' College of LSU, Baton Rouge. Students were admitted to this program on the basis of having completed a diploma program in nursing and credit was allowed on basic nursing course work. Students graduating from this program were granted the Bachelor of Science in Nursing Education degree, which was awarded at ceremonies on the Baton Rouge Campus.

In 1937, the Department was transferred to the School of Medicine in New Orleans. The "combined program" or "five year program" was instituted. This program consisted of two years of college work in advance of the three years in the regular diploma program of the Charity Hospital, New Orleans School of Nursing. Admissions to this program were discontinued in June 1952.

Until May 1, 1949, Sister Henrietta Guyot, Head of the Department of Nursing was not only in charge of the Department but was also Head of the Charity School of Nursing and of the Nursing Service Department of Charity Hospital. Sister Henrietta was relieved of responsibility for nursing service at Charity Hospital on May 1, 1949, and for the Charity Hospital School of Nursing on July 1, 1951. This allowed her to devote full attention to administration of the Nursing Program at LSU until February 1965 when she retired from the Department.

With the goal of expanding its program to meet regional and state nursing needs, in 1952, the Department of Nursing invited a survey team of six consultants to evaluate the resources available to establish a School of Nursing at the School of Medicine in New Orleans, and to draw up a plan of reorganization. The proposals growing out of this survey formed a blueprint for the development of a new baccalaureate curriculum in nursing which was inaugurated by the LSU System in 1955. Two programs of study were established.

1. A four year basic nursing program preparing high school graduates for professional nursing practice, and
2. A program of five semesters designed to supplement and enrich the preparation of graduate registered nurses for the practice of professional nursing (referred to as the Specialized Registered Nursing Program). Both of these programs led to the Bachelor of Science in Nursing

degree. The earlier program for registered nurses, the Bachelor of Science in Nursing Education, which included majors preparing for teaching and supervision, was discontinued in 1958.

The Louisiana State Board of Nurse Examiners accorded initial accreditation to the Program in Basic Nursing on September 16, 1955, and full approval on April 24, 1959. The Department of Nursing has held agency membership in the National League for Nursing, Department of Baccalaureate and Higher Degree Programs, since 1955.

Following a self-study report submitted by the faculty in September 1961, the first visit for national accreditation purposes was held in Spring 1962. As a result of this survey visit and report, the Department of Nursing received full initial accreditation of its basic program by the National League for Nursing on May 5, 1962. Since that time, the Bachelor of Science in Nursing Degree Program maintained full accreditation status with the National League for Nursing until 1998 when the program was accredited for 10 years by the Council on Collegiate Nursing Education. The next site visit for accreditation will occur in 2009.

In 1964, the Department of Nursing announced that as of June 1967, the separate program of study for registered nurses would be discontinued. The Department would continue the curriculum leading to the Bachelor of Science in Nursing degree. In addition to the basic students, registered nurses were admitted with a limited amount of advance standing credit granted on the basis of specific course examinations. The decision to make this change was based on recommendations from the National League for Nursing and was in line with improved educational practices in nursing.

On March 13, 1968, the Department of Nursing was relocated from the first floor of the School of Medicine Building on Tulane Avenue into two newly renovated buildings on Florida Avenue. These buildings were former World War II Navy barracks, which, after renovation, provided adequate office and classroom space for the existing program.

The Department of Nursing of the Medical School was accorded status as a separate and autonomous School by action of the Board of Supervisors in December 1968 and the official name became the School of Nursing of the Medical Center.

The Master of Nursing degree offering was approved March 23, 1972 by the Louisiana Coordinating Council for Higher Education and the first students were enrolled in the fall of 1972. The first Master of Nursing degrees were conferred in May 1975. The Master of Nursing degree program was granted initial accreditation by the National League for Nursing on December 9, 1977 and was continuously accredited by that agency until 1999. On March 24, 1998, the Master of Nursing program was accredited by the Council on Collegiate Nursing Education for a period of 10 years, with the next review due in 2009.

The Associate of Science in Nursing degree program was approved by the LSU Board of Supervisors on February 5, 1973, and the Louisiana Coordinating Council for Higher Education in March 1973.

The Louisiana State Board of Nurse Examiners granted approval August 1, 1973 and the first Associate of Science in Nursing degrees were awarded in August 1975. After 25 years, the Associate of Science in Nursing program graduated the last class in May 2000. The Program was continuously accredited by the National League of Nursing.

The Continuing Education Program began in January 1975 with the appointment of a Regional Coordinator for Continuing Education. This position was made available through a contractual agreement with the Louisiana State Nurses Association, and funded from a United States Department of Health, Education, and Welfare Special Project Grant. In 1978, funding from the Grant terminated and the program continued on State funds until 1986 when the program became self-supporting through self-generated income. The Continuing Education Program has been accredited by the American Nurses Credentialing Center as a provider of continuing education for the awarding of contact hours since July 1980.

On November 13, 1978, The University System purchased a six-story building, located at 420 South Prieur Street in New Orleans, to be used by the School. The structure, containing approximately 60,000 square feet of floor space, was completed in 1941 by Hotel Dieu Hospital and has been used for the Hotel Dieu diploma Nursing Program until the program closed in 1975. Over a period of years, The University System leased parts of this facility for the Associate of Science in Nursing Degree program (1972), for the Graduate Degree program (1973), for the School's administrative offices (1977).

After minimal renovation, the Bachelor of Science in Nursing program moved into the fifth and sixth floors of the building, June 11, 1979. Renovations to accommodate the Multimedia Center were more extensive, requiring almost a year to complete. On April 1, 1980, the Center moved from temporary quarters at 1100 Florida Avenue, into the newly renovated first floor of the building. This event marked the first time in eight years the School was located in one facility.

In December 1984, the School of Nursing and the School of Allied Health Professions moved into a new building, located at 1900 Gravier Street. This building is connected at the third floor to the Medical Education Building, which opened in 1981. The Doctor of Nursing Science degree offering was approved June 27, 1985 by the State of Louisiana, Board of Regents. The first students were enrolled in Fall 1985 and the first Doctor of Nursing Science degree was conferred in December 1988.

A reorganization of the structure of the School of Nursing into departments was implemented in March 1999. Faculty and courses are assigned to one of three departments – Adult Nursing, Family Nursing and Mental / Community Health Nursing.

On December 7, 2001, the Louisiana Board of Regents granted approval to initiate the curriculum leading to the Master of Nursing with a specialization in Nurse Anesthesia. Students began specialization coursework in January 2002.

## School Of Nursing Organization

The Dean is the Chief Administrator in the School.

There are three Associate Deans.

- Associate Dean for Academic Administration
- Associate Dean for Research and Evaluation
- Associate Dean for Professional Services & Community Activities

There are two Assistant Deans.

- Assistant Dean for Student Services – Acting
- Assistant Dean for Business Affairs

## CHRONOLOGY

Three people have served as Dean of the Louisiana State University Health Sciences Center School of Nursing.

June Anita Hannon, MA, (1970-1976)

Helen A. Dunn, DrPH (1976-1996)

Elizabeth A. Humphrey, EdD (1996-present)

## PHILOSOPHY

The School of Nursing faculty ascribes to the following beliefs. Nursing is a human process and a professional discipline whose spirit is caring. Nursing science and art are blended through the process of caring and genuine presence in response to human needs related to health. Individuals are unique and exist in the totality of their own experience. Individuals, in caring relationships, are dynamically interrelated with others and the community. Caring relationships in nursing exist for the “protection, promotion, and optimization of health and abilities; prevention of illness and injuries; alleviation of suffering through the diagnosis and treatment of human response; and advocacy in the care of individuals, families, communities and populations” (ANA, 2004). Nursing collaborates with other disciplines to promote human wholeness and healing.

The role of the School of Nursing community is to create a caring environment in which all are respected, nurtured, and celebrated. Nursing education fosters the innate desire for learning. The role of faculty is to support and cultivate the student's learning, scholarship, and practice. Learning is a life-long, active, engaging, and transformative experience. Ways of knowing in nursing include empirical, personal, ethical, aesthetic, and sociopolitical. In addition, faculty embrace the concept of “unknowing” which refers to approaching individuals without the preconceptions and assumptions that would interfere with receiving knowledge that only the individual can provide. Learners (clients/patients, students, faculty) recognize patterns and develop insights that enable them to find meaning in human experiences such as health and illness.

(Accepted as a Working Document by faculty ballot 6/8/04)



**CALENDAR 2005 – 2006**

**2005 Fall Semester**

**August**

Wednesday	03	Registration for undergraduate students; Annual registration for Nurse Anesthesia students
Thursday	04	Registration for graduate students; Orientation for new undergraduate students
Friday	05	Family Day
Wednesday	10	Course orientation for returning undergraduate students
Thursday	11	Classes begin
Friday	12	Orientation for graduate students
Tuesday	31	Final date for converting an "I" to a grade; Final date for dropping courses without receiving a grade of "W" and Final date for adding a course

**September**

Thursday	01	Final date for receipt or postmark of applications and supporting documents for undergraduate admission for Spring 2006
----------	----	---

Monday 05 Labor Day

**November**

Friday	04	Final date for defense of theses and dissertations for December 2005 commencement
Thursday	10	General Examination for doctoral candidacy
Friday	11	General Examination for doctoral candidacy
Monday	14	Student Health documents due for Spring 2006 enrollment
Tuesday	15	Final date for dropping courses or resigning from the University without receiving failing grades
Friday	18	Final date for submitting approved theses and dissertations for December 2005 commencement
Wednesday	23	Classes end
Thursday	24	Thanksgiving Holiday
Friday	25	Thanksgiving Holiday
Monday	28	Reading Day (no classes, no examinations)
Tuesday	29	Final examination period begins

**December**

Friday	02	Graduating student grades due
Monday	05	Final examination period ends
Tuesday	06	All grades due
Wednesday	07	Semester ends
Thursday	08	Commencement

**2006 Spring Semester**

**January**

Wednesday	04	Registration for undergraduate students
Thursday	05	Registration for graduate students; Orientation for new undergraduate students
Friday	06	Family Day
Wednesday	11	Course orientation for returning undergraduate students
Thursday	12	Classes begin
Friday	13	Course orientation for graduate students
Monday	16	Martin Luther King holiday
Tuesday	31	Final date for converting an "I" to a grade; Final date for dropping courses without receiving a grade of "W" and Final date for adding a course

**February**

Wednesday	01	Final date for receipt or postmark of application and supporting documents for Fall 2006 admission
Monday	27	Mardi Gras holiday
Tuesday	28	Mardi Gras holiday

**April**

Monday	10	Final date for defense of theses and dissertations for May 2006 commencement; Final date for dropping courses or resigning from the University without receiving failing grades
Tuesday	11	Spring Break begins at 7:00 pm
Tuesday	18	Classes resume
Thursday	20	General Examination for doctoral candidacy
Friday	21	General Examination for doctoral candidacy; Final date for submitting approved theses and dissertations for May 2006 commencement
Monday	24	Final date for dropping courses or resigning from the University without receiving a failing grade
Friday	28	Student health documents due to Student Health Office for Summer 2006 enrollment

**May**

Monday	01	Classes end
Tuesday	02	Reading Day (no classes; no exams)
Wednesday	03	Final examinations begin
Monday	08	Graduating students' grades due
Tuesday	09	Final examinations end
Wednesday	10	All grades due
Thursday	11	Semester ends
Saturday	20	Commencement

**Summer Term 2006**

**May**

Tuesday	23	Registration for undergraduate students for Summer 2006
Wednesday	24	Registration for graduate students for Summer 2006
Thursday	25	Classes begin

**June**

Friday	02	Final date to convert an "I" to a grade
Monday	05	Final date for adding courses or dropping courses without receiving a grade of "W"

**July**

Friday	07	Final date for defense of theses and dissertations
Tuesday	04	Independence Day Holiday
Thursday	06	General Examination for doctoral candidacy
Friday	07	General Examination for doctoral candidacy
Tuesday	11	Final date for dropping courses or resigning from the University without receiving a failing grade
Friday	14	Final date to submit dissertation for August 2006 commencement; Student health documents due to Student Health Office for Fall 2006 enrollment
Thursday	20	Classes end
Friday	21	Reading Day (no classes, no exams)
Monday	24	Final examination period begins
Tuesday	25	Final examination period ends
Wednesday	26	All grades due
Thursday	27	Semester ends

**ADMISSIONS**

**APPLICATION PROCESS**

LSUHSC School of Nursing uses an application procedure managed by the applicant. This procedure significantly lessens the possibility of late or misplaced documents and places control over the process with the applicant. The applicant submits the application form and all official transcripts unopened as received from the Office of the Registrar at each of the colleges and universities attended. Official transcripts must be submitted from each school where the credits were earned in envelopes, which are sealed and signed by the Registrar. Because it may take up to 4 weeks to request and receive the transcripts, which must be submitted by the student with the remaining application materials, the applicant should plan the application period allowing sufficient time to meet the deadlines. Self-managed application kits are available from the Office of Student Affairs and Records (504) 568-4197. Application forms are also available online at the School of Nursing Website.

**TYPES OF ADMISSION**

Unconditional admission is normally granted to applicants who meet all requirements for admission to the program. Applicants who fail to meet all qualifications but who are judged by the faculty to show promise for successful graduate work may be granted probationary admission on the merits of their individual cases. Provisional admission is granted to applicants who are unable, for good reason, to supply the required credentials prior to the stated deadline. In such cases the credentials must be received not later than 30 days after the first day of class (includes Summer Session). Special Student Status is granted to applicants who desire to enroll in graduate courses but have not been admitted into a program of study. Special Students may not enroll in more than 6 hours.

**ACCEPTANCE DEPOSIT**

Applicants who have been notified of acceptance for admission are expected to submit a deposit of \$50 within 21 days of notification. This deposit indicates the desire of the applicant to accept the place offered and serves as confirmation that the place will be available as specified. This deposit is credited toward payment of fees, which are due at the time of registration. Failure to make the required deposit within the specified period may be considered as reason to void acceptance of the application. The acceptance deposit is only refundable if the student is unable to complete registration for reasons beyond the student's control.

**FOREIGN STUDENTS**

Applicants whose native language is not English are required to document proficiency in English by submitting scores earned on the Test of English as a Foreign Language (TOEFL). A student wishing to take the test should write directly to TOEFL, Educational Testing Service, Princeton, N.J. 08540.

Applicants must be competent in English comprehension and be able to participate in class discussions for acceptance into a nursing program.



## REGISTRATION

All students are expected to comply with the general Health Sciences Center provisions governing registration as specified in the general information section of this publication.

Students who have been accepted into the School of Nursing may register for courses in the curriculum. Registration dates are printed in the calendar of the School of Nursing section of the catalog/bulletin.

Registration before or after the final date published must be by permission of the Dean or the Associate Dean. A student may add courses for credit, make section changes, or drop courses with approval of the Dean or the Associate Dean within the periods provided.

A student registered at any campus of the LSU System may not receive credit in the LSU System for work taken concurrently at another college or university without prior written approval of the Admissions, Progression and Graduation Committee, Associate Dean or the Dean. Requests should be submitted to the Admissions, Progression, and Graduation Committee in time to allow for a regularly scheduled meeting. Students are encouraged to take supporting courses offered at the Health Sciences Center.

## ACADEMIC ADVISEMENT

Each student will be assigned a faculty advisor upon entering the School of Nursing. The faculty advisor will assist in selecting the proper courses to achieve a well-balanced program and will monitor the student's progression. A student should feel free to call upon the advisor for assistance at any time. It is mandatory that students make an advising appointment with their advisors each semester prior to pre-registration.

## STUDENT RESPONSIBILITY

Students are expected to be fully acquainted with the organization and regulations of the School of Nursing and Health Sciences Center. Failure of the student to do so may lead to complications for which the student must assume full responsibility.

## HEALTH REQUIREMENTS

Prior to registration in the School of Nursing, all students must send a completed Medical History and Physical Examination form to

LSU Health Sciences Center  
Student Health Service  
2020 Gravier Street  
Box E5-3  
New Orleans, LA. 70112-2234  
(504) 412-1503

Thereafter, periodic health evaluations are required for continued progression in the clinical nursing courses. Please consult the Student Handbook and posted notices for dates each semester.

## RETURN TO SCHOOL POLICY

It is the policy of the School that students are expected to seek treatment and to continue recommended follow-up supervision for acute and/or chronic health conditions.

Students, who have repeatedly missed classes or clinical experiences, received a grade of zero for a day(s) of clinical, demonstrated unprofessional or unsafe behavior or behavior, which may cause harm to themselves or others, may be required, by written referral from nursing faculty or administration, to undergo formal evaluation and/or treatment. It is a policy that students must comply with a written formal referral. In the instance of formal written referral for hospitalization for any reason, students are required to provide a release, written and signed by the treating specialist, giving permission to return to class and/or direct nursing care clinical experiences, as appropriate. The written release is to be directed to the Health Sciences Center Student Health Services and should indicate fitness to "return-to-duty" and any recommendations for class or clinical experience limitations as well as continuing treatment recommendations. See the Student Handbook for the procedure supporting this policy.

## LEAVE OF ABSENCE

Students requesting a leave of absence must obtain all the necessary approvals from the School of Nursing including the signature of the Dean, and file the required forms with the Office of the Registrar before leave can be finalized.

## RESIGNATION / WITHDRAWAL

A student who wishes to resign from the Health Sciences Center must present the resignation in writing giving the reason. The student is responsible for completing the proper procedure for resignation/withdrawal with the Office of Student Records and Student Affairs of the School of Nursing and the Registrar's Office of the Health Sciences Center by the specified deadline. A student who resigns, withdraws from a course(s) or is dropped from a course(s) receives a grade according to the policy stated under the applicable section, Undergraduate or Graduate Scholastic Requirements - Grading Policy. An exit interview with the Associate Dean or the Dean is required.

## CERTIFICATION IN CARDIOPULMONARY RESUSCITATION

All students are required to maintain current certification in basic life support cardiopulmonary resuscitation. They must present appropriate documentation each semester at orientation and validate the appropriate course with the program. Courses under the direction of the American Heart Association are offered at the School, which will complete this requirement. The faculty strongly recommends that students also maintain current certification in basic first aid.



Tuition Opportunity Programs For Students - Available to graduating high school students with a 2.5 GPA and a minimum ACT score of 20. Students must have taken a TOPS core curriculum.

The Air Force, Army, And Navy ROTC Nursing Programs - A comprehensive program of studies through which a student can qualify to be commissioned as an officer in the United States Air Force, Army or Navy, the National Guard or the Reserve is available to students in the baccalaureate program. These scholarship programs provide a variety of funding support: tuition, fees, textbooks, and subsistence. Admission is conditional on meeting academic, physical and age requirements as well as approval from the branch of service selected. Physical training is an integral part of the ROTC Program. For further information about the Army, Air Force or Navy ROTC Programs offered to LSUHSC School of Nursing students, contact the appropriate ROTC office-Air Force (504) 865-5394; Army (504) 865-5594; Navy (504) 865-5104.

## STUDENT AID

A summary of all provisions governing financial aid available to students of the Health Sciences Center may be found elsewhere in this publication under the heading "TYPES OF STUDENT FINANCIAL AID AVAILABLE." The LSU Health Sciences Center provides financial aid counseling and processing services. Contact the LSUHSC Office of Financial Aid (504) 568-4820 for questions.

## SCHOLARSHIPS

Numerous sources of scholarship funds are available for eligible candidates. Some require enrollment for a period of time. The Office of Student Affairs and Office of Financial Aid provide written information and contact sources. Inquiry should be directed to these offices so that the student may then proceed to complete the process.

Jo Ellen Smith Scholarship – The Jo Ellen Smith Foundation awards scholarships on a competitive basis. Students must complete a formal application for scholarship funds. Applications forms are available in the Office of the Assistant Dean for Alumni Services

The Suzanne Theriot Scholarship Fund - Friends and family of the late Suzanne Theriot have made contributions to the LSUHSC Foundation to establish a scholarship in her memory. The amount of the annual award will not exceed the yearly earnings of the Fund. This scholarship will be awarded to a baccalaureate nursing student who exhibits high scholastic potential and who is in need of financial assistance as funds become available.

The T.H. Harris Scholarship - Available to full time students who earn a minimum 3.0 cumulative GPA and had a scholarship award on a previous campus, for the two semesters of the Freshman year. Students who earn a minimum GPA of 3.0 every semester thereafter may continue the scholarship, for a total of four years, as long as they maintain full time status.

The LSUHSC Nursing Alumni Scholarship - Awarded to a final year nursing student with a minimum 3.0 cumulative GPA and based on financial need.

Arda W. Northup, R.N. Memorial Scholarship - Provides scholarship assistance to an entering nursing student who has financial need as funds become available.

## STANDARDS

### TECHNICAL STANDARDS

Nursing education requires that the accumulation of knowledge be accompanied by the acquisition of skills, professional attitudes, and behavior so that the graduate may assume specific role responsibilities in a safe and competent manner. LSUHSC - NO School of Nursing provides graduates with a broad and basic preparation for professional nursing practice.

The LSUHSC – NO School of Nursing complies with the Americans with Disabilities Act and has determined that certain technical standards must be met by prospective candidates and students. Reasonable accommodation will be made for otherwise qualified persons with disabilities. All individuals must be able to perform independently; therefore, an applicant to the program must possess and be able to demonstrate the skills, attributes, and qualities set forth below, without unreasonable dependence on technology or intermediaries.

### Observational Ability

Observation necessitates the use of the sense of vision and other sensory modalities. The student must have visual acuity and perception to make accurate observations, both close at hand and at a distance. The student is expected to be able to observe the patient holistically to accurately assess the presence of any illness or an alteration of health.

To provide quality nursing care, the student is expected to possess functional use of the senses of vision, touch, hearing, taste, and smell. All data received by the senses must be integrated, analyzed, and synthesized in a consistent and accurate manner. Examples of this include, but are not limited to, the abilities to measure intake and output accurately; work with multiple tubes, drains, and monitoring equipment; visually assess patients and machines, including color recognition; make fine discriminations in sound and be able to hear alarms, emergency signals, patient requests, or cries for help; and assess by palpitation, auscultation, and percussion. In addition, the student is expected to possess the ability to perceive pain, pressure, temperature, position, equilibrium, and movement.

## Communication

The student is expected to be able to effectively communicate and receive communication, both verbally, and non-verbally.

This requires the ability to see, speak, hear, read, write, and effectively utilize the English language. A student must be able to relate to others regardless of social, emotional, cultural, and intellectual backgrounds. A student must elicit information, describe changes in mood, activity, and posture, and perceive nonverbal communications. A student must be able to communicate effectively, therapeutically, and sensitively with patients. The student must be able to communicate effectively and efficiently in oral and written form with all members of the health care team. Examples of this include, but are not limited to, the ability to explain treatment procedures, initiate health teaching, document and interpret nursing actions and patient responses, and maintain composure when discussing a serious situation.

## Motor Function and Coordination

The student is expected to have the psychomotor skills necessary to perform or assist with procedures, treatments, administration of medications, and emergency interventions. The student is expected to be able to perform gross and fine motor movements required to provide holistic nursing care. The student is expected to maintain consciousness and equilibrium, have the physical strength and stamina to perform satisfactorily in clinical nursing experiences and have the functional use of the sense of touch, hearing, and vision. Examples of care that the student must be able to perform include, but are not limited to, turning, transferring, transporting, exercising the patients, administering CPR, administering medication, applying pressure to stop bleeding, suctioning of obstructed airways, and performing physical examinations, performing clean and sterile procedures, specimen collection, and venipuncture. All students must be able to sit, walk, stand, and maneuver in small spaces. Assessments may also require the student to bend, squat, reach, kneel, or balance. The student must be able to tolerate physically taxing workloads.

## Behavioral and Social Attributes

The student is expected to have the emotional stability, maturity, and self-discipline to fully utilize his/her intellectual abilities, exercise sound judgment, complete assessment, and intervention activities, and develop sensitive interpersonal relationships with patients, families, and others responsible for health care. The student is expected to have the flexibility to function effectively under stress and to competently function in the face of uncertainties inherent in the clinical setting. Compassion, integrity, honesty, accountability, altruism, autonomy, and motivation are necessary personal qualities.

## Intellectual-Conceptual Ability

The student must possess critical thinking sufficient for sound clinical judgment, develop problem-solving skills, and demonstrate the ability to establish care plans and priorities. The student must possess cognitive skills and learning abilities to acquire, assimilate, integrate, and apply information. This includes, but is not limited to, the ability to identify cause-effect relationships in clinical situations; apply the nursing process; read and comprehend health care information; learn materials presented in class and apply it to patient care; measure, calculate, analyze, and categorize;

apply data based on conclusions arrived at through critical thinking; synthesize objective as well as subjective data; and make decisions that reflect consistent and thoughtful deliberation of the appropriate data.

## E-mail and Computer Literacy

The principal method of Communication in the Health Science Center is by e-mail. All students are expected to obtain an LSUHSC computer account upon admission to the School of Nursing and to check their LSUHSC e-mail frequently for school-related communications. Students are responsible for accessing information in a timely manner.

Students must be computer literate and be able to perform basic computer, software, editing, internet, and browsing skills, such as the following.

- Locating, opening and closing files
- Using a word processor to create, edit and save documents
- Cutting, copying, and pasting text from one document to another
- Toggling between two applications
- Uploading and downloading files
- Finding and using the Internet Explorer browser on our computer
- Configuring your browser to send e-mail
- Locating web sites when using a www address (URL)
- Searching the internet for specific topics

Each student must continue to meet all of the TECHNICAL STANDARDS set forth above. A student may be denied permission to continue in the education program at the School of Nursing should the student fail at any time to demonstrate all of the required TECHNICAL STANDARDS

# STUDENT CONDUCT

## CODE OF STUDENT CONDUCT

All nursing students are expected to abide by the Code of Student Conduct, which delineates professional standards for behavior. The Code was developed by students and faculty. Each student is required to sign the Student Honor Statement upon admission to the School of Nursing and to be familiar with its contents. The Code in its entirety can be found on the School of Nursing Homepage under the section on Student Information.

## POLICY ON CHEATING AND PLAGIARISM

Any student who is determined by a faculty member to be cheating or plagiarizing, either on examination or assignments, will have the paper confiscated and given a "zero grade." The incident will be documented by the faculty member. Any student caught cheating or plagiarizing a second time may be dismissed from the program.

The Health Sciences Center has the capability to perform a computerized item analysis on any written examination. This computer program analyzes each student's answer to each test item in relation to every other student's response to the

same item. The School reserves the right to utilize the computer program, on a random basis, on examinations administered to students enrolled in the School of Nursing.

## GRADUATION

### AWARDS

The Chancellor's Award - Presented annually at the Spring Commencement to a graduating baccalaureate nursing student who has demonstrated scholastic and leadership

ability and exemplifies an enthusiastic commitment to professional nursing.

The Dean's Award - Presented annually at the Fall Commencement to a graduating baccalaureate nursing student who has demonstrated scholastic and leadership ability and exemplifies an enthusiastic commitment to professional nursing.

Valedictorian - Presented to a baccalaureate graduating student with the highest cumulative grade point average at Fall and Spring Commencement.

Salutatorian - Presented to a baccalaureate graduating student with the second highest cumulative grade point average at Fall and Spring Commencement.

LSUHSC School of Nursing Alumni Association Recognition of Class Spirit Award - Presented at Fall and Spring Commencement to a baccalaureate graduating student whose efforts and ability to carry through were always in the best interest of the class, and whose specific performance demonstrated accountability, maturity and peer support.

The Elsevier Sciences, Inc. Faculty Recognition Award - Presented to both an undergraduate and graduate student selected by the faculty on the basis of leadership ability and visibility in the school.

Dolores H. Scheerle Memorial Entrepreneurial Award - Presented to both an undergraduate and graduate student who evidences leadership qualities necessary of an entrepreneur, is innovative in the approach to nursing, and is cognizant of trends and issues relevant to the nursing profession. Presented at each Spring and Fall Commencement.

Jo Ellen Smith Memorial Award - Presented at Spring and Fall Commencement to a baccalaureate graduating student who is recognized as humanitarian, has given service above and beyond what is required by the School, demonstrated concern for and has provided actual service to others.

Ted Kokoska Memorial Award - Presented at the Spring Commencement to a baccalaureate graduating student who is academically in the top third of the graduating class and demonstrates evidence of critical thinking and good judgment, is supportive to the school through active participation in school committees, and who demonstrates a caring attitude and nurturing towards fellow students.

Dr. David E. Jarman Memorial Award - Presented at the Spring Commencement to a baccalaureate graduating student who has contributed maturity and wisdom to the graduating class, has been most supportive to individual class members, and has had primary parenting responsibilities throughout the nursing program.

Patricia A. Losee Memorial Award - Presented at the Spring Commencement to a baccalaureate graduating student who

demonstrates professionalism, conscientiousness, compassion, and a commitment to nursing.

Mary Lou Steedley Memorial Community Health Nursing Award - Presented to a baccalaureate graduating student at the Fall and Spring Commencement and based on clinical excellence in community health nursing, concern for humanity with demonstration of professional growth and leadership in the community, and active involvement in professional and community organizations.

Mary Y. Tunis-Stern Community Activism Award - Presented to a baccalaureate graduating student at the Fall and Spring Commencement to an individual who generates real and innovative change, mobilizes new community projects, applies theoretical concepts to nursing practice in the actual community, establishes programming for vulnerable populations within the community, demonstrates a personal commitment to a community project and has given evidence of political involvement.

Distinguished Graduate Award - Presented by Epsilon Nu Chapter of Sigma Theta Tau International Honor Society for Nursing at Fall and Spring Commencement to a baccalaureate graduating student. The recipient is a member of the Epsilon Nu Chapter who demonstrates creativity and enthusiasm in nursing research, demonstrates commitment to the ideals of the nursing profession, and participates in extracurricular activities.

Student Nurses Association Outstanding Graduate Award - Presented to a baccalaureate graduating student at Fall and Spring Commencement whose outstanding accomplishments are demonstrated by leadership and participation in the nursing profession, curriculum and school.

Student Government Association Outstanding Graduate Award - Presented to a baccalaureate graduating student at Fall and Spring Commencement who meets selected academic standards, participates in community and school activities throughout the nursing curriculum, and exhibits motivation for his/her personal professional growth.

Nurses Christian Fellowship Outstanding Senior Award - Presented to a baccalaureate graduating student at Fall and Spring Commencement who has willingly served the Nurse Christian Fellowship organization, exemplifies the tenets upheld by the organization, and has a giving spirit as evidenced through community service.

F.A. Davis Award for Writing Excellence - Presented to a graduating graduate student with exceptional writing style and skill. Award is given at each Fall and Spring Commencement.

Joyce Travelbee Award - Presented to a Masters candidate at the Fall Commencement based on academic achievement and excellence in nursing practice evidenced through the application of a nursing framework-based practice, demonstrated evidence of a philosophy of nursing, and good interpersonal skills.

Outstanding Doctoral Award - Presented to a doctoral candidate at the Fall and Spring Commencement based on scholastic achievement and distinguished doctoral work.

Outstanding Nurse Practitioner Award - Presented to a Masters candidate at the Spring Commencement who has demonstrated clinical expertise, community service, and has achieved academic excellence among the nurse practitioner graduating class.

Graduate Caring Award - Presented at each Fall and Spring Commencement to a graduate who encompasses the guiding principles of respect, integrity, professionalism, caring,

excellence, and diversity, which are evident in all personal and professional behaviors.

New Orleans District Nurses Association Student Leadership Award – Presented to an undergraduate each fall and spring who demonstrates academic achievement; member of the Student Nurses' Association; outstanding leadership ability in professional and community service.

LA Association of Nurse Anesthetist Outstanding Graduate Award - This award is presented at each Spring Commencement and recognizes a nurse anesthesia graduate demonstrates outstanding performance in academics, clinical ability, and leadership skills.

Nurse Anesthesia Program Director's Award – This award recognizes a nurse anesthesia graduate with outstanding performance in academics and the potential for leadership in the field of nurse anesthesia education. The award is presented at each Spring Commencement.

Abbott Pharmaceuticals, Inc. Nurse Anesthesia Award - Presented to an outstanding nurse anesthesia graduate at each Spring Commencement for their spirit of caring as recognized by peers.

Nurse Anesthesia Program Clinical Excellence Award – This award is given each spring to recognize a graduate's excellence in clinical performance and the potential for continued service to the citizens of Louisiana.

Nurse Anesthesia Outstanding Graduate Award – Each spring this award recognizes the graduate's contributions to the scholarly body of knowledge in nurse anesthesia, excellence in clinical and leadership abilities, and the potential for continued service to the citizens of Louisiana.



## OTHER INFORMATION

### POLICY REGARDING COMPLIANCE WITH AMERICAN DISABILITIES ACT STANDARD

It is the policy of the School of Nursing to adhere to standards of the Americans with Disabilities Act (Public Law #93-112, S504 as amended in 1997). Any student who will need special accommodations to complete a course, must submit written documentation outlining the accommodations required at least 5 days prior to the beginning of that course for each semester. Students meet with the Assistant Dean for Student Services or the Dean to process the documentation of disability, complete the petition for accommodation and file an individual education plan. This plan is reviewed each semester by the student and the Assistant Dean for Student

Services or the Dean. If the student has a problem after or during the semester, the student should see the Assistant Dean for Student Services or the Dean so that an accommodation may be submitted to faculty in a timely manner. See the Student Handbook for the procedures established to support this policy.

## HIPAA POLICY

All those in healthcare must now comply with the federal regulations of The Administration Simplification Subtitle of the Health Insurance Portability & Accountability Act of 1996 (HIPAA). This Act requires that individually identifiable patient information be disclosed on a need to know basis only. Care must be taken to minimize incidental disclosures & must disclose only minimal amounts of information necessary to accomplish the task. The minimum disclosure standard, however, does not apply to requests for information by a healthcare provider for treatment purposes. For example, if one must administer a medication, you will have full access to the medical record. This is covered by the patient's consent for treatment.

In order to protect patient/client privacy, all personally identifying information must be removed from student papers, such as care plans & case studies. Information to be removed includes the individual's name, initials, address, phone number, fax number, & social security number. Student papers may not be copied for careless circulation & handling. These written documents containing private health information must be either carefully stored or shredded to prevent the circulation of confidential patient information. Confidentiality & privacy also extends to oral communications which extend beyond the need to know for treatment &/or educational purposes.

Clinical agencies are also mandated to follow HIPAA regulations. Students will therefore be required to meet any & all of the clinical agency's requirements as part of the clinical affiliation.

HIPAA is a Federal law. Penalties for wrongful disclosure range from fines &/or imprisonment.

## OFFICE OF NURSING RESEARCH AND EVALUATION

The School of Nursing mission integrates the conduct and dissemination of nursing research as an essential component of the academic role. The mission of the Office of Nursing Research and Evaluation is two-fold, to facilitate and promote the development of nursing research programs and scholarly activities within the School of Nursing and to promote continuous quality improvement within the School of Nursing through a systematic evaluation process. The mission and goals of the Office of Nursing Research and Evaluation will be achieved through six primary functions.

- Administration of research and evaluation projects
- Leadership in the conduct and dissemination of nursing research
- Research consultation
- Faculty development
- Program evaluation
- Coordination or provision of support services

## PUBLICATIONS FOR STUDENTS

The LSU Nurses' Notes, edited by School of Nursing students, is published during the school year. Various informational handbooks and newsletters are available to students apprising them of University and School policies and specific requirements for the program of study. Handbooks include Graduate Nursing Student Information, Student Handbook and Nursing Multimedia Center Student Handbook, Code of Student Conduct. All of these documents can be accessed on the School of Nursing server, <http://nursing.lsuohsc.edu/>.

The LSU Health Sciences Center Yearbook, "The Murmur," has a section, which features the School of Nursing students and activities. The yearbook staff includes a School of Nursing student who assists with editing the section related to nursing students.



## PROGRAM DESCRIPTIONS

### UNDERGRADUATE PROGRAMS

#### BACHELOR OF SCIENCE IN NURSING DEGREE – B.S.N.

The faculty of the Louisiana State University Health Sciences Center offers a four-year program of study leading to a Bachelor of Science in Nursing degree. (See Curriculum Plan Section) This program of study is fully accredited by the Commission on Collegiate Nursing Education and is approved by the Louisiana State Board of Nursing. Upon graduation, a student is eligible to write NCLEX the examination for licensure for a registered nurse (R.N.).

A student may attend any accredited college or university to fulfill the required pre-nursing courses. During the time the student is enrolled in the pre-nursing courses, a separate application for admission must be submitted to the Office of Student Records. (See Section on for Admission Process.)

#### CURRICULUM

A conceptual framework has been established by the faculty for the development of the curriculum. This framework provides a wellness model, which has its central focus on the holism of the person through the major concepts of adaptation, growth and development, communication, teaching/learning, critical thinking, and change. These concepts form the matrix for the curriculum with emphasis on the nursing process. Consistent with changing health needs and care of society, this nursing curriculum reflects the trend in professional nursing education to meet societal needs.

The curriculum maintains a balance between general educational and psychosocial courses. Biological and psychosocial sciences, together with the humanities and related professional courses in health science and nursing, provide the foundation for the professional major. These courses are designed to increase the student's understanding of human relations; provide for cultural development; stimulate new interests; and to increase knowledge of the scientific principles underlying professional nursing.

#### PURPOSE

The purpose of the Bachelor of Science in Nursing program of study is to prepare a competent nurse-generalist in the practice of professional nursing. The curriculum offers educational opportunities for the student to develop as a professional person by providing an environment, which will aid in the development of self-discipline, intellectual curiosity, and critical thinking. Professional education prepares the learner to assume the responsibilities of an educated person, stimulates the desire for continued learning, and provides a foundation for graduate study.

## CURRICULUM OBJECTIVES

1. Incorporates a personal and professional philosophy of nursing with holistic man as the central focus
2. Integrates knowledge from the biological, psychosocial sciences and humanities in the development of self and the practice of professional nursing.
3. Integrates knowledge, behaviors, and skills related to the cognitive, affective, and psychomotor domains in substantiating scientific nursing practice.
4. Generates the nursing process, incorporating teaching/learning strategies, in assisting individuals, families, groups, and communities to attain high-level wellness.
5. Integrates theories, principles, and techniques of communication in all aspects of nursing practice
6. Integrates information to improve and enhance client care outcome.
7. Collaborates with health professionals and consumers to achieve high-level wellness for individuals, families, groups and communities
8. Assumes accountability for one's own professional nursing practice
9. Incorporates professional, historical, legal, and ethical perspectives into all aspects of nursing
10. Functions as a change agent in response to political, socio-economical and professional trends to improve the delivery of health care
11. Utilizes leadership ability as a nurse in professional settings and as a citizen in society
12. Uses analytical thinking in the practice of nursing
13. Applies research to improve nursing care and to strengthen the scientific basis of nursing
14. Utilizes opportunities to expand knowledge for continual personal development and professional competence



## ACADEMIC AND ADMISSIONS COUNSELING

Academic and admissions counseling is encouraged prior to submitting an application. A faculty member and a staff member are assigned to the University of New Orleans and Louisiana State University, Baton Rouge for this purpose. If neither person is available or the student is not enrolled at either of those institutions, contact the Louisiana State University Health Sciences Center School of Nursing Office of Student Records (504) 568-4197. A faculty member assigned for admissions counseling will respond in a timely manner.

## ADMISSIONS

### ADMISSION PROCESS

Admission to the School of Nursing is open to all persons who meet the admission requirements and qualifications. Refer to the Admissions Section of the Bachelor of Science in Nursing Degree Programs for specific admission criteria.

First year students who plan to enter the undergraduate nursing curriculum may complete foundational courses in any accredited college or university. Students apply for admission to the nursing program while completing or after successfully completing the required pre-nursing college courses for the bachelor of science in nursing degree program of study.

Students desiring admission should submit transcripts of all previous college work completed at the time the application is submitted. Those enrolled in college at the time applications are submitted should have transcripts sent when they apply for admission, to be followed by a supplementary transcript at the close of the semester.

The deadlines for postmark of applications are February 15 for Fall Semester admission and September 1 for Spring Semester admission. Students are admitted twice yearly, in January and August.

### GENERAL ADMISSION REQUIREMENTS

Members of the Admissions Progression and Graduation Committee admit two classes each year, one in the Fall and one in the Spring.

1. Admission to the baccalaureate program of study is by competitive application.
2. An applicant must have a minimum cumulative grade point average (GPA) of 2.8 (4.0) scale on all college work taken prior to admission to the program. GPAs are calculated on the basis of prerequisite courses taken, including those repeated.
3. A grade of C or better must be achieved in all prerequisite courses. If a student receives a D or F in a prerequisite course, it may be repeated one (1) time only. Failure of any prerequisite course twice makes an applicant ineligible for admission.
4. Preference will be given to an applicant who completes prerequisites in the LSU System.

5. An applicant must complete 35 of required prerequisite courses, or be enrolled in the final semester of prerequisite courses before admitted to the program.
6. Meeting the minimum academic requirements DOES NOT guarantee admission to the School of Nursing.
7. A standardized entrance exam is required for admission to the BSN Program of Nursing. The exam will be administered in the School of Nursing. Information on test dates, times, and method of payment will be posed on the School of Nursing web page and will also be mailed with application information if requested. The test must be completed as part of the admissions process. Applications of those who have not completed the test will not be accepted. For further information, contact the Office of Student Records at 568-4197.

## PROCEDURE FOR APPLICATION

Self-Managed Application Process - LSUHSC School of Nursing uses a self-managed application process.

Procedure for applying for admission to the Bachelor of Science in Nursing program of study is as follows.

1. An application packet can be obtained by contacting the Louisiana State University Health Sciences Center School of Nursing Office of Student Records.
2. Deadlines for postmark of a completed application packet are February 15 if applying for the Fall Semester and September 1, if applying for Spring Semester.
3. The members of the Admissions, Progression, and Graduation Committee will review only completed application packets received or post marked by the deadline date. This packet must include all of the following.
  - a. Completed application form
  - b. Required application fee (\$50.00)
  - c. Official transcripts from each and every college or university attended.
4. Following review of application data by the members of the Admissions Progression and Graduation Committee, a personal interview will be scheduled for the applicant with a faculty member.
5. Notification of action taken by members of the Admissions Progression and Graduation Committee will be sent in writing to all applicants no later than mid-May for the Fall Semester admission or mid-November for the Spring Semester admission.
6. An applicant who wishes to transfer an application to a subsequent semester may do so one time only, and must notify a staff member from the Office of Student Records in writing prior to that semester's application deadline. Thereafter, the applicant must complete a new application packet and submit another application fee.
7. An applicant who is notified of acceptance must contact the Office of Student Records upon receipt of the letter. If for any reason the applicant wishes to withdraw the application from the acceptance list, the Office of Student Records must be notified. Failure to notify the Office of Student Records of the need to withdraw the application could jeopardize future attempts to apply for admission.

## SCREENING FOR ADMISSION

A student who requests admission to the Bachelor of Science in Nursing program of study is classified for screening in one of the following ways.

1. Basic Generic Student (No previous formal course work in a nursing program leading to the licensing examination to become a registered nurse, (R.N.)
2. Transfer Nursing Student (Previous work complete in another baccalaureate nursing program)
3. Advanced Placement Student (Advanced placement requested in either nursing or non-nursing courses).
4. A criminal background check and urine drug screen is required of all student accepted into the School of Nursing. These assessments are required by the Louisiana State Board of Nursing, which regulates the practice of nursing in Louisiana, and by the clinical agencies where students provide patient care. The purpose of obtaining this information is to protect the public. Students are responsible for paying for this assessment.

The information obtained by the criminal background check and urine drug screen is reviewed by the Louisiana State Board of Nursing. Depending on the result of the screening, the Board of Nursing determines if the student can be allowed to enter their first clinical nursing course or if specific conditions are necessary for progression in the curriculum.

5. R.N. Students (see general admission requirements) In addition, the RN applicant must have a
  - a. Current unencumbered, unrestricted Louisiana R.N. license
  - b. Diploma in Nursing or Associate Degree in Nursing from a nationally accredited School of Nursing.
6. Special Student (A registered nurse may enroll in the Health Sciences Center prior to being admitted to the baccalaureate program of study.) This status allows the R.N. with a cumulative GPA of 2.5 to take up to 15 hours in non-nursing supporting courses as a Special Student. The R.N. student must attain the same cumulative GPA admission requirement of generic students to become eligible for regular admission into the baccalaureate nursing program of study.



## REGISTRATION

Students in all programs of the School of Nursing are expected to comply fully with the general Health Sciences Center provisions governing registration as specified in the general information section of this publication.

## WITHDRAWAL, LEAVE OF ABSENCE, AND RE-ENTRY

A student who withdraws from a course(s) for either academic or personal reasons may be carried on the records of the School of Nursing and will be designated in one of the following ways.

1. Dropped from the class roster for the course(s)
2. Dropped from the nursing sequence, but approved for continuation in non-nursing courses. A student is required to complete the required form(s) and to have a conference with the academic advisor
3. Approved academic leave of absence
4. Dropped from the University

## Re-Entry into Supporting and Nursing Courses

1. A student who withdraws from a supporting course or nursing course may re-enter that course the next time it is offered pending eligibility of the student and availability of space in the class.
2. A student may register for each nursing or supporting course a maximum of three times. Prior to the third registration in the same course, a student must sit out a regular academic semester (Fall or Spring) before being eligible to continue in the program.
3. A student who has three failures in clinical nursing courses may not continue in the baccalaureate program of study (i.e., if a student fails Adult Health Nursing I twice and Child Health Nursing once, he/she cannot continue. See item #4). This individual is not eligible to take any coursework applicable to the Bachelor of Science in Nursing for a period of three years.
4. A student may apply for readmission after a three-year absence from the Bachelor of Science in Nursing program of study. Because of the specialized nature of the professional curriculum, a student who is readmitted may be required to repeat at least an entire year's work. Each student's record will be individually evaluated by the Admissions Progression and Graduation Committee.

## Procedure for Re-Admission

Any student who withdraws must re-enter the nursing sequence within the next two (2) semesters in which the course is offered, provided a class vacancy exists. Any other student who wishes to re-enter must file a new application for admission. (See heading on Scholastic Probation.)

An application for re-entry must be filed when a student is eligible to return to the nursing sequence. The student must make an appointment with the Director of Student Records to discuss the re-application process. The deadlines for receipt of application for re-admission are Fall semester, February 15; Spring semester, September 1; and Summer term, April 15.

The re-admission application packet is reviewed by the Admission Progression and Graduation Committee. The committee will review only files, which are complete and include the following.

1. A complete admission application
2. A re-admission application fee of \$50.00
3. An official transcript from each and every college and university attended

Following review, the student will be notified of re-admission status.



## ALTERNATIVES TO FULFILLING CURRICULUM REQUIREMENTS AND ADVANCED PLACEMENT

A student of superior ability and preparation, who has already gained a fundamental knowledge of subjects offered, may be permitted to take advanced standing examinations in specific courses, which, if passed with satisfactory grades, will enable the student to receive degree credit. Credit for advanced standing may be obtained by the College Level Examination Program (CLEP) tests, and/or challenge examinations for a total of 60 credit hours in the Bachelor of Science in Nursing curriculum. This credit cannot be used to reduce the minimum residence requirement. A student may not take an advanced standing examination in a course, which the student has audited, nor in which a grade has been earned.

Credit and/or advanced placement for previous educational and experiential background may be earned in the following ways.

### College Level Examination Program (CLEP)

Students may earn credits through CLEP for a maximum of 36 credit hours. The CLEP Examination for a course must be passed prior to the semester in which a student is scheduled to take the course. Prerequisite requirements must be met for courses in which CLEP credit is earned.

## Credit by Examination

Students may receive advanced standing credit in non-nursing courses according to established School and University guidelines. For further information, contact the Office of Student Records.

### Non-nursing courses

1. Credit may be accepted for courses previously taken whose official course descriptions meet the intent of required courses in the nursing curriculum
2. Results of selected subject examinations in the College Level Examination Program (CLEP) tests are approved for academic credit
3. Challenge examinations are accepted for credit or for waiver of a course requirement.

### Nursing courses

A student who expects to challenge courses for advanced placement must personally contact the faculty member in charge of each course eight weeks prior to the next registration date. Nursing courses must be challenged and completed prior to the time of registration. In order to obtain credit via challenge in any course the student must

1. Be admitted to the LSU System
2. Be in good academic standing
3. Obtain permission from the Dean or the Associate Dean for Academic Programs, the head of the department offering the course and the Dean of the college or school in which the course is taught
4. Submit a fee of \$20 per credit hour for courses with a clinical challenge component and \$10 per credit hour for courses, which do not have a clinical challenge component
5. Obtain approved petition
6. Present the Registrar's permit when reporting for the challenge examination
7. Complete the challenge examination in advance of registration

Students will be held responsible for content in all courses taken in their programs of study regardless of the method by which credit is obtained (transfer, challenge, or waiver).

## Transfer Credit

Students who have attended other colleges or universities are required to furnish a transcript from each school attended. Credits earned five or more years previously are subject to re-evaluation in the light of current course requirements.

Transcripts are evaluated by the Office of Student Records & reviewed by the Admissions, Progression, & Graduation Committee of the School of Nursing. Courses considered for transfer credit from colleges or universities outside of the LSU System must have a grade of C or better.

After students have earned one-half of the credits required for a degree, they may not use additional credits earned in a two-year college outside the LSU System to fulfill degree requirements, unless authorized to do so by the Dean.

## Correspondence Courses

1. Up to one fourth of the total hours required for the degree, with permission, may be earned in correspondence study.
2. Students on probation may not register for correspondence study on a credit basis during the period in which they are ineligible to enroll in the Health Sciences Center.
3. No credit earned through nursing correspondence courses will be accepted toward the degree.
4. Any required course, which includes a laboratory, may not be substituted by a correspondence course.
5. Course descriptions must be submitted to the Office of Student Records
6. A petition for course substitution of correspondence courses from other colleges or universities must be completed and approved by the Admissions, Progression, and Graduation Committee.
7. Students may enroll in only one (1) correspondence course per semester.
8. All correspondence courses must be completed by the end of the semester prior to the semester in which the student will graduate.
9. Correspondence courses, which are prerequisite to another course or level, must be completed before registering in the next course.
10. Students are responsible for seeing that an official transcript of the grade received in the correspondence course is received in the Office of Student Records no later than six (6) weeks after completion of the course.

## POLICY AND PROCEDURE FOR PETITIONS

Students may petition for a change or alteration in curriculum requirements for the following reasons.

1. Substitution of one course for another course where sufficient evidence is present that the course being substituted meets the intent of the required course
2. Alteration in admission, progression or graduation requirements
3. Request for credit by examination

A petition form, with instructions for completion, may be obtained from the Office of Student Records. All petitions must be accurately and fully complete with requested information. All supporting information or documents must accompany the petition.

The completed petition is returned to the Office of Student Records after being reviewed and signed by the student's advisor. The Admissions, Progression, and Graduation Committee will act on the petition, and send a written report to the student. All petitions must be submitted no later than one month prior to registration in order for the action of the Committee to be effective at registration time.

## STUDENT EMPLOYMENT

After admission to the School of Nursing, students may accept employment in a clinical setting only after considering the constraints stipulated by the Louisiana State Board of Nursing and the Louisiana Nurse Practice Act which govern the practice of nursing: (1) "Student nurses may not be employed to carry out those functions inherent in the role of the licensed practitioners of nursing"; (2) Employment must not interfere with a student's achievement in class work and clinical experience. In the event that work assignments do interfere with class work, students will be requested to withdraw until they have sufficient financial resources to continue the educational program.

The status of a student in the School of Nursing is a significant and challenging responsibility and the curriculum is designed to support this assumption. The development of a professional identity in a society where varying levels and types of nursing personnel are employed is a difficult and often frustrating task. For this reason, faculty strongly urge that students refrain from employment in nursing positions during the academic term. After students complete a certain number of hours in the nursing curriculum, they may apply for and receive certification as nursing assistants. Make inquiries to the Assistant Dean for Student Services or the Dean.

## Baccalaureate Scholastic Requirements

The value of each course of instruction and the amount of work required for graduation is stated in terms of semester hours. A credit or semester hour represents one hour of class per week for a semester. In laboratory courses, a semester hour may reflect from two to four hours of laboratory experiences per week for a semester.

## GRADING POLICY

1. The grade of A, B, or C is given for satisfactory work. The grade of C indicates work of a quality acceptable for graduation. The grades of A and B are given for work of a higher degree of excellence. The grade of D is unsatisfactory. The grade of F is given for work failed. The grade of P (Pass) is assigned for satisfactory completion of advanced standing examinations, pass-fail option courses and certain other courses. For purpose of converting letter grades to a numerical expression, the following scale may be used.

A	93-100
B	85-92
C	77-84
D	65-76
F	Failing, below 65

2. A grade of "W" (withdrawal) will be issued to students who enroll in a course and who attend up to 20 percent of actual class time and withdraw without completing more than 20 percent of actual class time.

3. A grade of "F" will be issued to students who attend 80 percent or more of actual class time and withdraw before the completion of the course.

4. A student who receives a grade of less than C in a supporting or nursing course must repeat the course in the LSU System in order to receive credit for it.
5. A clinical grade may be reported as a letter grade or as a Pass/Fail, depending upon the individual course. In nursing courses, which report clinical grades as pass/fail, a minimum grade of "Pass" is required for progression in the curriculum. In nursing courses, which report clinical grades as a letter grade, minimum grade of "77" is required for progression in the curriculum. Students must earn a passing grade in both theory and clinical to receive a passing grade in the course. For example, a student who receives a grade of 77 or greater in theory and a "fail" grade in clinical will receive a D course grade and will have to repeat the course. A student who receives a 77 or greater in theory and a D or F in clinical will receive the clinical grade as the final course grade and will have to repeat the course. A student who receives a passing grade in clinical and a D or F in theory will receive the D or F as the final course grade and will have to repeat the course. Students are allowed to enroll in each nursing and health sciences center course twice. Prior to the third registration in a course, the student must sit out a semester.
6. Work which earns a passing grade but which is not complete, because of circumstances beyond the student's control may be marked "I" (Incomplete). An "I" grade is given only upon receipt by the Dean of an appropriate reason transmitted through the instructor and department head. If an acceptable reason is not received, the instructor is to consider that the delinquent work is of failing quality and an "I" grade is not to be given. It is the responsibility of the student to initiate the request. A grade of "I" will be converted to "F" unless it is removed prior to the deadline for adding courses for credit in the next semester as published in the calendar. The conversion of the "I" grade takes place in the next regular semester in which the student is in residence in The LSU System.
7. Any instructor may present a written statement of unsafe and/or incompetent behavior to the course coordinator after discussion with the student. The course coordinator will then present this information and any recommendations to the appropriate department head for action. This may occur at any time during a semester. Evidence of unsafe and/or incompetent performance of a skill passed in a previous course may halt progression in the curriculum. Any student found to be unsafe or incompetent in clinical performance may be referred for formal evaluation and treatment, be required to repeat the course before progressing in the curriculum, or the student may be permanently dropped from the program.

## ACADEMIC STANDARDS

### Academic Progression

Each major component of a nursing course must be passed with a grade of "C" before the student can progress in the nursing course sequence. In addition, competence in determining dosage and solution of medications is required for safe practice. This component must be passed with the score specified in the course syllabus. For a description of the major component of each course, refer to the course syllabus.

It is the responsibility of the student to follow the program of studies and meet the grade requirements for promotion. As a mechanism for validating student performance and as a part of ongoing educational research, all students are required to complete National League for Nursing Achievement tests.

## Attendance Policy

Students enrolled in the School of Nursing are expected to attend all classes and clinical experiences regularly and punctually. When possible, advance arrangements for unavoidable absences are required to be made with the appropriate faculty member. Neither an absence nor notification of absence relieves the student of the responsibility for meeting all course requirements. Each course will identify the amount of absences compatible with completion of the course objectives. Students who incur absences in excess of those identified in the specific course syllabus will be placed on attendance probation by course faculty. Violations to attendance probation will result in the student being dropped from class rolls. Students who incur absences fewer than those identified as excessive will negotiate how to meet course objectives with the faculty.

Students who are on academic or attendance probation must attend all classes and clinical experiences. Students who violate attendance probation will be dropped from the class roll for the course.

## Standards for Grade Point Averages

The cumulative grade point average (GPA) of a student is determined by the ratio of quality points earned to semester hours attempted. Quality points are assigned to letter grades as follows: A - four quality points; B - three quality points; C - two quality points; D - one quality point; F - no quality points. Grades of P, S, and W, are not used in the computation of the official grade of a student and therefore do not carry quality points. These grades are used to determine the student's academic status.

1. **CUMULATIVE GPA** - At the time of initial enrollment, a cumulative GPA is calculated. This cumulative GPA is based on selected transfer credit from other institutions. After the first semester at LSUHSC School of Nursing, additional credits are calculated to establish a cumulative GPA for each semester of enrollment. A cumulative GPA must remain at 2.0 or above to be in good academic standing. A student with a cumulative GPA below 2.0 will be placed on academic probation and will be allowed one term to raise the GPA.
2. **LSUHSC GPA** – The LSUHSC GPA refers to the GPA earned from all courses taken while in residence at the School of Nursing and includes courses taken while at any other accredited academic institution. A student must maintain an LSUHSC GPA of 2.0 to remain in good academic standing. A LSUHSC GPA below 2.0 places a student on academic probation. Students have one term to raise this GPA.
3. **TERM GPA** – The term GPA refers to the GPA earned from courses completed in the current semester. A student must maintain a 2.0 term GPA to remain in good academic standing. If the term GPA is below 2.0, a student is placed on academic probation and will have one term to raise this GPA.

4. A student earning a term GPA of 3.5 or above will be placed on the Dean's List at the end of the respective Spring or Fall semester.

## Academic Probation

1. A student will remain on academic probation until the student has a cumulative GPA of 2.0 or higher on all college work attempted and on all work attempted at the LSU Health Sciences Center.
2. A student who has been on academic probation will be dropped from the rolls of the School of Nursing at the end of any semester or summer term during which the student fails to earn at least a 2.0 Cumulative, LSUHSC or term GPA.
3. Regardless of a student's cumulative GPA, if the student fails to earn a 2.0 LSUHSC or term GPA in each of two consecutive semesters (or one semester and a summer term) the student will be declared ineligible to continue.
4. A student dropped for the first time for academic reasons may not be considered for readmission until the student has been out of the School of Nursing for one regular semester. The student is then eligible for consideration for readmission.
5. A student dropped the second time for academic reasons must remain out of the School of Nursing for at least one calendar year. The student may then apply for readmission.
6. A student who has been dropped for academic reasons may not obtain credit toward a degree from the LSU Health Sciences Center with credits earned at another institution during the period of the student's ineligibility.
7. See section on Procedure for Re-admission.

## Progression in the Curriculum

1. A minimum grade of C is required in all nursing courses.
2. A minimum grade of C is required in all supporting courses. The supporting courses in the Bachelor of Science in Nursing Program of Study are HLSC 2410, 2412, 2414, 2416, 3409, 3410, 3412 and 3424; PSCH 2009 and 3044; and BIOM 3115.
3. Any supporting or nursing course for which a student receives below a "C" grade must be repeated in the LSU System.

## Statement of Satisfactory Academic Progress

A student is considered to be making satisfactory academic progress if the following criteria are met.

1. Graduation requirements for a full time student can be completed within four (4) years in the Bachelor of Science in Nursing Curriculum of Study after entering the School. Additional time will be allowed for a part time student and will be based upon the percentage of course work in which the student is enrolled. The time granted a student for a leave of absence will not be included in the maximum time period for completion of the program.

2. A cumulative GPA of 2.0 is maintained

Evaluation of progress will be made at the end of each academic year.

## Academic Grievance and Review Procedure

The faculty of the Louisiana State University Health Sciences Center School of Nursing believes in the interactive process between the teacher and the student, which enhances mutual acceptance, awareness, and respect. In such an atmosphere of open expression, faculty members and students are usually able to quickly resolve academic disagreements. However, when mutual exchange is not effective, a mechanism for adjudicating student grievances is available.

The Academic Grievance and Review Procedure affords students, with just cause, the means to initiate an academic grievance against a faculty member and request a formal hearing before an impartial faculty/student panel. The Academic Grievance and Review Procedure also assures students that they will receive a fair grievance hearing within the School of Nursing without fear of retribution. The procedure is explained in detail in the LSUHSC School of Nursing Student Handbook.

## GRADUATION

### Requirements

Students must meet the following graduation requirements.

1. Satisfactory completion of 133 semester hours as specified in the curriculum
2. Fulfillment of the required 60 semester hours of upper division credit designated by 3000-4000 level courses
3. A cumulative GPA of 2.0 or higher (on all college work attempted and all work attempted at the LSU Health Sciences Center) with no grade in pre-nursing, supporting or nursing courses below C
4. In residence for a minimum of 30 semester hours
5. Approval by the Admissions, Progression and Graduation Committee and given recommendation by the faculty of the School of Nursing
6. Attendance at pre-commencement and commencement (unless specifically excused by the Dean)
7. Verification that all materials belonging to the Health Sciences Center and cooperating agencies have been returned through the proper procedures. All indebtedness to the University must be satisfied before a diploma may be issued. These materials would include items such as library books, equipment, keys, furniture or any outstanding, unpaid balances due.

### Procedure for Obtaining Baccalaureate of Science in Nursing Degree

1. A candidate must contact the Director, Office of Student Affairs to have academic records evaluated for compliance with degree requirements. This request should be accomplished at the beginning of the semester

prior to the semester in which the degree is to be awarded. After the degree compliance form has been signed by the Dean (or an authorized representative), it should be presented in the Office of the Registrar. Each candidate must make an application for degree during the final semester in residence, stating the exact name, which, is to appear on the diploma.

2. Each candidate must pay the diploma fee at the final registration. A student who has previously paid a diploma fee, but who did not graduate at the time expected, must pay a duplicate diploma fee.
3. All financial indebtedness to the LSU System must be cleared prior to graduation.

## Degrees with Honors

Bachelor of Science in Nursing degrees are awarded summa cum laude to students whose grade point averages fall within the range of 3.960 to 4.000, magna cum laude to students whose grade point averages fall within the range of 3.860 to 3.959, and cum laude to students whose grade point averages fall within the range of 3.760 to 3.859.

In determining eligibility for degrees awarded summa cum laude, magna cum laude, or cum laude, at least 75 percent of the credits required for graduation in the particular curriculum of the candidate must have been earned in the LSU System. Only credits earned in The LSU System shall be used in calculating qualification.

## OTHER INFORMATION

### Additional Expenses

1. Advanced standing examination fee
2. Uniforms, \$150 (approximate cost)
3. Purchase of a wristwatch with second hand, stethoscope, scissors, penlight, and hemostat
4. Books and school supplies, \$1000 per year (approximate cost)
5. Public transportation is available to most hospitals, health agencies, and the University of New Orleans. Personal transportation is recommended.
6. Computer system that is compatible with the LSUHSC computing equipment.
7. For graduating students, cap and gown fee (\$25.00), diploma fee (\$10.00), and nursing pin (approximately \$110.00).
8. Expenses related to Application for Registered Nurse licensure - Fee for criminal record check (\$50.00), NCLEX fee (\$200.00), Louisiana State fee (\$80.00).

**BACHELOR OF SCIENCE IN NURSING  
CURRICULUM**

**GENERAL EDUCATION COURSES**

**Pre-Nursing Freshman Year \***

	Credits
Arts Elective**	3
College Algebra	3
Economic Principles	3
English Composition	6
General Biology and Laboratory	4
General Chemistry	3
General Psychology	3
Introductory Sociology	3
Microbiology and Laboratory	4
Political Science (American Government)	3
<b>Total</b>	<b>35</b>

**SOPHOMORE YEAR (PLAN A)**

**Fall Admission First Semester (Fall)**

	Credits
PSCH 2009 Human Behavior and Development throughout the Life Cycle	3
HLSC 2410 Human Physiology	4
HLSC 2412 Human Anatomy	4
HLSC 2414 Basic Organic and Biochemistry	4
<b>Total</b>	<b>15</b>

**Second Semester (Spring)**

	Credits
NURS 2351 Foundations of Nursing Practice	6
HLSC 2416 Health Assessment	3
HLSC 3409 Pharmacology	3
HLSC 3424 Basic and Clinical Nutrition	3
<b>Total</b>	<b>15</b>

**Third Semester  
(Summer following Sophomore Year)**

	Credits
NURS 2371 Introduction to Professional Nursing	2
PSCH 3044 Introduction to Abnormal Psychology	3
<b>Total</b>	<b>5</b>

**SOPHOMORE YEAR (PLAN B)**

**Spring Admission First Semester (Spring)**

	Credits
PSCH 2009 Human Behavior and Development throughout the Life Cycle	3
HLSC 2410 Human Physiology	4
HLSC 2412 Human Anatomy	4
HLSC 2414 Basic Organic and Biochemistry	4
<b>Total</b>	<b>15</b>

**Second Semester (Summer)**

	Credits
NURS 2371 Introduction to Professional Nursing	2
PSCH 3044 Introduction to Abnormal Psychology	3
<b>Total</b>	<b>5</b>

**Third Semester (Fall)**

	Credits
NURS 2351 Foundations of Nursing Practice	6
HLSC 2416 Health Assessment	3
HLSC 3409 Pharmacology	3
HLSC 3424 Basic and Clinical Nutrition	3
<b>Total</b>	<b>15</b>

**JUNIOR YEAR (PLANS A & B)**

**First Semester**

	Credits
NURS 3352 Adult Health Nursing I	5
NURS 3356 Mental Health Nursing I	3
HLSC 3410 Pathophysiology	3
English Literature 2000 or above	3
<b>Total</b>	<b>14</b>

**Second Semester**

	Credits
NURS 3355 Child Health Nursing	4
NURS 3357 Community Health Nursing I	3
NURS 3358 Health Care of the Childbearing Family	4
BIOM 3115 Biometry/Statistics	3
Humanities Elective	3
<b>Total</b>	<b>17</b>

\* In preparation for entry into the School of Nursing, general education courses may be taken at any accredited college or university; however, preference will be given to those students who complete 28 of the 38 prerequisite hours in the LSU system. Students should select science courses designed for students in a science curriculum rather than those courses described as survey courses. For example, the desirable chemistry course is Chemistry 1201 rather than Chemistry 1001 and the Biology is Biology for Science Majors 1202 and 1208 at LSU, Baton Rouge. Courses should be selected which are open to all students rather than a course limited to students in nursing. Credit hours for course work taken may be recorded only once as credit toward a Bachelor of Science in Nursing Degree.

\*\* A student may select an arts elective from Arts/Fine Arts, Dance, Drama/Theatre, and Music.

\*\*\* A student may select a humanities elective from Communication, English 2000 or above, Foreign Language, History, Journalism, Philosophy, Religion, and Speech.

**SENIOR YEAR (PLANS A & B)**

**First Semester**

	Credits
NURS 4352 Adult Health Nursing II	4
NURS 4356 Mental Health Nursing II	4
NURS 4370 Research in Nursing	3
HLSC 3412 Management in Formal Organizations	3
Humanities Elective 3000 or 4000 *	3
<b>Total</b>	<b>17</b>

**Second Semester**

	Credits
NURS 4371 Perspectives in Professional Nursing .....	2
NURS 4357 Community Health Nursing II .....	5
NURS 4359 Nursing Management in the Health Care System.....	4
NURS Elective .....	1
<b>Total .....</b>	<b>12</b>

**NURSING ELECTIVES**

	Credits
NRSC 420A Comprehensive Pain Management (Interdisciplinary) Nursing .....	1
NURS 4346 Erotological Nursing .....	1
NURS 4347 Cross-Cultural Nursing .....	1
NURS 4348 Independent Study in Nursing .....	1
NURS 4349 Nursing Care of the Oncology Patient .....	1
NURS 4350 Camp Nursing .....	2
NURS 4351 Nursing Care for the High Risk Neonate.....	1
NURS 4360 The Business of Health Care.....	1
NURS 4361 EKG Interpretation and the Nursing Process .....	1
NURS 4362 The Homeless: A Mental Health Nursing Challenge .....	1
NURS 4363 Perioperative Nursing .....	1
NURS 4364 Principles of Emergency Nursing.....	1
NURS 4365 Outpatient Nursing: Management of the HIV Infected Client.....	1
NURS 4366 Complementary and Alternative the Therapies for Nurses.....	1
NURS 4367 Ethical and Legal Issues in Nursing .....	1
HLSC 4411 Interdisciplinary Care of the Dying Client and Family ** .....	1
NURS 4368 Introduction to Forensic Nursing.....	2
HLSC 4412 Nurse Summer Training Program ** .....	3
HLSC 4413 Technological Innovation in the Health Professions ** .....	1
SW 4070 International Nursing: Comparative Health Delivery System ** .....	1

\*\* This course may substitute for the nursing elective.



**RN TO BSN  
ARTICULATION TRACK**

A program has been designed for registered nurses from diploma or associate degree programs. All RN applicants should contact the Office of Student Records to be assigned to an RN to BSN advisor who will facilitate an individualized academic evaluation, discuss the admission process, and complete the curriculum planning process. Additional information may be found in the General Admission Requirements Section and the Screening for Admission Section of this catalog/bulletin.

RN students receive 37 hours of advanced placement credits. In addition, the RN may earn up to 60 hours of advanced standing credit through College Level Examination Program (CLEP) or challenge testing by Credit by Examination (CBE).

RN-BSN Plan of Study	Credit Hours	Transfer Credits	Independent Study, CLEP or CBE credits *	LSUHSC classes **
<b>Pre-requisite Courses</b>				
English Composition I and II	6	X	X	
General Biology and Lab	4	X	X	
General Chemistry	3	X	X	
Introductory Sociology	3	X	X	
General Psychology	3	X	X	
College Algebra	3	X	X	
Microbiology with/without Lab	3 or 4	X	X	
Social Science Elective (American Gov.)	3	X	X	
Arts Elective	3	X	X	
English Literature Elective (2000 or above)	3	X	X	
Humanities Electives (one 3000 level or above)	6	X	X	

<b>RN-BSN Plan of Study</b>	<b>Credit Hours</b>	<b>Transfer Credits</b>	<b>Independent Study, CLEP or CBE credits*</b>	<b>LSUHSC classes **</b>
<b><u>Support Courses</u></b>				
Psychology 2009: Developmental Psychology	3	X	X	X
HLSC 2410: Human Physiology & Lab	4	X	X	X
HLSC 2412: Human Anatomy & Lab	4	X	X	X
HLSC 2414: Basic Organic / Biochemistry or Chemistry Elective	3 - 4	X	X	X
HLSC 3409: Pharmacology	3	X	X	X
HLSC 3410: RN- Pathophysiology	3	X	X	X
HLSC 3424: Basic Nutrition	3	X	X	X
BIOM 3115: Biometry/Statistics	3	X	X	X
Electives (misc.)	1 - 6	X	X	
<b><u>Nursing Courses**</u></b>				
NURS 3375: Introduction to Professional Nursing Concepts	5	X		X
HLSC 2416: Health Assessment	3	X	X	X
NURS 4370: Research in Nursing	3	X	X	X
NURS 4359: Nursing Management in the Health Care System	4	X		X
NURS 4375: Mental/Community Health Nursing Concepts	5	X		X
NURS 4376: Mental/Community Health Practicum	3	X		X
Nursing Elective	1 - 2	X	X	X

\* Ask the RN Advisor about the maximum amount of credit hours that may be transferred from an accredited college or university, or earned through Independent Study, (CLEP) exam or credit by examination (CBE).

\*\*A minimum of 15 credit hours of nursing courses, part of a minimum of 30 credit hours earned within the LSU System, are necessary to meet the residency requirements for graduation.

## RN to BSN Plan of Study Sample Curriculum Plan

### Plan A

#### Spring

NURS 3375 (5 credit hours)  
HLSC 2416 (3 credit hours)  
HLSC 3410 (3 credit hours)

#### Summer

NURS 4359 (4 credit hours)  
NURS 4370 (3 credit hours)  
NURS Elective (1-2 credit hours)

#### Fall

HLSC 3410 (3 credit hours)  
NURS Elective (1-2 credit hours)

### Plan B

#### Summer

NURS 4370 (3 credit hours)  
NURS Elective (1-2 credit hours)

#### Fall

NURS 3375 (5 credit hours)  
HLSC 2416 (3 credit hours)  
HLSC 3410 (3 credit hours)

#### Spring

NURS 4375 (5 credit hours)  
NURS 4376 (3 credit hours)  
NURS 4359 (4 credit hours)

### Plan C

#### Fall

NURS 3375 (5 credit hours)  
HLSC 2416 (3 credit hours)  
HLSC 3410 (3 credit hours)

#### Spring

NURS 4375 (5 credit hours)  
NURS 4376 (3 credit hours)

#### Summer

NURS 4359 (4 credit hours)  
NURS 4370 (3 credit hours)  
NURS Elective (1-2 credit hours)

## CAREER ALTERNATIVE RN EDUCATION (CARE) TRACK

### Two-Year Plan for Basic Licensure

This accelerated curriculum prepares graduates to earn a degree and complete the RN licensure examination in a two-year frame of study. The program is designed for individuals who have

- Earned a Bachelor's Degree from an accredited college or university within the past 10 years,
- A GPA 3.0 on 4.0 scale, and

Completed all required prerequisites and corequisites.

### BSN Program for students with a degree

Applicants will have to meet the requirements for a baccalaureate degree mandated by the Louisiana Board of Regents and will have to have completed designed courses in the biological sciences (e.g. Anatomy and Physiology).

### Design of Program

The program will be planned as a 2-year program with an annual tuition. Each 12-month period will be comprised of three 16 week blocks (which may be sub-divided into smaller modules) with 4 weeks left for breaks and vacation. Theory and clinical practice will be scheduled for afternoon, evening and weekend hours to provide optimal clinical experiences.

Multiple educational strategies and modalities will be utilized to maximize learning. Mastery of content will be monitored by tests prepared by a national testing service to determine a student's progress in the program and identify areas of remediation to ensure a successful outcome of this program.

Additional information may be found in the General Admission Requirements Section and the Screening for Admission Section of this Catalog/Bulletin.



## CAREER ALTERNATIVE RN EDUCATION (CARE) CURRICULUM

### Prerequisite and Supporting Courses

Must be completed prior to enrolling in nursing coursework

	Credits
English Composition.....	6
Algebra/Statistics .....	6
Natural Sciences*	
Biological Sciences (Biology & Microbiology) .....	8-16
Physical Sciences (Social Science/Behavior Sciences).....	6
(Growth Development, Economics & Management) ..	9
Psychology.....	6
Fine Arts.....	3
Humanities .....	6
English Literature .....	3
<b>TOTAL .....</b>	<b>53-61</b>

\* May include Anatomy (4 hours) and Physiology (4 hours) if taken in prior degree.

Courses must conform to LA Board of Regents requirements for graduation from a Louisiana College or University and provide the foundation that supports the Nursing Curriculum.

### Nursing Courses to Complete for Degree

	Credits
<b>Block I</b>	
HLSC 2410 Natural Science (Anatomy).....	4
HLSC 2412 Natural Science (Physiology) .....	4
HLSC 3409 Pharmacology.....	3
NURS 2371 Introduction to Professional Nursing.....	2
<b>Block II</b>	
HLSC 2416 Health Assessment .....	3
NURS 2351 Foundation of Nursing Practice .....	6
HLSC 3410 Pathophysiology.....	3
<b>Block III</b>	
NURS 3352 Adult Health I Nursing .....	5
NURS 3355 Child Nursing .....	4
NURS 3358 Maternal Nursing .....	4
NURS 4370 Nursing Research.....	3
<b>Block IV</b>	
NURS 3357 Community Health Nursing I .....	3
NURS 3356 Mental Health Nursing I .....	3
NURS 4352 Adult Health Nursing II .....	4
HLSC Elective.....	1
NURS 4371 Perspectives in Professional Nursing.....	2
<b>Block V</b>	
NURS 4357 Community Health Nursing II .....	5
NURS 4356 Mental Health Nursing II .....	4
NURS 4359 Nursing Management .....	4
<b>TOTAL .....</b>	<b>120</b>

## GRADUATE PROGRAMS

### INTRODUCTION

The faculty believe that graduate education degrees in nursing should be based on undergraduate general education and professional knowledge, attitudes and applied skills, which evolve from the concept that the individual is a holistic being. As nursing curricula progress from undergraduate to graduate education, the focus of the scope of practice affords students the opportunity to study, in-depth, knowledge in selected areas of nursing as clinical nurse specialists, administrators, educators, consultants, nurse anesthetists and nurse practitioners; to refine clinical competencies; to develop an advanced clinical practice; and to utilize and conduct research. Graduate programs in nursing have the mission of educating qualified persons to contribute to the improvement of nursing, health care, and education to promote the advancement of the discipline of nursing.

### GENERAL INFORMATION

#### Admission

Admission to graduate programs normally occurs once per year. The deadline for submission of applications for Fall Admission is February 1. Any exception to this admission schedule is directed to the Associate Dean or the Dean. Application forms for admission to degree programs of study leading to a Master of Nursing or Doctor of Nursing Science can be obtained through the LSUHSC website ([www.lsuhs.edu](http://www.lsuhs.edu)) or by contacting the Office of Student Records. Potential applicants are urged to request information well in advance of desired date of admission.

#### Re-Admission and Re-entry

Students who have been accepted for graduate study and who have not maintained continuous registration, i.e. have been absent for one semester or more, must submit an application for re-admission at least one semester prior to the semester in which they wish to reenter. Supplementary transcripts must be submitted for course work taken at another institution during the interim.

#### Financial Assistance

A limited number of stipends are available to graduate students registered for full time study. For information regarding stipend assistance, contact the Associate Dean for Research and Evaluation.

## ACADEMIC STANDARDS

### Student Responsibility for Degree Requirements

In matters concerning courses and curricula, the School of Nursing prescribes certain standards, which are enforced. These may be regarded as minimum requirements. Graduate students are responsible for acquainting themselves with the general regulations and specific requirements, which are applicable to their particular program of study. All students are required to meet with their academic advisors each semester for approval of the semester course plan prior to registration.

### Registration

Students must comply with the general Health Sciences Center provisions governing registration as specified in the general information section of this publication. Continuous registration for each academic semester is required to maintain student status in the graduate nursing program of study.

### Full Time Study

The minimum requirements for full time enrollment in graduate study is nine semester hours during a regular academic semester and six semester hours during a Summer session. Permission to register for more than fifteen credit hours in any one semester may be granted by the Associate Dean or the Dean upon the recommendation of the student's faculty advisor.

### Special Student Status

This admission status is granted to those applicant who apply to the program after the admission deadline or who wish to take courses, limited to 6 SH, without requiring enrollment in the master's/doctoral program. Admission under this status is selective; may be limited depending on program resources; and is granted by the Associate Dean for Professional Services and Community Activities.

Requirements for Special Student Status are as follows.

1. Completed application
2. Transcript indicating graduation from an approved program
3. Two letters of reference; preferably one from a faculty member and one from an employer
4. A current resume that documents at least one year of clinical experience
5. A current unencumbered license to practice nursing in Louisiana
6. Completed health records

## Eligibility to Continue to Register in the Program

Eligibility to continue registration in the graduate degree program of study is dependent upon satisfactory removal of all provisional or probationary conditions imposed at admission, achievement of a 3.0 grade point for each nursing course completed, and maintenance of a 3.0 grade point average for all course work completed while enrolled in the graduate degree program of study. In addition, doctoral students must successfully complete program examinations and all academic requirements.

A grade below B in a graduate course in nursing is considered unsatisfactory performance. The student will be permitted to continue in graduate study until the course has been repeated at the next time it is offered and a grade of B or better has been achieved. A course may be repeated once with the approval of the faculty advisor or major professor and the course instructor.

## Multi-Campus Registration

Graduate students enrolled full-time in the LSU System (LSU Baton Rouge, UNO, LSUHSC) may cross enroll. Students are required to complete the Application for LSU System Multi-Campus Registration form. This form should be completed and submitted to the Office of Student Records during the pre-registration period of each semester. Cross enrollment must be approved by the Associate Dean or the Dean.

## Non-Nursing Electives

Graduate students may register for support courses and non-nursing electives in any institution within the LSU System provided they have been approved by the faculty advisor or major professor. Master's degree students may take one 4000 level course provided the course is listed as a graduate division course. Support courses for doctoral students must be doctoral level courses.

## Thesis and Dissertation Advisement

Students writing theses or dissertations are required to register for advisement before receiving assistance from the committee chairperson or any committee member. After completion of course work, continuous registration in Thesis or Dissertation is required.

## Registration for Degree Candidates

Candidates for degrees are required to register for graduate study during the semester they have been certified to receive a degree.

## Grades Required for Degree

To receive a graduate degree the student must achieve at least 3.0 for each graduate course in nursing and a grade point average of 3.0 for all non-nursing course work taken while registered as a graduate student. Courses included in a student's degree plan may not be taken for a grade of pass or fail.

## Graduate Grading System

The graduate degree program of study employs a letter grade and quality point system where A = 4 quality points, indicates superior work, and is equivalent to 90 - 100 numerical points. A grade of B = 3 quality points, indicates satisfactory work, and is equivalent to 80-89 numerical points. A grade of C is below expected academic performance, yields 2 quality points, and the numerical equivalent is 70-79. A grade of D = 1 quality point is an unsatisfactory grade and represents 60 - 69 numerical points. The grade of F carries no quality points, is an unsatisfactory grade, and numerically represents a score of 59 or less.

There are three interim grades used in the graduate degree program of study. These are "I," "S," and "U." The "I" grade indicates satisfactory performance by the student who, due to unavoidable circumstances, cannot complete course requirements before the close of the semester. The student may obtain permission for the "I" grade by petitioning the course professor, and the Associate Dean or the Dean of the School for extended time to complete the required work. An additional extension of time through a second petition may be filed with faculty permission. A grade of "I" will be converted to an "F" unless it is removed prior to the deadline for adding courses for the next semester as published in the calendar. If removal of the "I" is not finished in a timely manner and reported to the Office of Student Affairs, the "I" grade will automatically be converted to the grade of "F." The student should refer to the academic calendar for dates of deadlines for removal of incomplete grades.

The grade of "S" is awarded for satisfactory work in thesis and dissertation courses. Upon completion of all requirements, the "S" is converted to "P" for the thesis or dissertation. A grade of "U" is awarded for unsatisfactory thesis or dissertation work. Students who earn a "U" have two semesters (one calendar year) to complete the thesis or dissertation.

W is the grade issued to all students who enroll and subsequently withdraw from a course after attending up to 20 percent of actual class time. A grade of F is awarded to any student who attends 80 percent or more of actual class time and who withdraws before completion of the course.

## Residency or Foreign Language Requirements

There are no residency or foreign language requirements for either the master's or doctoral program of study.

## Transfer Credit

Graduate students may petition to transfer credits from other accredited universities for application to LSUHSC degree programs. The maximum transfer allowed is twelve semester hours when studying at the master's level and fifteen semester hours when studying at the doctoral level. Graduate course work may be transferred provided each course.

1. Fulfills the requirements specified in the student's degree plan
2. Was taken while enrolled at a university as a graduate student in good standing
3. Was successfully completed with a grade of "B" or better

4. Was not counted toward another degree or taken through correspondence courses
5. Was completed within the eight year time limit for the degree
6. Was requested only one time. Petitions must be approved by the student's faculty advisor or major professor and the Associate Dean for the perspective program or the Dean

## Time Limit for Degrees

Graduate students have eight years from the first time of registration to complete all conditions for the master's or doctoral degree.

## Limitation on Candidacy for Advanced Degrees in Nursing

Faculty of the School of Nursing holding the rank of Assistant Professor or higher may not earn a graduate degree in nursing at the LSUHSC School of Nursing. Faculty holding the rank of Instructor may register for a maximum of six semester hours per semester in the graduate program.



## MASTER OF NURSING – M.N.

The master's degree program of study is designed to educate qualified persons to contribute to health care and to improve nursing practice. It is based on undergraduate general education and professional knowledge and upon the attitudes and applied skills, which evolve from the concept that individuals are holistic beings. The content includes the theory and practice of nursing; biological, psychological, sociological, philosophical, cultural, and environmental concepts related to health; and the present and future roles of nursing in health care. The curriculum is designed to prepare graduates with advanced knowledge in select areas of nursing and with competencies in advanced practice nursing and research. Purpose

The purpose of the master's degree curriculum is to prepare graduates in areas of advanced practice nursing (clinical nurse specialist, nurse practitioner, nurse anesthetist), nursing administration, and community health nursing as providers and organizers of the health care delivery process or, as nurse educators. The second purpose of the curriculum is to offer graduates a foundation for doctoral study.

## Objectives

Upon completion of the program the graduate can

1. Apply knowledge and theories to a specialized area of advanced practice nursing, nursing administration or community health.
2. Assume responsibility and accountability for a specialized area of advanced practice nursing, nursing administration or community health.
3. Demonstrate competency in the areas of
  - a. Collaboration with other health care professionals
  - b. Research interpretation, utilization, and conduct
  - c. Direct advanced practice nursing, nursing administration or community health
  - d. Consultation
  - e. Professional nursing leadership
  - f. Change agent skills
  - g. Ethical decision-making skills
  - h. Expert guidance and coaching
4. Function effectively in an advanced practice nursing, nursing administration, community health, or nursing education role.

## REQUIREMENTS FOR ADMISSION

1. An official transcript from the accredited college or university where you earned your BSN as well as transcripts for all graduate course work
2. A grade point average of 3.0 on a 4 point scale for all undergraduate and graduate course work reflected on transcript(s)
3. Official scores for the Miller Analogy Test (MAT) or Graduate Record Exam (GRE)

4. Three letters of reference as specified on the application form
5. A minimum score of 550 on the Test of English as a Foreign Language (TOEFL) for all applicants who have English as a second language or are not graduates of programs in the United States
6. A current license to practice nursing in any state with eligibility for licensure in Louisiana
7. A minimum of one year of experience in the area of specialization, within the last five years; Neonatal NP applicants need two years of experience in Level III NICU
8. For the Nurse Anesthesia specialization the following are also required
  - a. Three semester hour graduate level statistics courses (BIOS 6221 or equivalent)
  - b. Minimum of one year critical care experience
  - c. Basic life support certification
  - d. Advanced cardiac life support certification
  - e. Completion of interview process (interviews are by invitation only)
  - f. Official scaled score of 400 or greater on the Miller Analogy Test (if before 2004, a raw score of 50 or above) or Graduate Record Exam scores of equal to or greater than 500 verbal, 500 quantitative and 3.5 analytical (if before October 2002, a combined score of 1500 on three subtests)

## Non-Degree Post Master's Study

The graduate program allows enrollment of nurses holding an earned degree from a nationally accredited program in graduate coursework. The course of study ranges from 23 to 31 semester hours depending upon the student's career goals and an individualized evaluation of the academic record. Students complete requisite course work, which prepares them to be eligible to take national certification examinations. Such students are non-degree seeking special students and must have all coursework approved by the Associate Dean for the perspective Program or the Dean.

## GRADUATION REQUIREMENTS

Students must meet the following graduation requirements.

1. Satisfactory completion of 35 to 50 semester hours as specified by the curriculum, excluding the Nurse Anesthesia Curriculum
2. Fulfillment of all clinical practice hours as specified by the curriculum
3. A cumulative GPA of 3.0 or higher on all college work attempted at LSUHSC with no grade lower than a B in nursing courses, and no grade lower than a C in the supporting non-nursing courses
4. Recommendation of the Faculty, and approval by the Admissions, Progression and Graduation Committee
5. Attendance at Commencement (unless specifically excused by the Dean)
6. Verification that all materials belonging to the Health Sciences Center and cooperating agencies have been returned through the proper procedures; these materials

would include such items as library books, equipment, keys, furniture or related items

7. Satisfactory status concerning all financial obligations to the LSU System

## CURRICULUM

The Master of Nursing is a specialized professional degree similar to others offered in the LSU System. The total number of credits for the degree is between 35 to 50 semester hours (excluding nurse anesthesia). Students may attend full or part time. A curriculum plan is designed by the student and faculty advisor in accordance with the student's educational goals and interests. Core courses are required of students regardless of selected area of nursing focus. The structure and content of the curriculum are based on the rationale that theory provides the conceptual basis for nursing practice. Courses are arranged so that theory and practice are presented concurrently. Courses are classified under four major headings – Core, Nursing Focus, Support Area, and Electives.

### Core Courses

Core nursing courses contain essential content relevant to the preparation of graduates with the Master of Nursing degree. The courses include an examination of theories, trends, and issues, which shape nursing, competencies of advanced practice, and principles and concepts of research. Courses considered core to the Master's curriculum are Foundations of Advanced Nursing Practice, Nursing Research Design and Methodology, Advanced Statistics, and Health Care Management (For students enrolled in advanced practice roles)

### Nursing Focus Areas

There are three areas of nursing focus Nursing Administration; Community Health Nursing; and Advanced Practice Nursing including Clinical Nurse Specialist (Adult Health Nursing, Parent-Child Health Nursing, and Psychiatric and Community Mental Health Nursing); Nurse Anesthesia; and Nurse Practitioner (Neonatal Nursing and Primary Care Nursing). Each area builds on the knowledge and skills acquired in the Bachelor of Science in Nursing Degree curriculum and emphasizes the utilization of theoretical formulations as a basis for nursing practice. Graduates are prepared for direct administrative, community health or advanced clinical practice as providers and organizers of the health care delivery process or as nurse educators.



## RN TO MN PLAN OF STUDY

The RN-MN Program of study is for the highly motivated qualified nurse who wishes to pursue advanced coursework in nursing. The curriculum meets the requirements of the Board of Regents and the State Board of Nursing. The non-traditional course delivery focuses on the augmentation of existing teaching/learning strategies with web-based internet applications, weekend scheduling and flexible clinical instruction. RN's participating in this program receive a baccalaureate equivalency facilitating graduates meeting the Louisiana State Board of Nursing requirement for persons interested in teaching in Louisiana Schools of Nursing.

### Requirements for Admission to RN to MN Plan of Study

1. A complete official transcript from an accredited program with an Associate Degree of Diploma in Nursing indicating a minimum of 3.0 grade point average (on a 4.0 scale) in nursing and supportive courses
2. A complete application packet
3. Three letters of recommendations – one from an immediate supervisor in a recent work setting, one from a person who has had direct contact with the applicant in an academic setting and one from a professional associate of the applicant's choosing
4. Complete all prerequisite work
5. Proof of recent professional work experience; a minimum of two years of work experience as a registered nurse in or related to the selected clinical area is required
6. Official scores on the Graduate Record Examination or the Miller Analogies Test, taken after all general education pre-requisites have been completed
7. Completion of a personal interview with a designated faculty member after the admission file is complete
8. A current unencumbered license to practice professional nursing in Louisiana
9. Provides evidence that meets student health requirements
10. Proof of immunization or immune status as required by clinical practice
11. Adequate health insurance coverage



RN-MN Plan of Study	Credit Hours	Transfer Credits	LSUHSC classes **
<b>Pre-requisite Courses</b>			
General Biology & Lab	4	X	
General Chemistry or Intro to Chemistry	3	X	
General Psychology	3	X	
Intro to Sociology	3	X	
Arts Elective	3	X	
English Composition I and II	5	X	
English Literature (>2000)	3	X	
Economics	3	X	
Political Science (American Government)	3	X	
Computer Science	3	X	
<b>Support Courses</b>			
Humanities Elective	3	X	
Humanities Elective (>3000)	3	X	
Microbiology (with or without lab)	3-4	X	
Physiology & Lab	4	X	
Anatomy & Lab	4	X	
Organic/Biochemistry or Chemistry Elective	3	X	
Psychology Development	3	X	
Psychology Abnormal	3	X	
Nutrition	3	X	
<b>Nursing Courses</b>			
NURS Elective	1		X
NURS 4375 RN Psychiatric/Community Mental Health Nursing	5		X
NURS 4376 RN Psychiatric/Community Health Practicum	3		X
Transition to Professional Nursing I (RN-MN Theory)	5		X
Transition to Professional Nursing II (RN-MN Practicum)	3		X
<b>Core Graduate Courses</b>			
BIOS 6221 Advanced Statistics	3		X
NURS 6303 Nursing Research I	3		X
NURS 6304 Nursing Research II	3		X
NURS 6305 Foundations of Advanced Nursing Practice	3		X
NURS 6306 Healthcare Management	3		X

**MASTER OF NURSING  
CURRICULUM**

**Nursing Administration Track**

**First Year Fall Semester**

	Credits
NURS 6350 Nursing Administration I .....	4
NURS 6305 Foundations of Advanced Nursing Roles .....	3
BIOS 6221 Advanced Statistics .....	3
<b>Total .....</b>	<b>10</b>

**First Year Spring Semester**

	Credits
NURS 6351 Nursing Administration II .....	4
NURS 6303 Nursing Research I .....	3
NURS 6368 Advanced Nursing Administration Concepts I .....	3
<b>Total .....</b>	<b>10</b>

**Second Year Fall Semester**

	Credits
NURS 6352 Nursing Administration III .....	4
NURS 6304 Nursing Research II .....	2
NURS 6369 Advanced Nursing Administration Concepts II .....	3
<b>Total .....</b>	<b>9</b>

**Second Year Spring Semester**

	Credits
Elective .....	3
NURS 6390 Thesis or Elective .....	3
<b>Total .....</b>	<b>6</b>

**TOTAL CREDITS EARNED .....35**

**Clinical Nurse Specialist Track Adult  
Health Nursing**

**First Year Fall Semester**

	Credits
NURS 6310 Adult Health Nursing I .....	4
NURS 6305 Foundations of Advanced Nursing Roles .....	3
HLSC6410 Pathophysiology .....	3
BIOS 6221 Advanced Statistics .....	3
<b>Total .....</b>	<b>13</b>

**First Year Spring Semester**

	Credits
NURS 6311 Adult Health Nursing II .....	4
NURS 6303 Nursing Research I .....	3
HLSC6409 Advanced Pharmacology .....	3
Elective .....	3
<b>Total .....</b>	<b>13</b>

**Second Year Fall Semester**

	Credits
NURS 6313 Adult Health Nursing III .....	4
NURS 6304 Nursing Research II .....	2
NURS 6306 Health Care Management .....	3
Elective .....	3
<b>Total .....</b>	<b>12</b>

**TOTAL CREDITS EARNED .....38**

**Clinical Nurse Specialist Track  
Parent-Child Health Nursing**

**First Year Fall Semester**

	Credits
NURS 6330 Parent-Child Health Nursing I .....	4
NURS 6305 Foundations of Advanced Nursing Roles .....	3
HLSC6410 Pathophysiology .....	3
BIOS 6221 .....	3
<b>Total .....</b>	<b>13</b>

**First Year Spring Semester**

	Credits
NURS 6331 Parent-Child Health Nursing II .....	4
NURS 6303 Nursing Research I .....	3
HLSC6409 Advanced Pharmacology .....	3
Elective .....	3
<b>Total .....</b>	<b>13</b>

**Second Year Fall Semester**

	Credits
NURS 6332 Parent-Child Health Nursing III .....	4
NURS 6304 Nursing Research II .....	2
NURS 6306 Health Care Management .....	3
Elective .....	3
<b>Total .....</b>	<b>12</b>

**TOTAL CREDITS EARNED .....38**



**Clinical Nurse Specialist Track  
Psychiatric-Community Mental  
Health Nursing**

**First Year Summer Semester**

	Credits
NURS 6305 Foundations of Advanced Nursing Roles.....	3
HLSC6425 Psychopharmacology .....	3
<b>Total .....</b>	<b>6</b>

**First Year Fall Semester**

	Credits
PSCH 6801 Fundamentals of Applied Biopsychology I .....	3
BIOS 6221 Statistics .....	3
NURS 6306 Health Care Management.....	3
<b>Total .....</b>	<b>9</b>

**First Year Spring Semester**

	Credits
NURS 6320 Psychiatric and Community Mental Health Nursing I .....	3
NURS 6327 Clinical Practicum I .....	3
NURS 6303 Research I .....	3
<b>Total .....</b>	<b>9</b>

**Second Year Summer Semester**

	Credits
Elective – Nursing Education, Forensic Psychiatric Nursing, Special Populations or Independent Study Other .....	1-3
<b>Total .....</b>	<b>3</b>

**Second Year Fall Semester**

	Credits
NURS 6321 Psychiatric and Community Mental Health Nursing II .....	3
NURS 6328 Clinical Practicum II .....	3
NURS 6304 Nursing Research II .....	2
<b>Total .....</b>	<b>8</b>

**Second Year Spring Semester**

	Credits
NURS 6322 Psychiatric and Community Mental Health Nursing III .....	3
NURS 6329 Clinical Practicum III .....	3
Elective (optional) Nursing Education, Forensic Psychiatric Nursing, Special Populations or Independent Study, Thesis, Other .....	3
<b>Total .....</b>	<b>9</b>

**TOTAL CREDITS EARNED ..... 42-44**

**Community Health Track  
Advanced Public Health-Community  
Health Nursing**

**First Year Summer Semester**

	Credits
NURS 6305 Foundations of Advanced Nursing Roles.....	3
<b>Total .....</b>	<b>3</b>

**First Year Fall Semester**

	Credits
NURS 6340 Advanced Public Health/Community Health I .....	4
PATHO 0210 Epidemiology.....	3
BIOS 6221 Advanced Statistics.....	3
NURS 6325 Environmental Health Nursing .....	3
<b>Total .....</b>	<b>13</b>

**First Year Spring Semester**

	Credits
NURS 6341 Advanced Public Health-Community Health Nursing II .....	4
NURS 6303 Nursing Research I .....	3
NURS 6306 Health Care Management.....	3
Elective (Nursing) .....	3
<b>Total .....</b>	<b>13</b>

**Second Year Summer Semester**

	Credits
NURS 6326 Practicum: Advanced Public Health/Community Health Nursing.....	3
<b>Total .....</b>	<b>3</b>

**Second Year Fall Semester**

	Credits
NURS 6342 Advanced Public Health/Community Health Nursing III .....	4
NURS 6304 Research II .....	2
Elective .....	3
<b>Total .....</b>	<b>9</b>

**TOTAL CREDITS EARNED .....41**



**Nurse Anesthesia**

Prerequisite: Graduate Level Statistics .....3

**First Year**

	Credits
NURS 6303 Nursing Research I .....	3
NURS 6305 Foundations of Advanced Nursing Practice.....	3
NURS 6306 Health Care Management.....	3
NURS 6315 Advanced Health Assessment.....	4
HLSC 6409 Advanced Pharmacology .....	3
NURS 8301 Anatomy, Physiology, and Pathophysiology for Nurse Anesthesia I.....	4
NURS 8307 Advanced Pharmacology for Nurse Anesthesia .....	5
NURS 8310 Basic Principles of Anesthesia .....	4
NURS 8320 Nurse Anesthesia Clinical Practicum I .....	4
NURS 8311 Advanced Principles of Anesthesia.....	3
NURS 8321 Nurse Anesthesia Clinical Practicum II .....	10
NURS 8303 Anatomy, Physiology, and Pathophysiology for Nurse III .....	3
<b>Total .....</b>	<b>49</b>

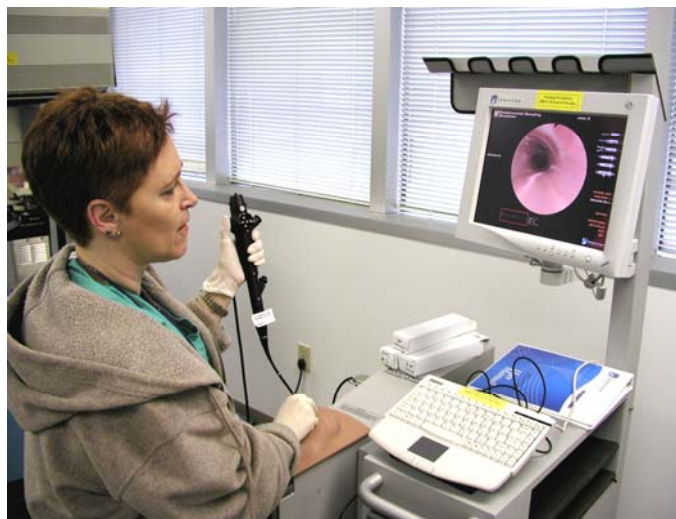
**Second Year**

	Credits
NURS 8302 Anatomy, Physiology, and Pathophysiology for Nurse Anesthesia II .....	3
NURS 8322 Nurse Anesthesia Clinical Practicum III .....	11
NURS 8323 Nurse Anesthesia Clinical Practicum IV .....	11
NURS 6304 Nursing Research II .....	2
NURS 8324 Nurse Anesthesia Clinical Practicum V .....	12
<b>Total .....</b>	<b>39</b>

**Third Year**

	Credits
NURS 8325 Nurse Anesthesia Clinical Practicum VI .....	12
NURS 8326 Nurse Anesthesia Clinical Practicum VII .....	12
<b>Total .....</b>	<b>24</b>

**TOTAL CREDITS EARNED .....115**



**Nurse Practitioner Track  
Neonatal Nursing**

**First Year Fall Semester**

	Credits
NURS 6336 Nursing Management of the Childbearing Family .....	4
NURS 6305 Foundations of Advanced Nursing Roles.....	3
NURS 6335 Neonatal Physiology .....	3
BIOS 6221 .....	3
<b>Total .....</b>	<b>13</b>

**First Year Spring Semester**

	Credits
NURS 6337 Nursing Management of the High Risk Neonate I.....	4
NURS 6303 Nursing Research I .....	3
NURS 6306 Health Care Management.....	3
<b>Total .....</b>	<b>10</b>

**First Year Summer Semester**

	Credits
NURS 6339 Nursing Case management of the High Risk Neonate .....	3
<b>Total .....</b>	<b>3</b>

**Second Year Fall Semester**

	Credits
NURS 6338 Nursing Management of the High Risk Neonate II.....	4
NURS 6304 Nursing Research II .....	2
HLSC6409 Advanced Pharmacology .....	3
Elective .....	3
<b>Total .....</b>	<b>12</b>

**TOTAL CREDITS EARNED .....38**



**Nurse Practitioner Track  
Primary Care Nursing**

**RECAPITULATION OF COURSES BY  
NURSING FOCUS AREAS**

**First Year Summer Semester**

	Credits
NURS 6315 Advanced Health Assessment and Diagnostic Measurement .....	4
NURS 6305 Foundations of Advanced Nursing Practice.....	3
<b>Total .....</b>	<b>7</b>

**First Year Fall Semester**

	Credits
NURS 6353 Primary Care in Community Health/Public Nursing I: Episodic Care .....	5
HLSC 6409 Advanced Pharmacology .....	3
HLSC6410 Advanced Pathophysiology .....	3
<b>Total .....</b>	<b>11</b>

**First Year Spring Semester**

	Credits
NURS 6354 Primary Care in Community Health/Public Nursing II: Chronic Care .....	5
NURS 6306 Health Care Management.....	3
<b>Total .....</b>	<b>8</b>

**Second Year Summer Semester**

	Credits
NURS 6355 Primary Care in Community Health/Public Nursing III: Women Health .....	4
<b>Total .....</b>	<b>4</b>

**Second Year Fall Semester**

	Credits
NURS 6356 Primary Care in Community Health/Public Health Nursing IV: Care of Children/Adolescents .....	5
BIOS 6221 .....	3
NURS 6303 Nursing Research I .....	3
<b>Total .....</b>	<b>11</b>

**Spring Second Year Semester**

	Credits
NURS 6357 Primary Care in Community Health/Public Nursing V.....	4
NURS 6304 Nursing Research II .....	2
<b>Total .....</b>	<b>6</b>
NURS 6390 Thesis (Optional) .....	3
<b>Total .....</b>	<b>3</b>

**TOTAL CREDITS EARNED ..... 47-50**

**Nursing Administration**

- NURS 6350 Nursing Administration I
- NURS 6351 Nursing Administration II
- NURS 6352 Nursing Administration III
- NURS 6368 Advanced Nursing Administration Concepts I
- NURS 6369 Advanced Nursing Administration Concepts II

**Advanced Practice Nursing**

**A. Clinical Nurse Specialist**

**Adult Health Nursing**

- NURS 6310 Adult Health Nursing I
- NURS 6311 Adult Health Nursing II
- NURS 6313 Adult Health Nursing III

**Parent-Child Health Nursing**

- NURS 6330 Parent-Child Health Nursing I
- NURS 6331 Parent-Child Health Nursing II
- NURS 6332 Parent-Child Health Nursing III

**Psychiatric Community Mental Health Nursing**

- NURS 6320 Psychiatric Community Mental Health Nursing I
- NURS 6321 Psychiatric Community Mental Health Nursing II
- NURS 6322 Psychiatric Community Mental Health Nursing III
- NURS 6327 Psychiatric Community Health Nursing I: Clinical Practicum I
- NURS 6328 Psychiatric Community Health Nursing I: Clinical Practicum II
- NURS 6329 Psychiatric Community Health Nursing I: Clinical Practicum III

**B. Nurse Practitioner**

**Neonatal Nursing**

- NURS 6335 Neonatal Physiology
- NURS 6336 Advanced Nursing Management of the Childbearing Family
- NURS 6337 Nursing Management of the High Risk Neonate I
- NURS 6338 Nursing Management of the High Risk Neonate II
- NURS 6339 Nursing Case Management of the High Risk Neonate

**Primary Care Nursing**

- NURS 6353 Primary Care in Community Health/Public Health Nursing I: Episodic Care
- NURS 6354 Primary Care in Community Health/Public Health Nursing II: Chronic Care
- NURS 6355 Primary Care in Community Health/Public Health Nursing III: Women's Health
- NURS 6356 Primary Care in Community Health/Public Health Nursing IV: Children and Adolescents
- NURS 6357 Primary Care in Community Health/Public Health Nursing V: Transition to Advanced Nursing Practice

**C. Nurse Anesthesia**

- NURS 8301 Integrated Anatomy, Physiology, and Pathophysiology for Nurse Anesthesia I

NURS 8302 Integrated Anatomy, Physiology, and Pathophysiology for Nurse Anesthesia II  
NURS 8303 Integrated Anatomy, Physiology, and Pathophysiology for Nurse Anesthesia III  
NURS 8307 Advanced Pharmacology for Nurse Anesthesia  
NURS 8310 Basic Principles of Anesthesia  
NURS 8311 Advanced Principles of Anesthesia  
NURS 8320 Nurse Anesthesia Clinical Practicum I  
NURS 8321 Nurse Anesthesia Clinical Practicum II  
NURS 8322 Nurse Anesthesia Clinical Practicum III  
NURS 8323 Nurse Anesthesia Clinical Practicum IV  
NURS 8324 Nurse Anesthesia Clinical Practicum V  
NURS 8325 Nurse Anesthesia Clinical Practicum VI  
NURS 8326 Nurse Anesthesia Clinical Practicum VII

#### Public Health/Community Health Nursing

NURS 6340 Advanced Public Health/Community Health Nursing I  
NURS 6341 Advanced Public Health/Community Health Nursing II  
NURS 6342 Advanced Public Health/Community Health Nursing III  
NURS 6326 Practicum: Advanced Public Health/Community Health Nursing

#### Support Courses Required for Advanced Practice

##### Nursing

NURS 6315 Advanced Health Assessment (all students except Neonatal Nurse Practitioner)  
HLSC6409 Advanced Pharmacology (all students except Neonatal Nurse Practitioner)  
HLSC6410 Pathophysiology (all students except Neonatal Nurse Practitioner)  
HLSC6425 Psychopharmacology (only for Psych CNS)  
Other Support Courses maybe recommended for certain Advanced Practice Nursing specialties.

##### Electives

###### A. Nursing

NURS 6411 Nursing Informatics  
NURS 6360 Curriculum Development in Undergraduate Nursing Education  
NURS 6361 Practicum in Undergraduate Nursing Education  
NURS 6366 Advanced Practice Role in Case Management I  
NURS 6367 Advanced Practice Role in Case Management II  
NURS 6381 Selected Topics in Nursing  
NURS 6382 Ethical Issues in Nursing Practice  
NURS 6392 Independent Study Nursing  
NURS 6390 Thesis

###### B. Non-Nursing

PSYC 6101 Fundamentals for Applied Development Psych I (PSYCH Community Mental Health students only)  
PSYC 6400 Social Psychology (PSYCH Community Mental Health students only)  
PSYC 6801 Fundamental of Applied Biopsychology I (PSYCH Community Mental Health students only)  
Non nursing graduate level courses must be pre-approved by the faculty advisor.

## DOCTOR OF NURSING SCIENCE – D.N.S.

The degree Doctor of Nursing Science is a research-focused degree. It is conferred for work of distinction in which the student displays the ability to make an original contribution of scholarship in nursing. The distinctive feature of this curriculum is its emphasis on clinical nursing expertise with select patient/client groups within and across nursing specialties. Graduates are prepared to improve health service to people through the improvement of nursing practice. They achieve this goal through evaluating forces influencing health, synthesizing knowledge of health needs and problems of select patient/client groups, testing knowledge and applying findings to nursing practice. The curriculum builds on the knowledge derived from the master of nursing degree.

### PURPOSE

The purpose of the doctoral curriculum is to educate qualified persons to make dynamic contributions to the improvement of nursing practice. The curriculum enables students to advance the discipline of nursing through using expertise in practice, engaging in scholarly research and other activities, and assuming leadership roles as nurse educator or clinical consultant.

### OBJECTIVES

Upon completion of the requirements for the doctoral degree, the graduates will demonstrate the following outcomes.

1. Demonstrate proficiency in research methods and scholarship appropriate to nursing inquiry.
2. Influence the development of nursing and health policy.
3. Contribute to the development of nursing knowledge and theory.
4. Assume leadership roles in the practice of research, teaching, and consultation.

### ADMISSIONS CRITERIA

1. A baccalaureate and a master's degree in nursing from a college or university approved by a recognized national accrediting body.\*
2. A grade point average of 3.5 on a 4 point scale for all post-baccalaureate degree study completed at a college or university.
3. Satisfactory official scaled score of 400 or greater on the Miller Analogy Test (MAT) or Graduate Record Exam (GRE) of 500 Verbal, 500 Quantitative, and 3.5 Analytical.
4. A minimum score of 550 on the Test of English as a Foreign Language (TOEFL) for all applicants who have English as a second language or are not graduates of programs in the United States.
5. One example of a published or unpublished scholarly paper written by the applicant and submitted with the application.
6. Three letters of reference as specified on the application form.

7. A current license to practice nursing in any state, with eligibility for licensure in Louisiana.
  8. A minimum of one year of post-graduate clinical nursing experience; some specializations may require more years of experience
  9. A personal interview with a director of the Doctoral Program
- \* Students who have a Masters Degree in another field may be accommodated on an individual basis as prescribed by their Faculty Advisor.



## SELECTION OF MAJOR PROFESSOR

Students who have successfully completed the prescribed 12 hours of doctoral study are eligible to select their major professor. The major professor is selected before undertaking support courses.

## PROGRESSION TO DOCTORAL CANDIDACY GENERAL EXAMINATION

Students who have successfully completed 48 semester hours included in their official degree plan and all academic requirements recommended by the major professor are eligible to write the general examination during the next semester upon endorsement by their major professor. Students who pass the general examination are re-classified as doctoral candidates. The students must be enrolled and paying tuition the semester General Exams are taken.

## CERTIFICATION FOR THE DOCTORAL DEGREE - FINAL EXAMINATION

The Final Examination is the oral defense of the dissertation. Doctoral candidates, who have registered for dissertation advisement for at least two semesters (or one semester and one summer term) and completed a dissertation to the satisfaction of the dissertation committee, are eligible to take the final examination. Students who successfully defend the dissertation are re-classified as certified doctoral candidates for the degree Doctor of Nursing Science.

## CURRICULUM

The curriculum sequences interrelated coursework in nursing knowledge, research, and investigation of nursing phenomena with nursing education or clinical consultation. Formal study is

concluded with the successful completion of the doctoral dissertation.

## REQUIREMENTS FOR GRADUATION DOCTOR OF NURSING SCIENCE

Students must meet the following graduation requirements.

1. Satisfactory completion of a minimum of 54 semester hours of course work as specified by the curriculum and the Major Professor
2. Fulfillment of all clinical practice hours as specified by the curriculum
3. A cumulative GPA of a 3.0 or higher on all course work, with no grade lower than a B
4. Satisfactory completion of the General Examination
5. Completion and satisfactory defense of a dissertation directed by a dissertation committee
6. Recommendation of the Faculty, and approval by the Admissions, Progression, and Graduation Committee
7. Attendance at Commencement (unless specifically excused by the Dean)
8. Verification that all materials belonging to the Health Sciences Center and cooperating agencies have been returned through the proper procedures; these materials would include such items as library books, equipment, keys, furniture, or related items.
9. Satisfactory status concerning all financial obligations to the LSU System



**DOCTOR OF NURSING SCIENCE  
CURRICULUM**

**Core Courses**

	Credits
NURS 7301 Development of Nursing Knowledge .....	3
NURS 7303 Design and Methodology for Qualitative Research.....	3
NURS 7304 Measurement of Nursing Phenomena .....	3
NURS 7305 Design and Methodology for Quantitative Research.....	3
NURS 7306 Nursing and Health Policy .....	3
NURS 7307 Theory Development in Nursing.....	3
BIOS 6222 Multivariate Statistics.....	3
<b>Total Core Courses.....</b>	<b>21</b>

**Nursing Focus Areas**

(Clinical or Administration Focus)

	Credits
NURS 7320 Investigation of Nursing Phenomena I .....	3
NURS 7321 Investigation of Nursing Phenomena II .....	3
NURS 7322 Investigation of Nursing Phenomena III .....	3
<b>Total Nursing Focus .....</b>	<b>9</b>

**Functional Courses**

**Nursing Education**

	Credits
NURS 7370 Graduate Nursing Education.....	3
NURS 7371 Role of Graduate Faculty in the Academic Community .....	3
NURS 7372 Fieldwork in Graduate Nursing Education .....	3
<b>Total Nursing Education.....</b>	<b>9</b>

**Clinical Consultation**

	Credits
NURS 7364 Clinician as Consultant I .....	3
NURS 7366 Clinician as Consultant II .....	3
NURS 7367 Clinician as Consultant III .....	3
<b>Total Functional Courses.....</b>	<b>9</b>

**Support Courses (Non Nursing) .....**9

**Dissertation**

NURS 8000 Dissertation .....	6
<b>Total .....</b>	<b>6</b>

**TOTAL .....** 54 Minimum

**DOCTOR OF NURSING SCIENCE  
CURRICULUM PLAN \***

A curriculum plan for full time students entering the Fall semester may be as follows.

**Fall Semester**

	Credits
NURS 7301 Development of Nursing Knowledge .....	3
NURS 7305 Design and Methodology for Qualitative Research.....	3
NURS 7306 Nursing and Health Policy .....	3
<b>Total .....</b>	<b>9</b>

**Spring Semester**

	Credits
NURS 7303 Design and Methodology for Quantitative Research .....	3
NURS 7320 Investigation of Nursing Phenomena I .....	3
NURS 7364 Clinician as Consultant I <b>or</b>	
NURS 7370 Graduate Nursing Education.....	3
BIOS 6222 Multivariate Statistics.....	3
<b>Total .....</b>	<b>12</b>

**Summer Session**

	Credits
Support Courses (Non-Nursing) .....	6
<b>Total .....</b>	<b>6</b>

**Fall Semester**

	Credits
NURS 7304 Measurement of Nursing Phenomena .....	3
NURS 7321 Investigation of Nursing Phenomena II .....	3
NURS 7371 Role of Graduate Faculty in the Academic Community or NURS 7366 Clinician as Consultant II .....	3
Support Course (Non-Nursing) .....	3
<b>Total .....</b>	<b>12</b>

**Spring Semester**

	Credits
NURS 7322 Investigation of Nursing Phenomena III .....	3
NURS 7372 Fieldwork in Graduate Education or NURS 7367 Clinician as Consultant III .....	3
NURS 7307 Theory Development in Nursing.....	3
<b>Total .....</b>	<b>9</b>

**Summer, Fall, and Spring**

	Credits
NURS 8000 Dissertation .....	6
<b>Total .....</b>	<b>6</b>

**TOTAL Credits Earned .....**54

\* This plan represents the minimum hours. Additional hours may be prescribed by the major professor as needed.

## FACULTY DEVELOPMENT PROGRAM

The Faculty Development Program promotes the education, research, and practice service goals of the School of Nursing through continuing education for registered nurses and special projects focused on community needs, and the promotion of faculty practice and service activities. Special projects, funded through corporate sponsorship, provide opportunities for faculty to improve patient/client care, promote professional dialogue between education and service, and demonstrate clinical excellence.

## CONTINUING EDUCATION

Continuing Education is an integral part of the Faculty Development Program in nursing. The philosophy of the School of Nursing supports the concept of continued learning through a commitment to provide instruction and service for Louisiana nurses. The changing roles and functions of the nurse within the health care system mandate the need for continued education to maintain currency in practice. The Continuing Education Program is accredited as a provider of continuing education in nursing through the American Nurses Credentialing Center. The program is also recognized by the Louisiana State Board of Nursing as an approved provider of nursing continuing education.

## INDIVIDUALLY GUIDED REMEDIATION OPPORTUNITY (IGRO)

The Continuing Education Programs offers non-credit courses as well as self-directed programs to prepare registered nurses who have been inactive to return to clinical practice. The latter offering is titled Individually Guided Remediation Opportunity (IGRO). For information concerning these programs, contact the Faculty Development Program at (504) 568-4202.



## COURSE DESCRIPTIONS

### COURSE NUMBERING SYSTEM

Courses numbered 0-4999 are open to students enrolled in the baccalaureate program. Courses numbered 5000-6999 are graduate level courses and are designed for students enrolled in programs leading to the degree Master of Nursing. Courses numbered 7000-7999 are reserved for students enrolled in the Doctor of Nursing Science program. Courses numbered 8000-8999 are restricted to Nurse Anesthesia students.

### Biometry

#### BIOM 3115 Basic Statistics

[3 Credits] A study of scientific methodology and the use of statistics in design and analysis of studies in the health sciences. Consideration is given to fundamentals of sample selection, measures of central tendency, measures of variation, correlation coefficients, and tests of hypotheses. 3 hours lecture. Prerequisite: College algebra.

#### BIOS 6221 Advanced Statistics

[3 Credits] Provides a general introduction to descriptive and inferential statistics, which include techniques and principles for summarizing data, an introduction to probability and probability distributions, point and interval estimation, hypothesis testing including t-tests, ANOVA, regression, and correlation. Examples and problems from the health sciences are used.

#### BIOS 6222 Multivariate Statistics

[3 Credits] Designed to introduce students, who have an understanding of univariate statistics to a variety of topics in both univariate and multivariate statistics. Topics will include multivariate analysis of variance, discriminant analysis, principal components analysis, canonical correlation analysis, logistic regression, resampling statistics, estimation, multiway contingency tables, meta-analysis, and experimental design. Includes a laboratory/computer lab component that focuses on data analysis and interpretation using the SPSS package.

### Health Science

#### HLSC 2410 Human Physiology

[4 Credits] Basic principles of the function, regulation, and coordination of the various organs and tissues of the human body are presented. Laboratory experiments emphasize observation and interpretation, and are correlated closely with the lectures, and are chosen on the basis of understanding normal physiological mechanisms. 3 hours lecture and 2 hours laboratory. Prerequisite: General biology, microbiology. Corequisite: HLSC 2412.

#### HLSC 2412 Human Anatomy

[4 Credits] Gross anatomy of the human body presented systematically. Laboratory demonstrations of body structure, with further study of these by students. 3 hours lecture and 2 hours laboratory. Prerequisite: General biology and microbiology. Corequisite: HLSC 2410.

#### HLSC 2414 Basic Organic and Biochemistry

[4 Credits] A presentation of the fundamental reaction capabilities of organic molecules and their functional groups, and the basic principles of physiological chemistry. 4 hours lecture. Prerequisite: First semester of general chemistry.

### **HLSC 2416 Health Assessment**

[3 Credits] This course includes principles, knowledge, and skills utilized in the systematic appraisal of the individual's health status throughout the life cycle. Opportunities for performing comprehensive health assessments will be provided in a laboratory setting. In lieu of this course, RN students register for NURS 3359 with the permission of instructor. 2 hours lecture and 2 hours laboratory. Prerequisites: HLSC 2410, 2412 and Psychology 2009.

### **HLSC 3409 Pharmacology**

[3 Credits] The course consists of lectures, conferences, and demonstrations leading to an understanding of the fundamental action of drugs and their effects through physiological and biochemical mechanisms. Emphasis is placed on toxicology and side effects of each group of drugs with the appropriate implications. 3 hours lecture. Prerequisite: HLSC 2410, 2414.

### **HLSC 3410 Pathophysiology**

[3 Credits] Emphasis is on the physiological changes, which are the result of pathologic processes. Builds upon and expands knowledge gained in anatomy, physiology, biochemistry, and health assessment. 3 hours lecture. Prerequisites: HLSC 2410, 2412, 2414, 2416, and 3409.

### **HLSC 3411 Health Promotion and Wellness**

[1 Credit] Introduces students to the theory and practice of health promotion with an emphasis on living a balanced lifestyle. The wellness dimensions (social, physical, intellectual, career, emotional, and spiritual) will be covered in a seminar format with experimental components utilized when necessary. The need to develop individualized health promotion programs so that the students, as future health care professionals, can model healthy lifestyles with patients in order to reduce disease and death will be emphasized. Students will be allowed to register for this course one time only. This course cannot be substituted for the nursing elective.

### **HLSC 3412 Management in Formal Organizations**

[3 Credits] Introduction to the basic concepts of planning, leading, and controlling personnel in formal organizations, including health agencies. Incorporates principles and theories of management and leadership, organizational philosophy and structure, personnel administration and evaluation, employer/employee relations, and marketing. 3 hours lecture.

### **HLSC 3424 Basic and Clinical Nutrition**

[3 Credits] The science of nutrition and its application to health and disease. 3 hours lecture. Prerequisite: HLSC 2414.

### **HLSC 4411 Interdisciplinary Care of the Dying Client and Family**

[1 Credit] The course focuses on the special needs of the client who is dying, as well as the family. Emphasis will be placed on the emotional stages of dying, major problems faced by the dying client and family, roles of the interdisciplinary team members to solve these problems, the special needs of the survivors during the bereavement period, and measures of support for the professional caregiver. Prerequisites: NURS 3355, 3357, and 3358 or permission of the instructor.

### **HLSC 4412 Nurse Summer Training Program**

[3 Credits] Provides ROTC nursing students progressive experience in the clinical nursing setting and knowledge of the duties, responsibilities, and expectations of the junior Army Nurse Corp (ANC). The cadet becomes familiar with basic soldierly and field medical skills expected of an Army nurse

operating in a field/combat environment. Prerequisites: NURS 3352 and eligibility as determined by ROTC.

### **HLSC 4413 Technological Innovation in the Health Professions**

[1 Credit] The focus is to acquaint the health professions student with the process of creating and developing innovations in health care. Content will cover the process of creating new technology, the steps required in developing an idea into practical form, and copyright and patent procedures.

Each student will be requested to sign a confidentiality agreement. Prerequisites: NURS 3352, 3356 or permission of the instructor.

### **HLSC 6409 Advanced Pharmacology**

[3 Credits] Consists of lectures, conferences and demonstrations leading to an understanding of the fundamental action of drugs and their effects through physiological and biochemical mechanisms. Emphasis is placed on toxicology and side effects of each group of drugs with the appropriate implications. Prerequisite: Eight semester hours of Anatomy and Physiology.

### **HLSC 6410 Pathophysiology**

[3 Credits] Explores the alterations in normal physiological function associated with a number of common pathologies. Focuses on the normal underlying physiology, the detection and diagnosis of pathophysiological changes resulting in disease, using a prevention and management approach if applicable.

### **HLSC 6411 Health Care Informatics**

[3 Credits] This course focuses on the methods and tools of information handling relative to selected aspects of health care, education, and research. The process of organizing, collecting, processing, and analyzing of data will be explored as a basis for clinical decision-making. Evidenced-based protocols and patient care systems will be stressed. Automation of communication, manuscript/proposal preparation, budgeting, and the integration of Word, SPSS and PowerPoint for professional presentations will be examined. The use of informatics in education will also be explored. Research findings in the use of informatics will be incorporated.

### **HLSC 6425 Psychopharmacology**

[3 Credits] Surveys basic neuropharmacology, the effects of various psychotropic drugs, and the action of drugs used to treat mental disorders. The emphasis of the course is on basic principles of neuropharmacology, distribution and elimination of drugs, drug-receptor interactions and dose-response relationships. In addition, the course provides actions of specific drugs and their effects on behavior and their uses in biological psychiatric treatment.

### **HLSC 7481 Topics in Health Sciences**

[3 Credits] Establishes Independent Study using the HLSC 7481 designation when work is being done with a faculty member outside the discipline of nursing with the approval of the Major Professor.

## **Neuroscience**

### **NRSC 420A Comprehensive Pain Management**

[1 Credit] This course will provide basic conceptual approaches to pain management, pain monitoring and assessment, and treatment modalities. It is taught by faculty from the Medical, Nursing, and Allied Health Schools.

## Nursing

### **NURS 2351 Foundations of Nursing Practice**

[6 Credits] An introduction to the nursing process with emphasis on nursing concepts and basic skills. Selected application of nursing process is accomplished in laboratory and clinical settings. 3 hours lecture, 3 hours laboratory, 4.5 hours clinical experience. Prerequisites: Completion of all previous sophomore courses as designated by fall or spring admission. Corequisites: HLSC 3409, 3424.

### **NURS 2359 Transition to Professional Nursing**

[2 Credits] This course is a prerequisite to the first clinical or non-clinical nursing course in which the LPN enrolls. Emphasis is on professional role change. Students will examine their own nursing experiences through exploration of professional, ethical, legal, and historical concepts. The course encompasses clinical nursing proficiency at the sophomore level and includes independent learning activities, instructor-led laboratory experiences, and inpatient practice. The 4 day clinical validation component will be in an acute care clinical setting. For LPN students only. (To be taken in lieu of NURS 2371) Prerequisite or Corequisite: HLSC 2416.

### **NURS 2371 Introduction to Professional Nursing**

[2 Credits] Introductory concepts related to professionalism, legal aspects and leadership in nursing are discussed. The baccalaureate conceptual framework and curriculum are included. Political, economic, and technological issues and trends are introduced. The historical development of nursing is explored. 2 hours lecture/seminar. Prerequisites: HLSC 2410, 2412, 2414 and Psychology 2009 or permission of the instructor.

### **NURS 3349 Special Studies in Nursing**

[1-3 Credits] This course consists of selected nursing and/or health care activities, readings, library research, and written work with follow-up conferences with the faculty member guiding the course. Prerequisite: Current enrollment in the Baccalaureate Nursing Program.

### **NURS 3352 Adult Health Nursing I**

[5 Credits] Theoretical foundations focus on the physiological changes occurring in adults with acute and chronic health problems. Application of the nursing process is directed toward assisting the client and family to cope with various levels of wellness. Clinical learning experiences will occur within a variety of settings. 3 hours lecture, 2 hours clinical experience. Prerequisites: NURS 2351 and 2371, HLSC 2416, 3409, 3424, and Psychology 3044. Corequisite or prerequisite: HLSC 3410.

### **NURS 3355 Child Health Nursing**

[4 Credits] This course provides exploration of theories, concepts, knowledge, and skills for comprehensive child health nursing. Emphasis is on child health maintenance and care of children with health problems. Students apply the nursing process and developmental theory as they work with children from infancy through adolescence, and their families. 2 hours lecture, 6 hours clinical experience. Prerequisites: NURS 3352, 3356 and HLSC 3410.

### **NURS 3356 Mental Health Nursing I**

[3 Credits] Emphasis is on the consumer's adaptation to stressors, which threaten mental health. The nursing process is applied to assist in coping with various levels of wellness. Community resources and utilization patterns of clients are investigated. Implementation of the nursing process occurs in a variety of hospitals. 1.5 hours lecture, 4.5 hours clinical experience. Prerequisites: NURS 2351 and 2371, Psychology 3044, and HLSC 2416, 3409, and 3424.

### **NURS 3357 Community Health Nursing I**

[3 Credits] Community health nursing theory and practice are introduced from a contemporary and emerging perspective. The basic concepts of epidemiology along with the principles and theories, which underline the practice of public health, will be introduced. Utilizing health promotion principles, the individual, family, community, and health care delivery system will be examined. 2 hours lecture, 3 hours clinical experience. Prerequisites: NURS 3352, 3356 and HLSC 3410.

### **NURS 3358 Health Care of the Childbearing Family**

[4 Credits] This course provides exploration of theories, concepts, knowledge, and skills for comprehensive health care of the childbearing family. The focus is on development and application of critical-thinking, problem-solving, relationship-building, and caring skills as they relate to the human experience of nursing the childbearing family. 2 hours lecture, 6 hours clinical experience. Prerequisites: NURS 3352, 3356, and HLSC 3410.

### **NURS 3375 Introduction to Professional Nursing Concepts**

[5 Credits] This course provides opportunities for RN students to explore concepts and methodological factors that influence professional practice. Students examine the context of professional practice, the evolution/trends of nursing as a profession and significant issues in contemporary practice. Course work provides opportunities for development as a group member, manager, and leader in today's health care environment. For RN students only.

### **NURS 4346 Gerontological Nursing**

[1 Credit] The course provides students with the opportunity to expand their knowledge of the normal aging process; to identify the sociological, psychological, and physiological variables causing deviations in the health of elderly persons; and to explore the various roles of the nurse in providing health care to the elderly. Seminar discussions focus on current, published nursing research findings. Prerequisites: NURS 3352, 3356 or permission of the instructor.

### **NURS 4347 Cross Cultural Nursing**

[1 Credits] Provides an opportunity for students to analyze both the theoretical and practical effects of cultural differences from the clients' perspective of their own health care. Emphasis is placed on determining implications for nursing practice and identifying topics for further study. Prerequisite: NURS 3352 or permission of the instructor.

### **NURS 4348 Independent Study in Nursing**

[1-3 Credits] This course focuses on nursing practice in an area related to the student's special interest. The student and faculty preceptor work together in developing the course outline and learning experiences. Prerequisites: NURS, 3355, 3357, and 3358.

### **NURS 4349 Nursing Care of the Oncology Patient**

[1 Credit] Provides the student an opportunity to develop an intelligent awareness of the clinical aspects of cancer as a group of diseases. Study is undertaken of oncologic nursing and its relation to prevention, treatment, and psychological support of the cancer client and family members. Prerequisite: NURS 3355, 3357 or permission of the instructor.

### **NURS 4350 Camp Nursing**

[2 Credits] Emphasis is on the application of the nursing process in assisting individuals and or groups to cope with various levels of wellness and client independence. Increasingly complex behaviors are expected as students implement the nursing process in a selected camp setting

with children and/or adolescents offering students clinical learning experiences in a community nursing. In addition to these experiences, the student will implement the teaching/learning process and work within the health care team. Prerequisite: NURS 3355, 3357 or permission of the instructor.

### **NURS 4351 Nursing Care of the High Risk Neonate**

[1 Credit] This course focuses on the nursing care of the high-risk neonate and family in the intensive care setting. The student will have the opportunity to develop expanded awareness of neonatal nursing interventions and strategies for care of high-risk neonates during various levels of physiological, neurological, and developmental adaptation. Prerequisites: NURS 3355, 3357, and 3358 or permission of the instructor.

### **NURS 4352 Adult Health Nursing II**

[4 Credits] Theoretical foundations focus on the physiological change occurring in adults/aged adults with acute complex health problems. Application of the nursing process is directed toward assisting the client and family to cope with acute health crisis. Clinical learning experiences occur in an acute care setting. 2 hours lecture, 6 hours clinical experience. Prerequisites: NURS 3352, 3355, 3357, 3358 and HLSC 3410.

### **NURS 4356 Mental Health Nursing II**

[4 Credits] Emphasis is on increasing the client's level of wellness through promotion of mental health. The major focus is on family assessment and analysis of group dynamics. The nursing process is applied to complex client situations in both inpatient and outpatient settings. 2 hours lecture, 6 hours clinical experience. Prerequisites: NURS 3355, 3356, 3357, and 3358.

### **NURS 4357 Community Health Nursing II**

[5 Credits] Community health nursing theory and practice is further expanded focusing on the nurse as a contributing member of the community's organization for health care delivery. The individual, family, group, and community will be addressed. The course will include community health theory, research findings, and practice settings, which will be utilized to promote and maintain health, and prevent disease. 2 hours lecture, 9 hours clinical experience. Prerequisites: NURS 3357, 4352, 4356 and HLSC 3412.

### **NURS 4359 Nursing Management in the Health Care System**

[4 Credits] Provides theory and practice in a variety of settings by synthesizing and applying theories of nursing, leadership, change, and management. Students examine their own leadership styles as well as nursing and management philosophies. Leadership and change agent roles are initiated in the development and implementation of health care, both independently and in collaboration with the health team. 1.5 hours lecture, 7.5 hours clinical experience. Prerequisites: NURS 4352, 4356 and HLSC 3412. Prerequisites or corequisites: NURS 4370, 4371 or NURS 3375 for RN to BSN students.

### **NURS 4360 The Business of Health Care**

[1 Credit] Relates economic and political science principles to health care practice. Lecture and seminar will be used to discuss business principles such as ownership, finances, personnel, access, and diversification. Prerequisites: NURS 3352, 3356 or permission of the instructor.

### **NURS 4361 EKG Interpretation and the Nursing Process**

[1 Credit] Prerequisites: NURS 3352 and HLSC 3410 or permission of the instructor. Focuses on the interpretation of

arrhythmia wave form characteristics that identify cardiac dysfunctions. Nursing process is applied to interactive case study situations with arrhythmia and intervention simulations.

### **NURS 4362 The Homeless: A Mental Health Nursing Challenge**

[1 Credit] Addresses the sociologic and psychologic implications of the condition in our culture known as homelessness. It is designed to provide the nursing student with the opportunity to analyze and evaluate the problems of the homeless related to mental health. The students will collaborate with nursing and health care professionals to assist the consumer in coping with the manifestations of homelessness. Seminars, formal presentations, and clinical/field experiences will be used to assist students to become knowledgeable of this subculture. Prerequisites: NURS 3356, 3357 or permission of the instructor.

### **NURS 4363 Perioperative Nursing**

[2 Credits] Focuses on clinical experience to develop skills necessary for the perioperative nursing role. Lecture, laboratory, and clinical topics introduce the student to the psychophysiological skills utilized in perioperative care. Prerequisites: NURS 3352 or permission of the instructor.

### **NURS 4364 Principles of Emergency Nursing**

[1 Credits] Designed to provide students with the opportunity to apply the nursing process in assisting the client and family experiencing acute alterations in physiological health. Implementation of the nursing process occurs in emergency departments of selected acute care settings. Prerequisites: NURS 3355, NURS 3352, and NURS 4352 or permission of the instructor.

### **NURS 4365 Outpatient Nursing: Management of the HIV Infected Client**

[1 Credit] Provides students the opportunity to apply the nursing process in assisting the HIV infected client and family experiencing chronic alternations in physiological health. Implementation of the nursing process occurs in the HIV primary care clinic within MCLNO's outpatient department.

### **NURS 4366 Complementary and Alternative Therapies for Nurses**

[1 Credit] This course offers an overview of complementary and alternative therapies; descriptions and demonstrations of ways complementary and alternative therapies can be used in clinical practice; and explores current scientific knowledge supporting the use of complementary and alternative therapies to promote healing and improve health. Prerequisites: None.

### **NURS 4367 Ethical and Legal Issues in Nursing**

[1 Credit] This elective provides the student the opportunity to explore issues encountered in professional nursing practice relating to ethical and legal situations. Emphasis will be placed on the student's analysis of issues to increase the ability to creatively examine and apply ethical and legal principles in nursing practice. Prerequisites: NURS 3355, 3357, and 3358 or permission of instructor.

### **NURS 4368 Introduction to Forensic Nursing**

[2 Credits] The course is an introduction to the emerging roles of the forensic nurse. The student will process selected literature and discuss components of the roles of the professional nurses working in forensic settings, particularly within the context of community, identifying opportunities for health promotion, advocacy, therapeutic intervention, and policy making related to clients who are perpetrators and/or victims of crime, violence, or trauma. Role theory, health systems theory, and the nursing process will be the context used to examine concepts of violence, victimization, boundary

violation, social deviancy, physical and mental wound assessment, and ethical decision making in forensic settings. Prerequisites: NURS 3352, 3356 or permission of the instructor.

**NURS 4370 Research in Nursing**

[3 Credits] NURS research is introduced with emphasis on the steps in the research process and the critique of reported research on a selected topic in nursing. An analysis of the current status of research on selected topics will be conducted using the critique process culminating in the identification of the need for additional research. Prerequisites: NURS 3355, 3357, and 3358. Prerequisite or Corequisite: BIOM 3115.

**NURS 4371 Perspectives in Professional Nursing**

[2 Credits] Emphasis is on professional development through increased personal accountability and role socialization. Current issues and trends are analyzed. Contemporary nursing leaders are identified and their impact on nursing practice is discussed. 2 hours lecture / seminar. Prerequisites: NURS 2371, 4352, 4356, and 4370.

**NURS 4375 RN Mental/Community Health Nursing**

[5 Credits] Provides the registered nurse student with a holistic perspective of individuals, families, groups, and community dynamics experienced in population focused care. This course focuses on synthesizing nursing, mental health, public, and community health theory to promote and preserve the health of populations. Emphasis will be placed on preventive strategies targeting health of populations. Prerequisite: NURS 3375, Co-requisite: NURS 4376.

**NURS 4376 RN Mental/Community Health Nursing Practicum**

[3 Credits] Provide an intensive clinical study of mental/community health nursing as a nurse generalist. Students will practice a concentrated time in the mental health/community health nursing setting based on their individual learning needs. Development and refinement of their role as a baccalaureate prepared nurse generalist with specific knowledge and clinical experience in mental/community health nursing are the expected clinical outcomes. Prerequisite: NURS 3375, co-requisite: NURS 4375.

**NURS 6303 Nursing Research I. Design and Methodology**

[3 Credits] Provides an overview of the research process including qualitative and quantitative approaches. Studies the relationship of nursing research to advanced practice nursing. Prerequisite or Corequisite: BIOS 6221.

**NURS 6304 Nursing Research II Design and Methodology**

[2 Credits] Focuses on research utilization and provides opportunities for continued involvement in the conduct of nursing research. Prerequisite: NURS 6303.

**NURS 6305 Foundations of Advanced Nursing Practice**

[3 Credits] An introduction to advanced professional nursing roles with the expectation of enhancing the influence and opportunities of these selected roles in various health care delivery systems. Focus is centered on the evolution and trends of selected advanced nursing roles; the changing environments of health care and how this affects the advanced role; issues related to the advanced nursing role and identified advanced role competencies, which are expected to insure creditable, safe, effective, and satisfying service.

**NURS 6306 Health Care Management**

[3 Credits] Required for advanced practice students only. Focuses on the role of the advanced practice nurse in the ongoing changes in organizational designs and systems, financing of health care delivery, ethics, and health policy. Explores the formulation of health policy, how to effect this process, and its impact on clinical practice and health care delivery. Addresses health care systems, including managed care and integrated systems of delivery, in the continuum of health care. Health care population management focuses on leadership and organizational relationships (internal and external to the environment) and advanced practice nursing (consultation and negotiation).

**NURS 6310 Adult Health Nursing I**

[4 Credits] Explores topics related to care of the adult such as development, cultural diversity, stages of wellness/illness, nursing assessment and diagnosis, and outcomes of care. Focuses on assisting adult patient/clients with health promotion and disease prevention. Emphasizes theory, research, and interventions related to stress/coping/adaptation, health management, and roles and relationships. Includes classroom and field experiences. Prerequisites or Corequisites: NURS 6305 and BIOS 6221.

**NURS 6311 Adult Health Nursing II**

[4 Credits] Explores the consultation and teaching roles of the clinical nurse specialist. Focuses on assisting adult patients/clients in the acute and rehabilitative phases of health care. Emphasizes theories, research, and interventions related to activity/exercise intolerance, cognition/perception, nutrition, sexuality, and sleep. Includes classroom and field experiences. Prerequisite: NURS 6310. Prerequisites or Corequisites: HSLSC 6409 and HLSC 6410. Corequisite: NURS 6303.

**NURS 6313 Adult Health Nursing III**

[4 Credits] Explores the research role of the clinical nurse specialist. Focuses on assisting the adult client and family in the continuum of chronic illness, home health, and long-term care. Emphasizes theories, research, and interventions related to chronic pain, dementia, elimination, grief, death and dying. Technological advances and strategies for effective interventions are explored. Includes classroom and field experiences. Prerequisite: NURS 6311.

**NURS 6315 Advanced Health Assessment**

[4 Credits] Focuses on the skills of assessment necessary in advanced nursing practice with an emphasis on development of comprehensive and problem specific psychosocial, development, cultural and epidemiological client centered databases throughout the life span. The student will analyze data from these databases to determine client health status, identify health problems, and formulate nursing diagnoses. The determination of psychomotor, development, cultural, nutritional, mental. in addition, physical health status in a clinical setting will enable the student to learn under the guidance and supervision of a faculty facilitator.

**NURS 6320 Psychiatric Community Mental Health Nursing I**

[4 Credits] Focus on psychotherapeutic and research skills needed for effectiveness in psychiatric mental health nursing. Emphasizes individual psychotherapy. Includes classroom and field experiences. Prerequisite or Corequisite: NURS 6305.

**NURS 6321 Psychiatric Community Mental Health Nursing II**

[4 Credits] Examines theories of family behavior and group dynamics. Provides background and opportunity for application of family therapy skills in advanced psychiatric

and community mental health nursing. Includes classroom and field experiences. Prerequisite: NURS 6320. Prerequisite or Corequisite: NURS 6303.

**NURS 6322 Psychiatric Community Mental Health Nursing III**

[4 Credits] Examines and applies theories of group therapy skills in advanced psychiatric and community mental health nursing. Includes classroom and field experiences. Prerequisite: NURS 6321.

**NURS 6325 Environmental Health Nursing**

[3 Credits] Focuses on: elements of the environment; principles of toxicology; contaminant exposure, risk and control; vulnerable populations and health/illness consequences; legislative and regulatory issues; and implications for environmental health nursing. Environmental justice, ethics, caring and the related role of nurse advocacy will be included. Local, national, and global ecological and environmental perspectives and social/human contributory will be included. Prerequisites or Corequisites: NURS 6340; PATH 210; BIOS 6221.

**NURS 6326 Practicum: Advanced Public Health/Community Health Nursing**

[3 Credits] Provides the student the opportunity to implement a community health program. The student will be introduced to the theory, structure, and strategies required to develop an evaluation plan for community health intervention program. Focus is reassessment of the previously identified community health needs. The student will develop an understanding of program development theory; program assessment; of program outcomes; and the assessment of efficiency required for successful community health programs. Issues related to maintaining community level change, and social and political implications are included. This is a practicum; therefore, the student is in clinical practice for 150 hours with some classroom activity. Prerequisites NURS 6340; NURS 6341; PATH 210; BIOS 6221.

**NURS 6327 Psychiatric Community Mental Health Nursing I: Clinical Practicum I**

[3 Credits] Focuses on the acquisition and application of therapeutic skills needed to attain effectiveness in psychiatric and community mental health nursing care of the client as an individual.

**NURS 6328 Psychiatric Community Mental Health Nursing II: Clinical Practicum II**

[3 Credits] Focuses on the acquisition and application of psychotherapeutic skills needed to attain effectiveness in psychiatric and community mental health nursing care of families.

**NURS 6329 Psychiatric Community Mental Health Nursing III: Clinical Practicum III**

[3 Credits] Focuses on the acquisition and application of psychotherapeutic skills needed to attain effectiveness in psychiatric and community mental health nursing care of groups.

**NURS 6330 Parent-Child Health Nursing I**

[4 Credits] Examines the spectrum of advanced parent-child nursing. Focus on advanced strategies to assess physical, psychosocial, cultural and development responses to health and illness. Serves as an introduction to advanced practice nursing and includes classroom and field experiences. Prerequisite or Corequisite: NURS 6305 and BIOS 6221.

**NURS 6331 Parent-Child Health Nursing II**

[4 Credits] Analyzes intervention models and theoretical basis for nursing actions. Includes classroom and field

experiences. Prerequisite: NURS 6330. Prerequisite or Corequisite: NURS 6303, HLSC 6409 and HLSC 6410.

**NURS 6332 Parent-Child Health III**

[4 Credits] Explore theoretical perspectives and related issues to evaluate patient outcomes, ethical aspects of care, client advocacy, and issues related to the delivery of care to women, children, and families. Includes classroom and field experiences. Prerequisite: NURS 6331.

**NURS 6335 Neonatal Physiology**

[3 Credits] Examines newborn physiology and pathophysiology and the implications for advanced nursing practice. Includes topics such as: genetic principles, basic embryology, physiology, and pathophysiology of neonatal systems.

**NURS 6336 Nursing Management of the Childbearing Family**

[4 Credits] Utilizes theory and research to appraise the health needs and problems of the normal and high risk pregnant woman and fetus. Examines associated risk variables that influence maternal/newborn outcomes; provides nursing management to the woman/fetus prenatal and during labor and delivery. Includes classroom and field experiences. Prerequisite or Corequisite: NURS 6303, NURS 6305 and NURS 6335.

**NURS 6337 Nursing Management of the High Risk Neonate I**

[4 Credits] Explores and utilizes strategies to manage the neonate who is critically ill, including appraisal, resuscitation, and stabilization. Includes management of the neonate with selected physiological problems, psychosocial/environmental needs of the neonate/family and the role of the advance practice nurse. Includes classroom and field experiences. Prerequisites: NURS 633; NURS 6336.

**NURS 6338 Nursing Management of the High Risk Neonate II**

[4 Credits] Examines chronic problems and the psychosocial environment needs of the neonate and family. Addresses ethical principles and legal issues. Includes classroom and field experiences. Prerequisite: NURS 6337.

**NURS 6339 Nursing Care Management of the High Risk Neonate III**

[3 Credits] Provides students an opportunity to expand their skills in the management of ill neonates and their families. Includes field experiences. (Summers only). Prerequisite: NURS 6337.

**NURS 6340 Advanced Public Health-Community Health Nursing I**

[4 Credits] Focuses on factors related to the development of public health nursing and subsequent areas of community nursing. Considers application of community assessment models and the development of community health programs. Emphasis is on conceptual frameworks for nursing practice. Examines national health priorities and intervention strategies. Includes classroom and field experiences. Prerequisites or Corequisites: NURS 6305, PATH 210, BIOS 6221.

**NURS 6341 Advanced Public Health-Community Health Nursing II**

[4 Credits] Focuses on the delivery of community health nursing. Includes the use of strategies and theories in the development of interventions that address priority health problems of aggregates or groups. Uses public health science and nursing frameworks to guide advanced nursing practice. Includes classroom and fieldwork. Prerequisite: NURS 6340.

**NURS 6342 Advanced Public Health-Community Health Nursing III**

[4 Credits] Focuses on the evaluation and reformulation of designated community health nursing programs. Emphasis is on synthesizing knowledge from nursing and other disciplines in the development, implementation and evaluation of programs designed to facilitate the health of population groups or subgroups. Includes classroom and field experiences. Prerequisites: NURS 6303, NURS 6341.

**NURS 6350 Nursing Administration I**

[4 Credits] Introduces the theories of nursing administration and health care management with selected models for the practice of nursing/health care management. Incorporates an overview of transformational leadership, the nature of organizations and elements of nursing practice that span the areas of specialization. Provides the establishment of a preceptor relationship with an executive level nurse manager, which continues throughout the student's program of study. Includes classroom and field experiences. Prerequisite or Corequisite NURS 6305.

**NURS 6351 Nursing Administration II**

[4 Credits] Focuses on in-depth exploration of the planning (strategic, change, financial) and organizing (managed care/integrated delivery systems) elements of nursing/health care administration. Emphasizes organizational, leadership and policy development. Explores interdisciplinary and interagency relationships (negotiations). Requires organizational analysis as part of field experience. Includes classroom and field experiences. Prerequisites: NURS 6303, and NURS 6350.

**NURS 6352 Nursing Administration III**

[4 Credits] Continues the examination of the components of the nursing administration/health care administration process, focuses on the theory, practice and analytic processes involved in directing and evaluating components of the organization. Presents content on continuous quality improvement, risk management, conflict resolution, ethical and legal factors, legislative activities, marketing/sales strategies, and information systems as factors, which exert control in selected aspects of health care delivery. Explores environmental issues, public health systems and health policy formation. Requires development of a business plan. Includes classroom and field experiences. Prerequisite: NURS 6351. Prerequisite or Corequisite: NURS 6304.

**NURS 6353 Primary Care in Community and Diagnostic Measurement Health/Public Health Nursing I: Episodic Care**

[5 Credits] Focuses on the study of episodic disorders managed in primary care practice. Emphasis is on health promotion, health protection, health maintenance, health restoration, and disease prevention with individuals and families. Students will apply nursing concepts, theories, diagnoses, therapies, skills, and techniques to provide care to individuals and families in various community health settings. Includes classroom and field experiences. Prerequisites: NURS 6315, Co-requisite: HLSC 6410, HLSC 6409.

**NURS 6354 Primary Care in Community Health/Public Health Nursing II: Chronic Care**

[5 Credits] Focuses on the study of chronic disorders seen in primary care practice with special attention to major community health public health concepts and therapies required in the development, implementation, and evaluation of primary health care. Clinical practice focuses on the application of nursing theory, pathophysiological and epidemiological concepts, and exploration of nursing

therapies, skills, and techniques essential to the provision of primary health care to the public in various community settings. Health promotion, health protection, health maintenance, health restoration, and disease progression are key concepts emphasized. Includes classroom and field experiences. Prerequisites: NURS 6315, HLSC 6409, HLSC 6410, NURS 6353.

**NURS 6355 Primary Care in Community Health/Public Health Nursing III: Women's Health**

[4 Credits] Builds on previous knowledge and practice of care of women and their families in selected community health settings. Focuses on the major medical and nursing concepts and therapies required in the primary health care of women and their families with minor, acute and chronic diseases. Health promotion, health protection, health maintenance, health restoration, and disease prevention for women and their families are emphasized. Pathophysiology, epidemiology, and medical and nursing interventions are the core content. Includes classroom and field experiences. Prerequisites: All support courses, NURS 6353, NURS 6354.

**NURS 6356 Primary Care in Community Health/Public Health Nursing IV: Care of Children and Adolescents**

[5 Credits] Focuses on assessment diagnosis, management, and education for common acute and chronic health problems of children and youth at various stages: infants, toddlers, preschool, school-age, and adolescent. Systematic appraisal of physical, social, development, family, and parenting skills are utilized in clinical management. Health promotion, nutrition, and education are emphasized. Evaluation strategies are employed to analyze ethical and legal situations. Clinical problems are analyzed and interpreted using an epidemiological approach to patient care management. Includes classroom and field experiences. Prerequisites: All support courses, NURS 6353, NURS 6354, NURS 6355

**NURS 6357 Primary Care in Community Health/Public Health Nursing V: Transitions to Advanced Nursing Practice**

[4 Credits] Focuses on the successful development and implementation of exemplars of practice that will prepare the beginning advanced practice nurse to meet the health care agenda for a healthy society through practice, education, and research. Concentrated time will be spent in the clinical setting appropriate to provide intensive study of a desired clinical specialty. Refinement of clinical expertise, establishment of role identity as an advanced practitioner of nursing, and development of a business plan are expected outcomes. Includes classroom and field experiences. Prerequisites: All support courses, NURS 6353, NURS 6354, NURS 6355, NURS 6356.

**NURS 6360 Curriculum Development in Undergraduate Nursing Education**

[3 Credits] Analyzes the theory and practice of curriculum development in associate and baccalaureate degree programs in nursing. Prerequisites: NURS 6305, and first practicum course.

**NURS 6361 Practicum in Undergraduate Nursing Education**

[3 Credits] Examines the role of faculty in the academic setting. Emphasis is placed on teaching in undergraduate nursing education. Includes classroom and field experiences. Prerequisites: NURS 6360 and first practicum course.

**NURS 6366 Advanced Practice Role in Case Management I**

[3 Credits] Focuses on nurse case management models for meeting the needs of vulnerable populations in a managed care environment. Nurse case management, i.e., developing, planning implementing cost-effective strategies and outcomes, as well as evaluation of outcomes are emphasized. Issues of design and implementation of nurse case management models in acute care, long-term care, and community-based settings are addressed. Case studies will be used to develop a case management plan. Legal and ethical issues are also explored.

**NURS 6367 Advanced Practice Role in Case Management II**

[3 Credits] Explores, tests and expands the nurse case management theories in organizational settings. Students will rotate through clinical areas and have first-hand experiences with case management. Course and field experiences include identifying outcomes through clinical practice experiences and partnership with patients and families over time and across settings, as well as through coordination of services, communication, and collaborative skills by using population-based guidelines.

**NURS 6368 Advanced Nursing Administration Concepts I**

[3 Credits] Focuses on the financial and budgetary concepts in health care delivery. Introduces the basic concepts of the budgeting process. Includes major issues of health care finance: Medicare, Medicaid, DRGs, managed care, capitation, productivity, and workload measurement. Requires development of a formulated budget. Includes classroom and field experiences. Prerequisite: NURS 6303. Prerequisite or Corequisite: NURS 6350.

**NURS 6369 Advanced Nursing Administration Concepts II**

[3 Credits] Examines major concepts of the executive nurses' role in nursing/health care administration. Includes professional standards of practice, professional development, and critical thinking. Various topics confronting the executive nurse such as mergers, acquisitions, reengineering, competency, disease management, health promotion and disease prevention and social issues are explored. Includes classroom and field experiences. Prerequisites: NURS 6303. Corequisite: NURS 6352.

**NURS 6381 Selected Topics in Nursing**

[2-3 Credits] The content of the course may vary each semester. A total of three semester hours may be applied toward the degree. Prerequisite: Consent of faculty member and the Department Head.

**NURS 6382 Ethical Issues in Nursing Practice**

[3 Credits] A seminar course designed to enhance the student's ability to describe and analyze ethical concepts foundational to nursing practice and utilize a variety of ethical decision-making frameworks to analyze ethical dilemmas in practice. The historical development of these concepts in the professional ethic will be presented and theories of bio-ethics and nursing ethics will be analyzed. Specific attention will be given to the advanced nursing practice competency of ethical decision making skills, and to nursing participation in institutional ethics committees. Students will apply elements of these concepts and principles of ethics to nursing practice utilizing case studies.

**NURS 6390 Thesis**

[3 Credits] Continuous registration is required for thesis. Credit is assigned when the thesis is accepted (see academic policy for thesis advisement). Prerequisite: NURS 6304.

**NURS 6392 Independent Study**

[3 Credits] Provides in depth individualized learning experiences compatible with the student's former experiential learning and future career goals. Prerequisite: Completion of nine semester hours in the graduate program.

**NURS 7301 Development of Nursing Knowledge**

[3 Credits] Examines the organization and structure of nursing knowledge and the relationship among science, theory, and nursing practice.

**NURS 7303 Design and Methodology for Quantitative Research**

[3 Credits] Focuses on quantitative design decisions related to studying clinical nursing problems. Prerequisite or Corequisite: BIOS 6222 Multivariate Statistics.

**NURS 7304 Measurement of Nursing Phenomena**

[3 Credits] Focuses on the measurement of variables related to clinical nursing problems. Includes the development, construction, and validation of qualitative and quantitative instruments for measuring nursing concepts/constructs. Prerequisite: NURS 7320, and BIOS 6222 Multivariate Statistics.

**NURS 7305 Design and Methodology for Qualitative Research**

[3 Credits] Focuses on qualitative design decisions related to studying clinical nursing problems.

**NURS 7306 Nursing and Health Policy**

[3 Credits] Explores issues surrounding the development, impact, and analysis of health care policy and its relationship to nursing care and health care delivery systems. Focuses on national, state, and local health policy as well as policy affecting various populations throughout the life cycle. A special emphasis will be an examination of policy with its particular emphasis on political dynamics, application of ethical principles and health services research.

**NURS 7307 Theory Development in Nursing**

[3 Credits] An exploration of the uses of theory in developing knowledge in the discipline of nursing with an emphasis on the linkage among various levels of theory and research. Prerequisite: NURS 7301.

**NURS 7320 Investigation of Nursing Phenomena I**

[3 Credits] Determines the state of knowledge in chosen areas of clinical practice or administration and investigates nursing phenomena. Includes seminar and fieldwork. Prerequisites: NURS 7301 and 7305. Prerequisite or Corequisite: NURS 7303.

**NURS 7321 Investigation of Nursing Phenomena II**

[3 Credits] Explores the investigation process focusing on validation of key concepts, analysis of methods of inquiry and related issues. Includes seminar and fieldwork. Prerequisite: NURS 7303, 7320, BIOS 6222. Prerequisite or Corequisite: NURS 7304.

**NURS 7322 Investigation of Nursing Phenomena III**

[3 Credits] Explores the proposal development process for the study of nursing phenomena. Students develop a research proposal for the study of a selected nursing phenomena.

Includes classroom and field experiences. Prerequisites: NURS 7304 and NURS 7321.

### **NURS 7364 Clinician as Consultant I**

[3 Credits] Focuses on theory based consultation, the consultation process, and the multifaceted role of the clinical nursing consultant. Prerequisite: NURS 7301.

### **NURS 7366 Clinician as Consultant II**

[3 Credits] Focuses on the practice of clinical nursing consultation in a variety of settings, relevant research, and evaluation of consultation interventions. Prerequisites: NURS 7320, 7364, and Multivariate Statistics. Prerequisite or Corequisite: NURS 7311.

### **NURS 7367 Clinician as Consultant III**

[3 Credits] Focuses on the consultation process and developing role skills of the consultant. Emphasis is on the concepts, theories, and research useful in consultation. Ethical dilemmas are analyzed. Prerequisite: NURS 7366.

### **NURS 7370 Graduate Nursing Education**

[3 Credits] Examines the nature of graduate education and its implications for contemporary nursing education. Prerequisites: NURS 6360, 6361, or consent of instructor; NURS 7301.

### **NURS 7371 Role of Graduate Faculty in the Academic Community**

[3 Credits] Explores various facets of the role of the nurse educator in graduate nursing education. Prerequisites: NURS 7320 and 7370 or consent of the instructor. Prerequisite or Corequisite: NURS 7311.

### **NURS 7372 Fieldwork in Graduate Nursing Education**

[3 Credits] Includes planned experiences in enacting roles of faculty in graduate nursing education. Includes classroom and field experience. Prerequisite: NURS 7371.

### **NURS 7381 Independent Research**

[3 Credits] Independent research under the supervision of a designated nursing graduate faculty member.

### **NURS 8000 Dissertation**

[6 Credits] A contribution to knowledge in nursing. Demonstrates independent critical thought and mastery of research techniques.

### **NURS 8301 Integrated Anatomy, Physiology, and Pathophysiology for Nurse Anesthesia I**

[4 Credits] Examines the anatomy and physiology of the cell, muscle, cardiovascular, and pulmonary systems. Serves as a basis for examining the pathophysiology and anesthesia implications of these systems. Mechanisms of the manifestations of selected disease states are explored. Anesthesia implications of patients with these disease states are emphasized. Prerequisite: Admission to Nursing Anesthesia Program.

### **NURS 8302 Integrated Anatomy, Physiology, and Pathophysiology for Nurse Anesthesia II.**

[3 Credits] Examines the anatomy and physiology of endocrine and nervous systems. This serves as a basis for examining the pathophysiology and anesthesia implications of these systems. Mechanisms of the manifestations of selected disease states are explored. Anesthesia implications of patients with these disease states are emphasized. Prerequisite: NURS 8301.

### **NURS 8303 Integrated Anatomy, Physiology, and Pathophysiology for Nurse Anesthesia III**

[3 Credits] Examines the anatomy and physiology of the gastrointestinal, hepatic, renal, and genitourinary systems. This serves as a basis for examining the pathophysiology and anesthesia implications of these systems. Mechanisms of the manifestations of selected disease states are explored. Anesthesia implications of patients with these disease states are emphasized. Prerequisite: NURS 8301.

### **NURS 8307 Advanced Pharmacology for the Nurse Anesthesia**

[5 Credits] Examines the uptake, distribution, biotransformation, and excretion of anesthetic agents, neuromuscular blocking agents, and accessory drugs used in anesthesia. Mechanisms of action, characteristic drug effects, factors modifying drug effects, toxicity, and indications and contraindications for use are emphasized. The effects of anesthetics on homeostatic functions are stressed. Prerequisites: Admission to Nurse Anesthesia Program, HSLC 6409 Corequisites: NURS 8301.

### **NURS 8310 Basic Principles of Anesthesia**

[4 Credits] Consists of selected topics addressing the administration and supportive care required for general anesthesia. Assessment, monitored anesthesia care, induction, and maintenance of general anesthesia and complications of anesthesia are included. Pre- and post-anesthesia care are also emphasized. Concepts relative to physics of gas machines are examined. Infection control principles are incorporated. Prerequisite: Admission to Nurse Anesthesia Program, HLSC 6409.

### **NURS 8311 Advanced Principles of Anesthesia**

[3 Credits] Consists of selected topics addressing the administrative supportive care required for regional and local anesthesia techniques. Assessment, monitored anesthesia care, induction, and maintenance of anesthesia and complications of anesthesia are included. Pre- and post-anesthesia care relative to regional and local anesthesia techniques are also emphasized. Prerequisites: NURS 8301.

### **NURS 8320 Nurse Anesthesia Clinical Practicum I**

[4 Credits] Introduces the specialty of nurse anesthesia and focuses on the development of basic skills that prepares the student in the anesthesia management of patients undergoing a variety of surgical and/or diagnostic procedures. Preparation of patients and equipment, pre and postoperative patient evaluation, planning and implementing individualized anesthesia care plan; non-invasive and invasive monitoring, pain management, and airway management are emphasized. Includes classroom and field experiences. Prerequisites or Corequisites: NURS 8301, NURS 8307, NURS 8310.

### **NURS 8321 Nurse Anesthesia Clinical Practicum II**

[10 Credits] Continues with the development of skills that prepares the student in the anesthesia management of patients undergoing a variety of surgical and/or diagnostic procedures. Preparation of patients and equipment, pre- and postoperative patient evaluation, planning and implementing individualized anesthesia care plans for patients is emphasized. One hour of clinical conference per week is devoted to the discussion of anesthesia issues and problems encountered in the clinical practicum. Prerequisite: NURS 8320.

### **NURS 8322 Nurse Anesthesia Clinical Practicum III**

[11 Credits] Continues with the development of skills that prepares the student in the anesthesia management of patients undergoing a variety of surgical and/or diagnostic

procedures with an emphasis on neonates and pediatric patients. Preparation of patients and equipment, pre- and postoperative patient evaluation, planning and implementing individualized anesthesia care plans for patients is emphasized. One hour of clinical conference per week is devoted to the discussion of anesthesia issues and problems encountered in the clinical practicum. Prerequisite: NURS 8321.

#### **NURS 8323 Nurse Anesthesia Clinical Practicum IV**

[11 Credits] Continues with the development of anesthesia skills that prepares the student in the anesthesia management of patients undergoing a variety of surgical and/or diagnostic procedures with an emphasis on increasingly complex surgical procedures. Preparation of patient and equipment, pre- and postoperative patient evaluation, planning and implementing individualized anesthesia care plans for patient is emphasized. One hour of clinical conference per week is devoted to the discussion of anesthesia issues and problems encountered in the clinical practicum. Prerequisite: NURS 8322.

#### **NURS 8324 Nurse Anesthesia Clinical Practicum V**

[12 Credits] Continues with the development of anesthesia skills that prepares the student in the anesthesia management of patients undergoing a variety of surgical and/or diagnostic procedures with an emphasis on obstetrical procedures. Preparation of patient and equipment, pre- and postoperative patient evaluation, planning and implementing individualized anesthesia care plans for patient is emphasized. One hour of clinical conference per week is devoted to the discussion of anesthesia issues and problems encountered in the clinical practicum. Prerequisite: NURS 8323.

#### **NURS 8325 Nurse Anesthesia Clinical Practicum VI**

[12 Credits] Continues with the development of anesthesia skills that prepares the student in the anesthesia management of patients undergoing a variety of surgical and/or diagnostic procedures with an emphasis on unusual surgical procedures. Preparation of patient and equipment, pre- and postoperative patient evaluation, planning and implementing individualized anesthesia care plans for patient is emphasized. One hour of clinical conference per week is devoted to the discussion of anesthesia issues and problems encountered in the clinical practicum. Prerequisite: NURS 8324.

#### **NURS 8326 Nurse Anesthesia Clinical Practicum VII**

[12 Credits] Continues with the development of anesthesia skills that prepares the student in the anesthesia management of patients undergoing a variety of surgical and/or diagnostic procedures. This capstone course of the anesthesia program is designed for development of increased skill, competence, and confidence in the preparation of patient and equipment, pre- and postoperative patient evaluation, and planning and implementing individualized anesthesia care plans for patient is emphasized. One hour of clinical conference per week is devoted to the discussion of anesthesia issues and problems encountered in the clinical practicum. Prerequisite: NURS 8325.

## **Pathology**

#### **PATH 210 Introduction to Epidemiology**

[3 Credits] Required for Advanced Public Health Students only. Basic introductory level course designed for students with little or no background in epidemiology. Lectures and

discussion exercises will be used to aid the student in understanding what epidemiology is and how it serves as a basic science for public health and preventive medicine. Prerequisite: BIOS 6221.

## **Psychology**

#### **PSCH 2009 Human Behavior and Development Throughout the Life Span**

[3 Credits] Human behavior and development are studied from birth to death as the product of the interactions of biosocial, psychosocial, and cognitive factors. Special emphasis on the concepts, theories, and methods of assessing normal development and its organization into individualized and age appropriate patterns of behavior. In addition to following the normal processes and resolutions of maturational events, selected situational crises common to large segments of the population and specific cultures are examined and discussed. 3 hours lecture. Prerequisite: General Psychology.

#### **PSCH 3044 Introduction to Abnormal Psychology**

[3 Credits] An introduction to personality maladjustment and mental disorder. 3 hours lecture. Prerequisites: General Psychology and Psychology 2009.

#### **PSCH 6101 Fundamentals for Applied Development Psych I**

[3 Credits] This course is taught by the University of New Orleans as PSYC 6101.

#### **PSCH 6400 Social Psychology**

[3 Credits] This course is taught by the University of New Orleans as PSYC 6400.

#### **PSCH 6801 Fundamentals of Applied Biopsychology I**

[3 Credits] This course is taught by the University of New Orleans as PSYC 6801.

## **Social Work**

#### **SW 4070 International Nursing: Comparative Health Delivery Systems**

[3 Credits] This course is an introduction to nursing abroad. The goal is to develop the student's awareness of nursing in a native culture and compare healthcare delivery systems and the impact those systems have on nursing practice. Prerequisites: None.



## FACULTY ROSTER

### EMERITI

DUNN, HELEN A., DrPH, Tulane University, 1974  
*Dean Emeritus*

McKEVIT, MARGARET, MSN, University of Colorado, 1962  
*Emeritus Director of the Baccalaureate Program*

SNOWDEN, MYRTIS, DrPH, Tulane University, 1974  
*Emeritus Professor of Nursing*

DONLON, BARBARA, EdD, University of Southern Mississippi,  
1993  
*Emeritus Professor of Nursing*

---

ADELSBERG, BONNIE, MN, LSU Medical Center, 1976  
*Adjunct Assistant Professor of Nursing*

BARNES, REBECCA, MSN, University of South Alabama, 1998  
*Adjunct Assistant Professor of Nursing*

BARROW, RICK, BSN, Murray State University, 1978  
*Adjunct Assistant Professor of Nursing*

BEARE, PATRICIA G., PhD, North Texas State University,  
1978  
*Professor of Nursing*

BONANNO, LAURA, MS, Xavier University of Louisiana, 1995  
*Clinical Instructor of Nursing*

BRENNAN, CHRISTINE S., MSN, University of Pennsylvania,  
1989  
*Adjunct Instructor of Nursing*

BROUILLETTE, CHARLENE, MS, Xavier University of Louisiana,  
1989  
*Instructor of Nursing*

BROWN, LINDA, MSN, University of Phoenix, 1998  
*Instructor of Nursing*

BUCCOLA, NANCY, MSN, Duke University, 1977  
*Assistant Professor of Clinical Nursing*

BUSTAMANTE-FOREST, ROSA, MPH, Tulane University, 1980  
MN, LSU Medical Center, 1983  
*Assistant Professor of Clinical Nursing*

BYERLY, ANN H., MPH, Tulane University, 1983  
*Assistant Professor of Clinical Nursing*

CARTER, CELESTINE, DNS, LSU Health Sciences Center, 2000  
*Assistant Professor of Nursing*

CLAYMEN, ANDREA, MN, Seton Hall University at South  
Orange, NJ, 1986  
*Clinical Assistant Professor of Nursing*

COCO, CHARLENE D., MN, LSU Medical Center, 1981  
*Assistant Professor of Clinical Nursing*

COUVILLON, JENNIFER, PhD, Duquesne University, 2003  
*Assistant Professor of Nursing*

DAVIS, LAUREN, MSN, University of Texas Health Science  
Center at San Antonio, 1984  
*Clinical Instructor of Nursing*

DOUGLAS, DIANNA, DNS, LSU Medical Center, 1993  
*Associate Professor of Nursing*

FAVRET, JACQUELINE O., MPH, Tulane University, 1978  
*Assistant Professor of Clinical Nursing*

---

## LSU Health Sciences Center in New Orleans School of Nursing

---

- FERGUSON, LAURIE, MSN, University of Pennsylvania, 1984  
*Assistant Professor of Clinical Nursing*
- FLOYD, LINDA, PhD, Louisiana State University, 1975  
*Clinical Assistant Professor of Nursing*
- GANT, KAREN, MSN, Southern University at Baton Rouge, 1996  
*Instructor of Nursing*
- GARBEE, DEBORAH D., MN, LSU Medical Center, 1998  
*Instructor of Nursing*
- GEISZ-EVERSON, MARJORIE, MSNA, Xavier University of New Orleans, 1994  
*Instructor of Nursing*
- GENTRY, JUDITH A., MSN, University of Alabama, 1984  
*Assistant Professor of Clinical Nursing*
- GIARRATANO, GLORIA P., PhD, Georgia State University, 2000  
*Associate Professor of Nursing*
- HALL, STANLEY, MD, Louisiana State Medical Center, 1978  
PhD, Louisiana State Medical Center, 1983  
*Assistant Professor of Clinical Nursing*
- HASLAUER, MARIA, M.S.N., University of Texas at Austin, 1978  
*Clinical Assistant Professor of Nursing*
- HUMPHREY, ELIZABETH A., EdD, University of Southern Mississippi, 1977  
*Professor of Nursing*
- JEANFREAU, SCHARALDA – DNS, LSU Medical Center, 1995  
*Instructor of Nursing, 2005*
- JEFFERSON, ANNOINETTE M., MSN, Loyola of New Orleans, 2003  
*Instructor of Nursing*
- KAPPEL, SHARON, MN, LSU Medical Center, 1988  
*Instructor of Nursing*
- KEARNEY, BARBARA Y., MEd, Loyola University (Louisiana), 1973, MS, University of Southern Mississippi, 1978  
*Associate Professor of Nursing*
- KIMBALL, PATRICIA W., MN, LSU Medical Center, 1976  
*Assistant Professor of Nursing*
- KING, GRACE, MSN, University of Phoenix, 1998  
*Clinical Instructor of Nursing*
- KIRKHART, KATHRYN A., PhD, Kent State University, 1982  
*Clinical Assistant Professor of Nursing*
- KRAUS, MARJORIE B., MSN, Texas Women University, 1977  
*Assistant Professor of Clinical Nursing*
- KUPER, BARBARA CARUSO, MN, LSU Medical Center, 1986  
*Assistant Professor of Clinical Nursing*
- LANE, PATRICIA L., PhD, University of Texas at Austin, 1986  
*Professor of Nursing*
- LANGER, CHRISTINE, MS, University of Utah, 1998  
*Instructor of Nursing*
- LANGFORD, CYNTHIA, PhD, Peabody College, Vanderbilt University 1984  
*Associate Professor of Nursing*
- LEGARDEUR, BARBARA, MPH, Tulane University, 1976  
*Clinical Assistant Professor of Nursing*
- LOPEZ, KAY A., DSN, University of Alabama, Birmingham, 1995  
*Associate Professor of Nursing*
- MACK, RUTH – MN, LSU Medical Center, 1984  
*Assistant Professor of Clinical Nursing*
- MOISIEWICZ, KATHLEEN A., PhD, University of New Orleans, 2002  
*Assistant Professor of Clinical Nursing*
- MORGAN, CONNIE, MS, University of Southern Mississippi, 1984  
*Assistant Professor of Clinical Nursing*
- MOSLEY, CAROLYN, PhD, Texas Woman's University, 1994  
*Professor of Nursing*
- NAVARRE, SUSAN, DNS, LSU Medical Center, 2005  
*Instructor of Clinical Nursing*
- ORLANDO, SUSAN, MS, University of Colorado, 1978  
*Clinical Assistant Professor*
- PIERCE, STEPHANIE, MN, LSU Health Sciences Center, 1999  
*Instructor of Nursing*
- POLLOCK, CHRISTINE A., PhD, University of New Orleans, 1992  
*Associate Professor of Clinical Nursing*
- PORCHE, DEMETRIUS, DNS, LSU Medical Center, 1995  
*Associate Professor of Nursing*
- PORTER, NORMA, MN, LSU Medical Center, 1996  
*Clinical Instructor in Nursing*
- PRESSLEY-BYRD, DOLLY, MSN, CNM, Yale University, 2001  
*Instructor of Nursing*
- RHOADS, JACQUELINE, PhD, University of Texas at Austin, 1984  
*Professor of Nursing*
- RICK, SUSAN S., DNS, LSU Health Sciences Center, 1999  
*Associate Professor of Nursing*
- RUEL, SALLY, MN, University of Phoenix, 2003  
*Instructor of Nursing*
- SAVAGE, JANE, PhD, University of New Orleans, 2005  
*Assistant Professor of Clinical Nursing*
- SCHALLER, JERILYN, MN, LSU Medical Center, 1985  
*Assistant Professor of Clinical Nursing*
- SCHWARTZ, HANNAH, MN, LSU Medical Center, 1984  
*Clinical Instructor of Nursing*
- SILADY, KAREN, MN, LSU Medical Center, 1995  
*Assistant Professor of Clinical Nursing*
- SPIVEY, ELIZABETH, MN, University of Mississippi, 1977  
*Assistant Professor of Nursing*
- STERLING, YVONNE M., DNSc, Catholic University of America, 1985  
*Professor of Nursing*
- ST. GERMAIN, DEBORAH, MN, LSU Medical Center, 1990  
*Assistant Professor of Clinical Nursing*
- SUMNER, JANE F, PhD, University of New Orleans, 2002  
*Associate Professor of Nursing*
- TARCZA, LAURA, MSN, Texas Woman's University, 1986  
*Assistant Professor of Clinical Nursing*
- TENNYSON, MARGARET G., DSN, University of Alabama at Birmingham, 1991  
*Professor of Nursing*
- TERRY-DAVIS, DENEEN, MN, University of Phoenix, 2001  
*Clinical Instructor*
- THOMAS, FRANCINE C., MN, LSU Medical Center, 1994  
*Assistant Professor of Clinical Nursing*
- TOMLINSON, DONNA, BSN, University of Southwestern, Louisiana, 1978, MN, LSUHSC, May 2004  
*Instructor of Nursing*

TORTORICH, SUSAN C., MS, University of Boston College,  
1990  
*Clinical Instructor of Nursing*

TROSCLAIR, TROY – DNS, LSU Health Sciences Center, 2003  
*Clinical Assistant Professor of Nursing*

TROY, ANNE, MN, LSU Medical Center, 1993  
*Assistant Professor of Clinical Nursing*

VAUGHN, VALECIA, MSN, University of South Alabama, 1996  
*Instructor of Nursing*

WAGUESPACK, FRANCES, MSN, University of Phoenix, 2003  
*Clinical Instructor of Nursing*

WAGUESPACK, SANDRA, MSN, University of Southern  
Mississippi, 1988  
*Instructor of Nursing*

WASHINGTON, SONJA, MN, LSU Health Sciences Center,  
1999  
*Instructor of Nursing*

WHITE-WILLIAMS, ANGELIQUE, DNS, LSU Health Sciences  
Center, 2005  
*Instructor of Nursing*

WHITLEY, EVELYN, MSN, University of Phoenix, 2001  
*Instructor of Nursing*

WREN, KATHLEEN, PhD, University of Nebraska, 1998  
*Assistant Professor of Nursing*

WREN, TIMOTHY, MS, Rush University, 1985  
*Assistant Professor of Clinical Nursing*

## RECAPITULATION OF FACULTY

PROFESSOR: Beare; Humphrey; Lane; Mosley; Porche;  
Rhoads; Sterling; Tennyson

ASSOCIATE PROFESSOR: Douglas; Giarrantano; Kearney;  
Langford; Lopez; Pollock; Rick; Sumner

ASSISTANT PROFESSOR: Adelsberg; Barrow; Buccola;  
Bustamante-Forest; Byerly; Carter; Clayman; Coco;  
Couvillon; Favret; Floyd; Gentry; Hall; Haslauer;  
Kimball; Kirkhart; Kraus; Kuper; Legardeur; Moisiejewicz;  
Morgan; Savage; Schaller; Spivey; St. Germain; Tarcza;  
Thomas; Torsclair; Troy; Wren; Wren

INSTRUCTOR: Bonanno; Brennan; Brouillette; Brown; Davis;  
Gant; Garbee; Geisz-Everson; Jeanfreau; Jefferson;  
Kappel; King; Mack; Navarre; Langer; Pierce; Porter;  
Ruel; Schwartz; Silady; Terry-Davis; Tomlinson;  
Tortorich; Vaughn; Waguespack; Washington; White-  
Williams; Whitley

