

LSUHSC – New Orleans Library Resources for ENT Residents & Interns

August 2010

Kathy Kerdolff, MLIS, AHIP
Reference Librarian
Liaison – School of Medicine

kkerdo@lsuhsc.edu
(504) 568-6102
reference@lsuhsc.edu

Session Objectives

Practice-Based Learning & Improvement

- Recognize available resources
 - Access resources remotely
- Select appropriate resources to locate scientific studies related to patient care
- Use information technology to conduct scholarly activities (research)

Library Web Page

<http://www.lsuhscc.edu/no/library/>

The screenshot shows the website's navigation menu and main content area. Red arrows highlight the 'Library Information' section, the 'Library Resources' section, and the 'Help / Live Chat' link.

LSU Health Sciences Center
NEW ORLEANS

Libraries

Library Information
Spring 2010 Newsletter

Isché Library (Main) →
433 Bolivar St.
New Orleans, LA 70112
Circulation Desk: 504-568-6100
[Directions](#) [Policies](#)
[Floor Plans](#) [Staff Listing](#)
[Hours](#)

Dental Library
1100 Florida Ave.
New Orleans, LA 70119
504-941-8158

Site Index

Library Resources

INNOPAC: Books & Journals owned by LSUHSC-NO

PubMed: Free MEDLINE (journal articles) from.nlm

EBSCOhost: MEDLINE, CINAHL Plus, Biological Abstracts, and more

Electronic Journals List: Titles both in INNOPAC and out-of-scope from consortial resources & [Tutorial](#) (MMV)

Online Resources: Databases & Search Systems

Current Protocols: 7 lab protocol titles

Digital Collections: LSUHSC & LSUSD history, digital graduation programs

Resource Guides: Subject & Course Specific Research Aids

Library Services

[Circulation](#)

Help / Live Chat ←

[ILLiad - Interlibrary Loan](#)

[Links](#)

PDA/Smartphone Resources

[Mobile Isché](#) (for smaller screens)

Reference

[Upcoming Classes](#)

[Off campus Access](#)

RefWorks

Wireless Instructions

Library Blog

[An Odyssey of Knowledge](#)
by Kwasik, Hanna - Jul 12, 2010
The Exhibition Program of the National Library of Medicine produced a new online exhibit, An Odyssey of Knowledge,
[LSUHSC NO Libraries News](#)

Library Web Page

<http://www.lsuhscc.edu/no/library/>

- [INNOPAC – Library Catalog](#)
- [Electronic Journals List](#)
- [Online Resources](#)
- [ILLiad - Interlibrary Loan \(ILL\)](#)
- [Off Campus Access](#)

Library Web Page

<http://www.lsuhscc.edu/no/library/>

- [INNOPAC – Library Catalog](#)
 - What we have (In library & access to)
 - Books & Journals
 - Electronic & Print
 - [Bailey,BJ; Head and Neck Surgery, 4th ed. 2006](#)
- [Selected Bibliography](#)

Library Web Page

<http://www.lsuhscc.edu/no/library/>

- Electronic Journals List
 - Search by Journal Title
 - Search by Word in Journal Title

Library Web Page

<http://www.lsuhscenter.edu/no/library/>

- Online Resources
 - A to Z list

Library Web Page

<http://www.lsuhscc.edu/no/library/>

- ILLiad - Interlibrary Loan (ILL)
 - What we don't have
 - We can get
- **NO DOCUMENT DELIVERY at this time**

Off Campus Access

- Library Registration Required (barcode)
 - Name (Last, First)
Example: **Tiger, Mike**
 - Barcode (no spaces)
 - PIN (4-6 letters and/or numbers)
PIN will not change

Search for Journal Articles & Primary Research Studies

- [PubMed](#)
- [EMBASE.com](#)
- [SCOPUS](#)
- [Web of Science](#)

PubMed

National
Library
of Medicine 



EMBASE.com

SCOPUS

ISI Web of KnowledgeSM

PubMed

- Limits
- **Advanced Search**
 - Display Settings
 - Send to

EMBASE.com

- Journal articles (Similar to PubMed)
 - More pharmacology
 - More foreign language
 - Includes MEDLINE
 - Uses SINGULAR headings (EMTREE)

SCOPUS

- Research
- Author analysis
- Affiliation searching
- Direct export to RefWorks

Web of Knowledge

- Web of Science
 - Index includes conference abstracts
- Endnote Web
- Journal Citation Reports
- ResearcherID

Evidence Based Resources (Short Cuts)

- [Cochrane Library](#)
- [DynaMed](#)
- [Natural Standard](#)
- [Stat!Ref](#) – ACP-Pier



Cochrane Library

- Evidence-Based Systematic Reviews

DynaMed

- Evidence-based point of care
 - Mobile access
 - Requires Serial Number obtained from library

Natural Standard

- Complementary & Alternative Therapies

Stat!Ref

- ACP (American College of Physicians)
 - PIER
 - Journal Club
 - Medicine
- Stedman's medical dictionary

Full Text Textbooks

- [AccessEmergencyMedicine](#)
- [AccessMedicine](#)
- [AccessSurgery](#)

- [MDConsult](#)
- [R2 Digital Library](#)

- [Stat!Ref](#)

- [Thieme](#)



MDConsult



STAT!Ref



AccessMedicine

- WillHarrison's Online
 - Self-Assessment & Board Review
- CURRENT Medical Diagnosis & Treatment

AccessEmergencyMedicine

- Procedures
- TextBooks - online
- Videos & Drugs

AccessSurgery

- Core Curriculum
- Procedures/Operations
- Textbooks - online
- Differential Diagnosis (DDX)
- Board Review

MDConsult

- Medical Reference Books
- *Clinics of North America*
- Drug Information: from Gold Standard
- Access MDConsult using LSUHSC ID & Password (email account)

R2 Digital Library

- Current Occupational & Environmental Medicine
 - *Prenatal diagnosis*

Stat!Ref

- Search within Texts
- Resources:
 - Stedman's medical dictionary
 - MedCalc 3000

Thieme E-Books

- Atlases
 - Color Atlas of Physiology
- Download whole book

Other Resources

- MICROMEDEX
- MedlinePlus



MICROMEDEX[®] Healthcare Series



MICROMEDEX

- Drugs
- Drug interactions
- Dosing tools

MedlinePlus

- Consumer health information
 - Up-to-date
 - Authoritative
 - No advertizing pop-ups
- Dictionary (Websters)
 - Audio pronounciation

Board Exams/Study Resources

- [AccessMedicine](#)
 - Board Review Plus
- [Exam Master](#)
 - Internal & Clinical Medicine
- Create Individual Log-ins

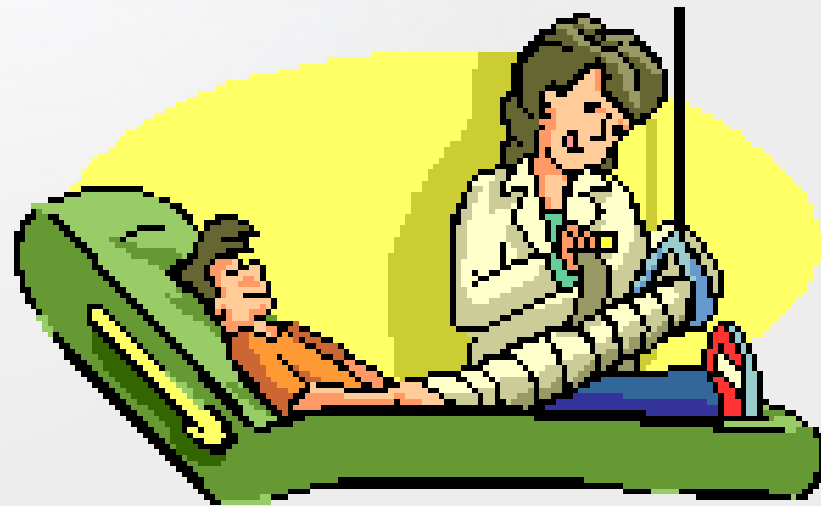
The screenshot shows the website for the John P. Isché Library at the Louisiana State University School of Medicine. The page features the LSU Health Sciences Center logo and the text "SCHOOL OF MEDICINE AT NEW ORLEANS". The main heading is "Louisiana State University School of Medicine". Below this, it says "John P. Isché Library" and "EXAM MASTER OnLine™". The page is for "USMLE and Medical Specialty Board Exams" and includes the quote "If you can do EXAM MASTER, you can do the boards." There is a "CLICK to start" button and a "Registered Entry page" link. At the bottom, it says "BOOKMARK THIS PAGE ONLY ...to regain access later".

Bibliography Sources

- [RefWorks](#)
- EndNote Web
 - Via [Web of Knowledge](#)
- Individual Log-in required

Reference Librarians

- 8 am - 8 pm (Mon - Thurs)
- Friday 8 am – 5 pm
- **Telephone:** (504) 568-6102
- **Live Chat:** Library webpage
- **Email:** reference@lsuhsc.edu



Thank you