

LSUHSC – New Orleans Library Resources for OB/GYN Residents & Interns

Tuesday, June 28, 2011

Kathy Kerdolff, MLIS, AHIP
Reference Librarian
Liaison – School of Medicine

kkerdo@lsuhsc.edu
(504) 568-6102
reference@lsuhsc.edu

Session Objectives

Practice-Based Learning & Improvement

- Recognize available resources
 - Access resources remotely
- Select appropriate resources to locate scientific studies related to patient care
- Use information technology to conduct scholarly activities (research)

Library Web Page

<http://www.lsuhsoc.edu/no/library/>

The screenshot shows the website's navigation menu and main content area. Red arrows highlight the following elements:

- Library Resources**: A red arrow points to the "Library Resources" section, which includes links for **INNOPAC**, **PubMed** (marked as "New!"), **EBSCOhost**, **Electronic Journals List**, **Online Resources**, **Current Protocols**, **Digital Collections**, and **Resource Guides**.
- Library Information**: A red arrow points to the "Library Information" section, which includes a newsletter link and details for the **Isché Library** (Main Branch) and **Dental Library**.
- Library Services**: A red arrow points to the "Library Services" section, which includes links for **Circulation**, **Help / Live Chat**, **ILLiad**, **Links**, **PDA Resources**, **Reference**, **RefWorks**, and **Wireless Instructions**.

Other visible content includes the "Other Campus Resources" section with links to Moodle, PayPaw, WebMail, Blackboard, and Residency Partner, and a "Library Blog" section with a post about the Library Commons award.

Library Web Page

<http://www.lsuhscc.edu/no/library/>

- [Off Campus Access](#)
- [INNOPAC – Library Catalog](#)
- [Electronic Journals List](#)
- [Online Resources](#)
- [ILLiad - Interlibrary Loan \(ILL\)](#)

Off Campus Access

- Library Registration Required (barcode)

Name (Last, First)

Example: **Tiger, Mike**

- Barcode (no spaces)
- PIN (6 letters and numbers)
 - Must include both letters & numbers

Library Web Page

<http://www.lsuhscenter.edu/no/library/>

- INNOPAC – Library Catalog
 - What we have (In library & access to)
 - Books & Journals
 - Electronic & Print

Library Web Page

<http://www.lsuhscc.edu/no/library/>

- Electronic Journals List
 - Search by Journal Title
 - Search by Word in Journal Title

Library Web Page

<http://www.lsuhscc.edu/no/library/>

- Online Resources
 - A to Z list

Library Web Page

<http://www.lsuhscc.edu/no/library/>

- ILLiad - Interlibrary Loan (ILL)
 - What we don't have
 - We can get
 - Email with link to document
 - Link available for 30 days

Search for Journal Articles & Primary Research Studies

- [PubMed](#)
- [EMBASE.com](#)
- [SCOPUS](#)
- [Web of Science](#)

PubMed

National
Library
of Medicine 



EMBASE.com

SCOPUS

ISI Web of KnowledgeSM

PubMed

- Limits
- **Advanced Search**
 - Display Settings
 - Send to

EMBASE.com

- Journal articles (Similar to PubMed)
 - More pharmacology
 - More foreign language
 - Includes MEDLINE
 - Uses SINGULAR headings (EMTREE)

SCOPUS

- Research
- Author analysis
- Affiliation searching
- Direct export to RefWorks

Web of Knowledge

- Web of Science
 - Index includes conference abstracts
- Endnote Web
- Journal Citation Reports
- ResearcherID

Evidence Based Medicine Resources

- [Cochrane Library](#)
- [DynaMed](#)
- [Natural Standard](#)
- [Stat!Ref](#) – (ACP Pier)

Cochrane Library

- Evidence-Based Systematic Reviews

DynaMed

- Evidence-based point of care
 - Mobile access
 - Requires Serial Number obtained from library

Natural Standard

- Complementary & Alternative Therapies

Stat!Ref

- ACP (American College of Physicians)
 - PIER
 - Journal Club
 - Medicine
- Stedman's medical dictionary

Full Text Textbooks

- [AccessEmergencyMedicine](#)
- [AccessMedicine](#)
- [AccessSurgery](#)
- [MDConsult](#)
- [R2 Digital Library](#)
- [Stat!Ref](#)
- [Thieme](#)



MDConsult



STAT!Ref



AccessMedicine

- William's Obstetrics
 - Self-Assessment
- Harrison's Online
 - Self-Assessment & Board Review
- CURRENT Medical Diagnosis & Treatment
 - Obstetrics & Gynecology

AccessEmergencyMedicine

- Procedures
- TextBooks - online
- Videos & Drugs

AccessSurgery

- Core Curriculum
- Procedures/Operations
- Textbooks - online
- Differential Diagnosis (DDX)
- Board Review

MDConsult

- Medical Reference Books
- *Clinics of North America*
- Drug Information: from Gold Standard
- Access MDConsult using LSUHSC ID & Password (email account)

R2 Digital Library

- Current Occupational & Environmental Medicine
 - *Prenatal diagnosis*

Stat!Ref

- Search within Texts
- Resources:
 - Stedman's medical dictionary
 - MedCalc 3000

Thieme E-Books

- Atlases
 - Color Atlas of Physiology
 - Hormones and Reproduction
- Download whole book

Other Resources

- MICROMEDEX
- MedlinePlus



MICROMEDEX[®] Healthcare Series



MICROMEDEX

- Drugs
- Drug interactions
- Dosing tools
- Mobile access

MedlinePlus

- Consumer health information
 - Up-to-date
 - Authoritative
 - No advertizing pop-ups
- Dictionary (Websters)
 - Audio pronounciation

Board Exams/Study Resources

- [AccessMedicine](#)
 - Board Review Plus
- [Exam Master](#)
 - Internal & Clinical Medicine
- Create Individual Log-ins

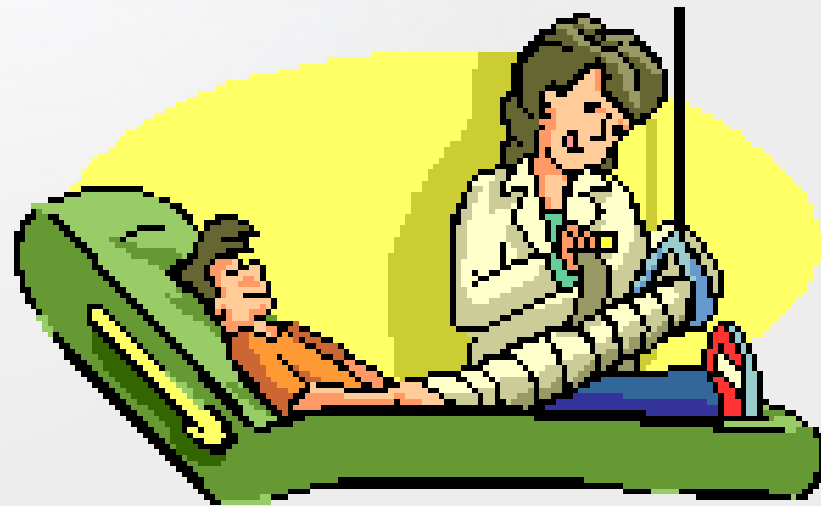
The screenshot shows the website for the John P. Isché Library's EXAM MASTER OnLine™ service. At the top, it features the LSU Health Sciences Center logo and the text 'SCHOOL OF MEDICINE AT NEW ORLEANS'. Below this is the 'Louisiana State University School of Medicine' logo, which includes a caduceus symbol. The main heading is 'John P. Isché Library'. The service is titled 'EXAM MASTER OnLine™' and is described as 'USMLE and Medical Specialty Board Exams'. A quote reads: 'If you can do EXAM MASTER, you can do the boards.' At the bottom, there is a 'Registered Entry page' link and a 'CLICK to start' button. A footer note says 'BOOKMARK THIS PAGE ONLY ...to regain access later'.

Bibliography Sources

- [RefWorks](#)
- EndNote Web
 - Via [Web of Knowledge](#)
- Individual Log-in required

Reference Librarians

- 8 am - 8 pm (Mon - Thurs)
- Friday 8 am – 5 pm
- **Telephone:** (504) 568-6102
- **Live Chat:** Library webpage
- **Email:** reference@lsuhsc.edu



Thank you