

# LSUHSC – New Orleans Library Resources for Family Medicine Residents & Interns

Bogalusa, LA July 2010

Kathy Kerdolff, MLIS, AHIP  
Reference Librarian  
Liaison – School of Medicine

[kkerdo@lsuhsc.edu](mailto:kkerdo@lsuhsc.edu)  
(504) 568-6102  
reference@lsuhsc.edu

# Session Objectives

## Practice-Based Learning & Improvement

- Recognize available resources
  - Access resources remotely
- Select appropriate resources to locate scientific studies related to patient care
- Use information technology to conduct scholarly activities (research)

# Library Web Page

<http://www.lsuhscc.edu/no/library/>

**LSU Health Sciences Center**  
NEW ORLEANS

**Libraries**

**Library Resources**  
**INNOPAC:** Books & Journals owned by LSUHSC-NO  
**PubMed:** Free MEDLINE (journal articles) from NLM  
**EBSCOhost:** MEDLINE, CINAHL Plus, Biological Abstracts, and more  
**Electronic Journals List:** Titles both in INNOPAC and out-of-scope from consortial resources & [Tutorial \(MMV\)](#)  
**Online Resources:** Databases & Search Systems  
**Current Protocols:** 7 lab protocol titles  
**Digital Collections:** LSUHSC & LSUSD history, digital graduation programs  
**Resource Guides:** Subject & Course Specific Research Aids

**Library Services**  
[Circulation](#)  
**Help / Live Chat**  
[ILLiad - Interlibrary Loan](#)  
[Links](#)  
**PDA/Smartphone Resources**  
[Mobile Isché](#) (for smaller screens)  
**Reference**  
[Upcoming Classes](#)  
[Off campus Access](#)  
**RefWorks**  
**Wireless Instructions**

**Library Information**  
[Spring 2010 Newsletter](#)

**Isché Library** (Main)  
 433 Bolivar St.  
 New Orleans, LA 70112  
 Circulation Desk: 504-568-6100  
[Directions](#) [Policies](#)  
[Floor Plans](#) [Staff Listing](#)  
[Hours](#)

**Dental Library**  
 1100 Florida Ave.  
 New Orleans, LA 70119  
 504-941-8158

**Site Index**

**Other Campus Resources**  
[Moodle](#) [Pay Paw](#) [WebMail](#)  
[Residency Partner](#)

**Library Blog**  
**An Odyssey of Knowledge**  
 by Kwasik, Hanna - Jul 12, 2010  
 The Exhibition Program of the National Library of Medicine produced a new online exhibit, An Odyssey of Knowledge,  
[LSUHSC NO Libraries News](#)

# Library Web Page

<http://www.lsuhscc.edu/no/library/>

- [Off Campus Access](#)
- [INNOPAC – Library Catalog](#)
- [Electronic Journals List](#)
- [Online Resources](#)
- [ILLiad - Interlibrary Loan \(ILL\)](#)

# Off Campus Access

- Library Registration Required (barcode)
  - Name (Last, First)  
Example: **Tiger, Mike**
  - Barcode (no spaces)
  - PIN (4-6 letters and/or numbers)  
**PIN will not change**

# Library Web Page

<http://www.lsuhscc.edu/no/library/>

- [INNOPAC – Library Catalog](#)
  - What we have (In library & access to)
    - Books & Journals
    - Electronic & Print
  - [Textbook of family medicine](#). Rakel; 2007: MDConsult.
- [Selected Bibliography](#)

# Library Web Page

<http://www.lsuhscc.edu/no/library/>

- Electronic Journals List
  - Search by Journal Title
  - Search by Word in Journal Title

# Library Web Page

<http://www.lsuhscc.edu/no/library/>

- Online Resources
  - A to Z list

# Library Web Page

<http://www.lsuhscc.edu/no/library/>

- ILLiad - Interlibrary Loan (ILL)
  - What we don't have
    - We can get
- **NO DOCUMENT DELIVERY at this time**

# Search for Journal Articles & Primary Research Studies

- [PubMed](#)
- [EMBASE.com](#)
- [SCOPUS](#)
- [Web of Science](#)

PubMed

National  
Library  
of Medicine 



EMBASE.com

SCOPUS

ISI Web of Knowledge<sup>SM</sup>

# PubMed

- Limits
- **Advanced Search**
  - Display Settings
  - Send to
    - Email
    - Clipboard

# EMBASE.com

- Journal articles (Similar to PubMed)
  - More pharmacology
  - More foreign language
  - Includes MEDLINE
    - Uses SINGULAR headings (EMTREE)

# SCOPUS

- Research
- Affiliation searching
- Direct export to RefWorks

# Web of Knowledge

- Web of Science
  - Index includes conference abstracts
- Endnote Web
- Journal Citation Reports
- ResearcherID

# Evidence Based Medicine Resources

- [Cochrane Library](#)
- [DynaMed](#)
- [Natural Standard](#)
- [PubMed](#) – Clinical Queries
- [Stat!Ref](#) – (ACP Pier)

# Cochrane Library

- Evidence-Based Systematic Reviews

# DynaMed

- Evidence-based point of care
  - Mobile access
    - Requires Serial Number obtained from library

# Natural Standard

- Complementary & Alternative Therapies

# PubMed

- Clinical Queries

# Stat!Ref

- ACP (American College of Physicians)
  - PIER
  - Journal Club
  - Medicine
- Stedman's medical dictionary

# Full Text Textbooks

- [AccessEmergencyMedicine](#)
- [AccessMedicine](#)
- [AccessSurgery](#)
- [MDConsult](#)
- [R2 Digital Library](#)
- [Stat!Ref](#)
- [Thieme](#)



**MDConsult**



**STAT!Ref**



# AccessMedicine

- [Schwartz's principles of surgery.](#)
- [Harrison's Online](#)
- [Current diagnosis & treatment in family medicine.](#)
- Case files
- Quick answers
- USMLEeasy – *Step 3 practice*

# AccessEmergencyMedicine

- [Atlas of pediatric emergency medicine.](#)
- Procedures
- Multimedia & Drugs
- CORD cases
- Grand Rounds
- Quick topics

# AccessSurgery

- Trauma.
- Core Curriculum
- Procedures/Operations
- Textbooks - online
- Differential Diagnosis (DDX)
- Board Review

# MDConsult

- [Textbook of family medicine.](#)
- [Clinical electrocardiography: A simplified approach.](#)
- *Clinics of North America*
- Drug Information: from Gold Standard
- Access MDConsult using LSUHSC ID & Password (email account)

# R2 Digital Library

- Marriott's practical electrocardiography.
- Mastery of surgery.

# Stat!Ref

- Family medicine: Principles and practice.
- Resources:
  - Stedman's medical dictionary
  - MedCalc 3000

# Thieme E-Books

- [Thieme clinical companion dermatology.](#)
- Atlases
  - Color Atlas of Physiology
    - Hormones and Reproduction
- Download whole book

# Other Resources

- MICROMEDEX
- MedlinePlus



MICROMEDEX<sup>®</sup> Healthcare Series



# MICROMEDEX

- Drugs
- Drug interactions
- Dosing tools
- Mobile access

# MedlinePlus

- Consumer health information
  - Up-to-date
  - Authoritative
  - No advertizing pop-ups
- Dictionary (Websters)
  - Audio pronunciation

# Board Exams/Study Resources

- [AccessMedicine](#)
  - Board Review Plus
- [Exam Master](#)
  - Internal & Clinical Medicine
- Create Individual Log-ins

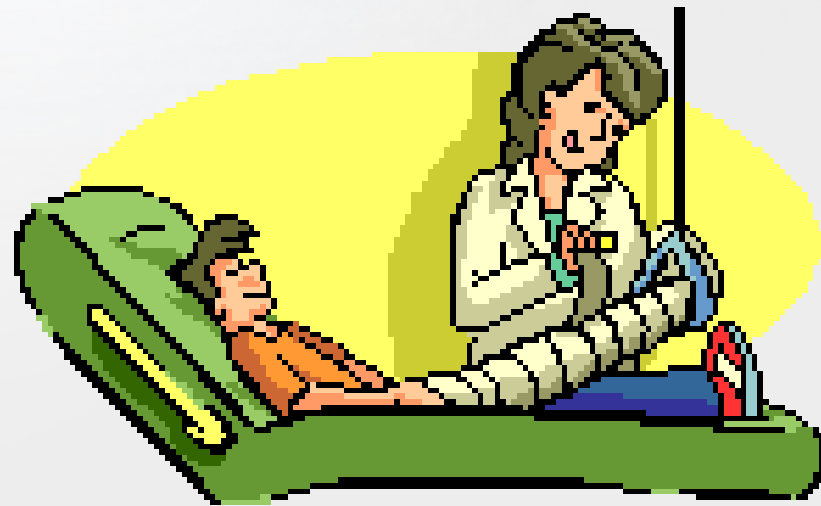
The screenshot shows the website for the John P. Isché Library at Louisiana State University School of Medicine. The page features the LSU Health Sciences Center logo, the text 'Louisiana State University School of Medicine', and the library name 'John P. Isché Library'. The main heading is 'EXAM MASTER OnLine™' followed by 'USMLE and Medical Specialty Board Exams' and the quote 'If you can do EXAM MASTER, you can do the boards.' There is a 'CLICK to start' button and a 'Registered Entry page' link. A footer note says 'BOOKMARK THIS PAGE ONLY ...to regain access later'.

# Bibliography Sources

- [RefWorks](#)
- EndNote Web
  - Via [Web of Knowledge](#)
- Individual Log-in required

# Reference Librarians

- 8 am - 8 pm (Mon - Thurs)
- Friday 8 am – 5 pm
- **Telephone:** (504) 568-6102
- **Live Chat:** Library webpage
- **Email:** [reference@lsuhsc.edu](mailto:reference@lsuhsc.edu)



Thank you