

## Other Information

### **Photocopying & Printing**

Photocopiers are available on each floor & accept small bills, coins and PayPaw cards. Print outs and copies are 8¢ per page with PayPaw card, 12¢ with cash.

**PayPaw cards** may be purchased from a vending machine on the 3rd floor of the Library. These cards may also be used with the University PHAROS Print System.

### **Computer Facilities**

#### **Open Use Computer Lab**

Available on the 4th floor of the library. LSUHSC ID required. Check out a key at the Circulation Desk for access. Includes Office 2007, CD-RW drives & open Internet browsing.

#### **Wireless Access**

Available throughout library. Inquire at Circulation or Reference Desk.

#### **Laptop Ports**

39 laptop ports throughout the Library. Inquire at Circulation or Reference Desk.

#### **Public Access Computers**

Public Access Computers are available to all Library patrons for use with Library Systems, LSUHSC Email, and University applications. No open Internet browsing available.

**PLEASE USE CELL PHONES IN THE LIBRARY'S ELEVATOR LOBBY**

**FOOD & DRINK ARE PROHIBITED IN THE LIBRARY**

## LOUISIANA STATE UNIVERSITY HEALTH SCIENCES CENTER

### CONTACT INFO

John P. Isché Library  
433 Bolivar St.  
New Orleans, LA  
70112-2223

CIRCULATION: 504-568-6100  
REFERENCE: 504-568-6102 OR  
504-568-8339

[reference@lsuhsc.edu](mailto:reference@lsuhsc.edu)

INTERLIBRARY LOAN: 504-568-6101

Dental School Library  
1100 Florida Ave.  
New Orleans, LA  
70119-2477

PHONE: 504-941-8158

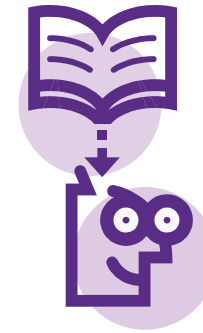
[dentlib@lsuhsc.edu](mailto:dentlib@lsuhsc.edu)

<http://www.lsusd.lsuhscc.edu/libr/>

Updated: 01.07.09 mmk  
© 2008 LSUHSC Libraries

LOUISIANA STATE UNIVERSITY  
HEALTH SCIENCES CENTER

John P. Isché & Dental School Libraries



# Library Guidelines

Basic information  
you need to know  
about the  
LSUHSC library

# LIBRARY HOMEPAGE URL: <http://www.lsuhscc.edu/no/library>

## Isché Library Hours

Monday - Thursday 8 am~10 pm  
 Friday 8 am~6 pm  
 Saturday 9:30 am~6 pm  
 Sunday 1:30~10 pm

**Reference Librarians** are available from 8 am until 8 pm Monday through Thursday and from 8 am until 4:30 pm on Fridays. Email reference answered within 24 hours: [reference@lsuhsc.edu](mailto:reference@lsuhsc.edu)

Holiday, Summer, and Examination schedules are posted as needed. The Libraries may not maintain the same schedule during these times; please call each location for the latest information. Circulation: (504) 568-6100

## Borrowing Privileges

All Library Patrons must bring proper

<u>Institution</u>	<u>Available to</u>	<u>Proper ID</u>
LSUHSC	Faculty, Residents Staff & Students	LSUHSC ID
Tulane Medical Center	Faculty, Residents, Staff & Students	TMC ID
Area Licensed Health Professionals		Driver's license & appropriate health license

## Loan Periods

Journals/Periodicals  
 Bound 1 week: no renewals  
 Unbound 1 day: no renewals

Nursing Journals Do not circulate

Books/Monographs 2 weeks: 1 renewal

General Reserve Books Overnight  
 Check out 1 hour before  
 closing, return 1 hour after  
 opening the next day

Restricted/  
 Reference Reserve No overnight loans

Audio Digest cassettes 1 week: no renewals

**Reserve Materials** are kept behind the Circulation Desk in call number order; ask a library staff member for assistance. Some Reserve items may be taken out of the library on an overnight loan. They may be checked out one hour prior to library closing and must be returned to the Circulation Desk no later than one hour after the library's next opening. Reserve material must not be returned to a book drop. Overdue fines are incurred for late Reserve items.

**Interlibrary Loan (ILLiad)** is now available online. Create a profile and request materials directly from your office, lab or home. More information: <http://illiad.lsuhscc.edu/illiad/ill.html>

## Arrangement of Stacks

Photocopiers and Library System Terminals are located on each floor.

Third Floor Entrance & Exit  
 Library Departments & Offices  
 Reserve & Reference Collections

Fourth Floor Books/Monographs — shelved by  
 call number  
 Group Study Rooms  
 Audio-Visual Collection &  
 Equipment  
 Computer Lab (Room 401K)  
 Computer Services Classroom  
 (Room 405) Obtain key  
 from Computer support  
 (504) 568-8622  
[dcunni@lsuhsc.edu](mailto:dcunni@lsuhsc.edu)  
 Rare Books Collection  
 8:30AM - 4:30PM by appoint  
 ment, call (504) 568-6100

Fifth Floor Journals — Shelved in  
 alphabetical order by title

**Please do not reshelve any materials  
 used in the library.**

## **INNOPAC (library catalog)**

<http://innopac.lsuhscc.edu/>

## **Electronic Resources**

<http://www.lsuhscc.edu/no/library/ss&d/default.htm>