









Access these resources:

<http://www.lsuohsc.edu/no/library/ss&d/default.htm>

NAME	SEARCH FOR
 the cochrane library	Evidence-based medicine & systematic reviews
 DIGITAL DISSERTATIONS	Dissertation & thesis abstracts with limited full-text (Formerly <i>Dissertation Abstracts</i>)
	CINAHLPlus with Full Text: Current Index to Nursing & Allied Health Literature ERIC: Educational Resource Information Center MEDLINE: biomedical, nursing, allied health & dental journal articles Mental Measurements Yearbook: test info PsycINFO: Behavioral sciences and mental health Rehab Reference Center: Clinical decision making & handouts SPORTDiscus: sport, fitness and related disciplines Tests in Print: test info Journal articles and full text
	Pharmacological & biomedical literature
 Health and Psychosocial Instruments	 Evaluations and information on a variety of health and psychosocial tests
 the Library Catalog	Books and journals in the LSUHSC Library & online
	MEDLINE and more, including biomedical, nursing, allied health & dental journal articles
	Research literature and quality web sources
	Online textbooks & dictionary
	Web of Science: information on cited journal articles Journal Citation Reports: journal evaluation resource Current Contents Connect: Current journals, websites and books

GOVERNMENTAL HEALTH RESOURCES



<http://www.cdc.gov>

Infectious disease statistics and reports

ClinicalTrials.gov

<http://clinicaltrials.gov>

Studies using human volunteers for health research



<http://www.hhs.gov/>

US Dept. of Health and Human Services



<http://www.healthypeople.gov/>

National health priorities

MEDLINEplus[®]
Health Information

<http://medlineplus.gov/>

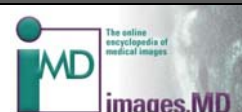
Patient information



<http://www.nih.gov>

Biomedical research

RESEARCH & PRESENTATION TOOLS



<http://www.lsuhs.edu/no/library/ss&d/data/imagesmd.html>

Medical images



<http://www.lsuhs.edu/no/library/services/refworks.html>

Personalized bibliography creator

LIBRARY LINKS

Homepage

<http://www.lsuhs.edu/no/library/>

Remote Access (WAM)

<http://www.lsuhs.edu/no/library/ss&d/remote.html>

Inter Library Loan (ILL)

<http://illiad.lsuhs.edu/illiad/ill.html>

CONTACT US

Circulation

(504) 568 - 6100

Reference

(504) 568 - 8339 or (504) 568 - 6102

reference@lsuhs.edu

ill@lsuhs.edu