

Demolish Sub-station 5 and  
remove from site





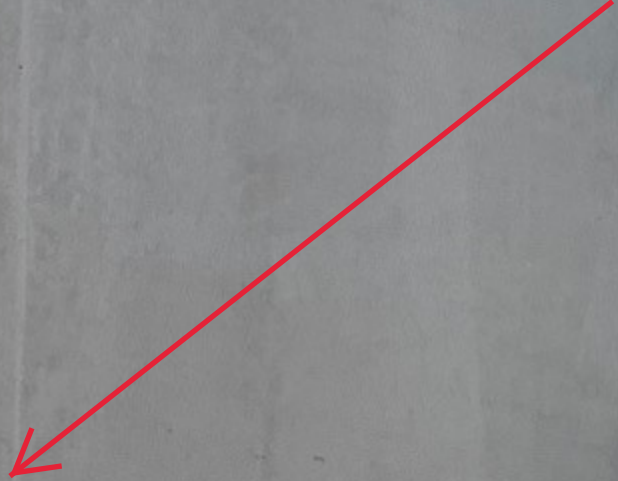
Demolish Sub-station 4 and remove from site

Demolish Concrete Slab and remove from site; install fill and follow slope of surrounding areas

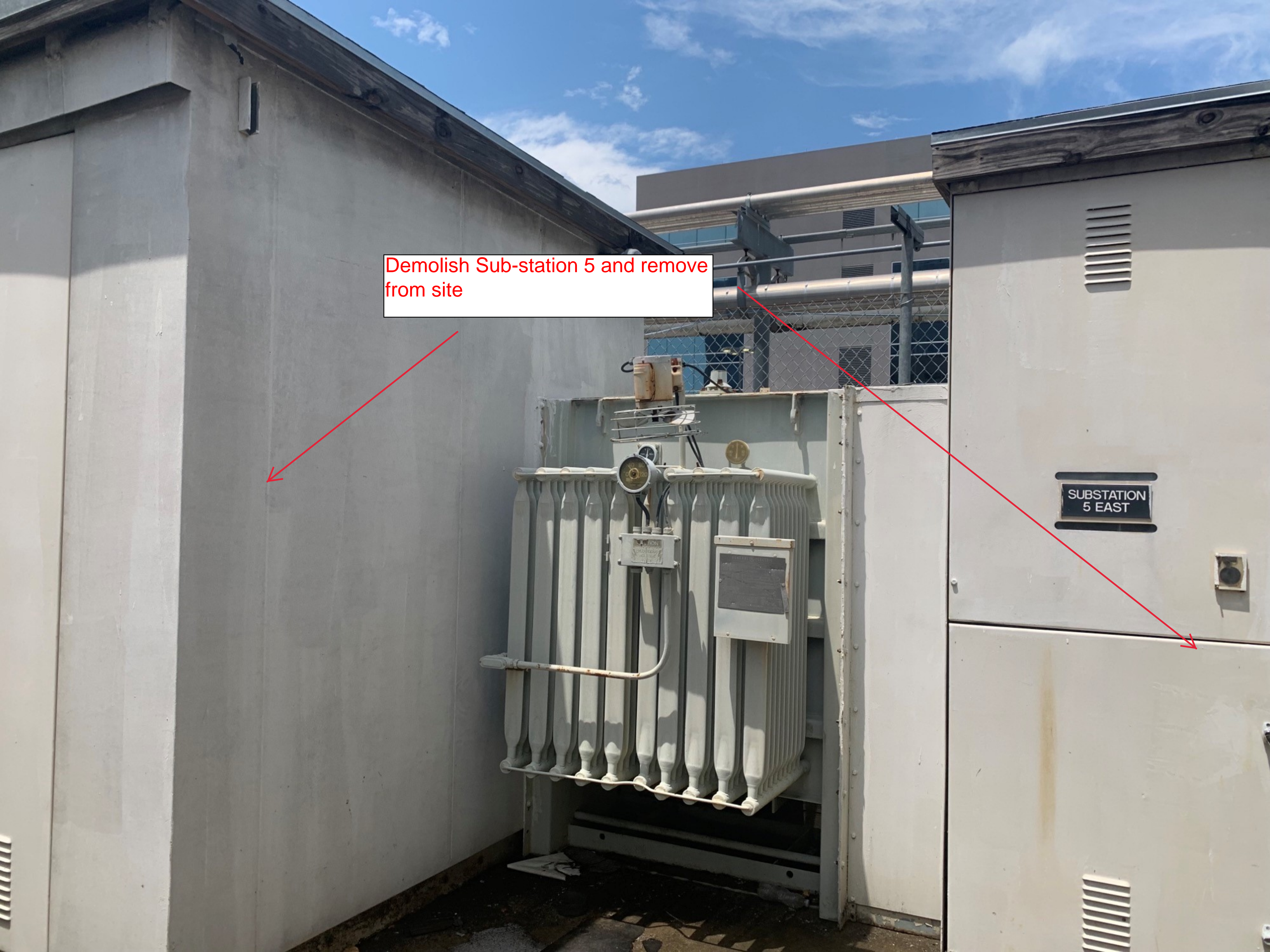
SUBSTATION  
4 EAST

CAUTION  
UNEXPECTED  
VOLTAGE  
MAY BE  
PRESENT

Demolish Sub-station 5 and remove from site



SUBSTATION  
5 EAST





Demolish Sub-station 5 and remove from site

**NORMAL  
POWER**



Demolish Sub-station 4 and  
remove from site

MAIN



Demolish conduit and  
conductors and remove  
from site; cap all building  
penetrations (typical)

**SQUARE D**  
ENCLOSURE  
CIRCUIT BREAKER  
AUTOMATICALLY DEENERGIZES  
DURING OVERCURRENT  
AND SHORTCIRCUIT

Demolish existing flood gate assembly and remove from site



Remove existing panel and all associated conduit and conductors (typical)





Existing Switchboard to be salvaged and relocated to HDC electrical room (coordinate with Construction Coordinator on the location)

**SQUARE D**  
Schneider Electric

**SQUARE D**

**SQUARE D**

**WARNING**  
**ADVERTENCIA**  
**AVERTISSEMENT**

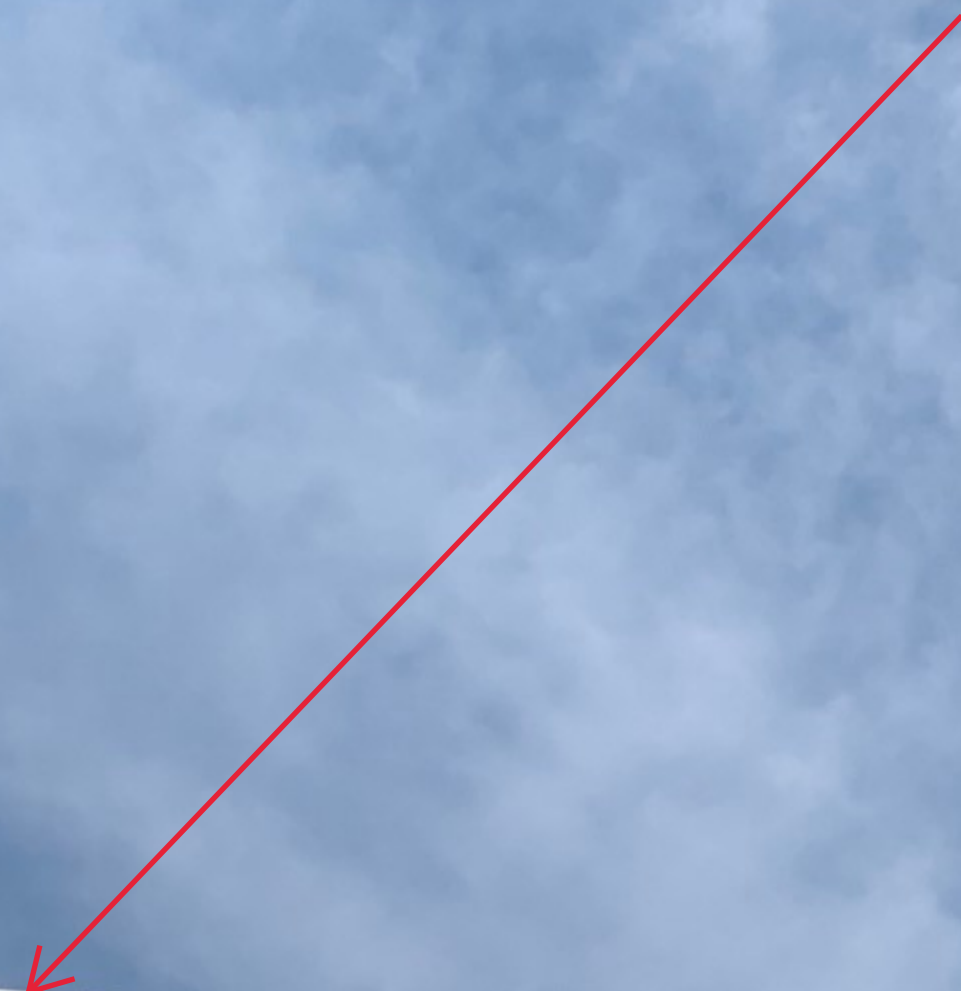
Housekeeping Pad to be demolished and removed from site

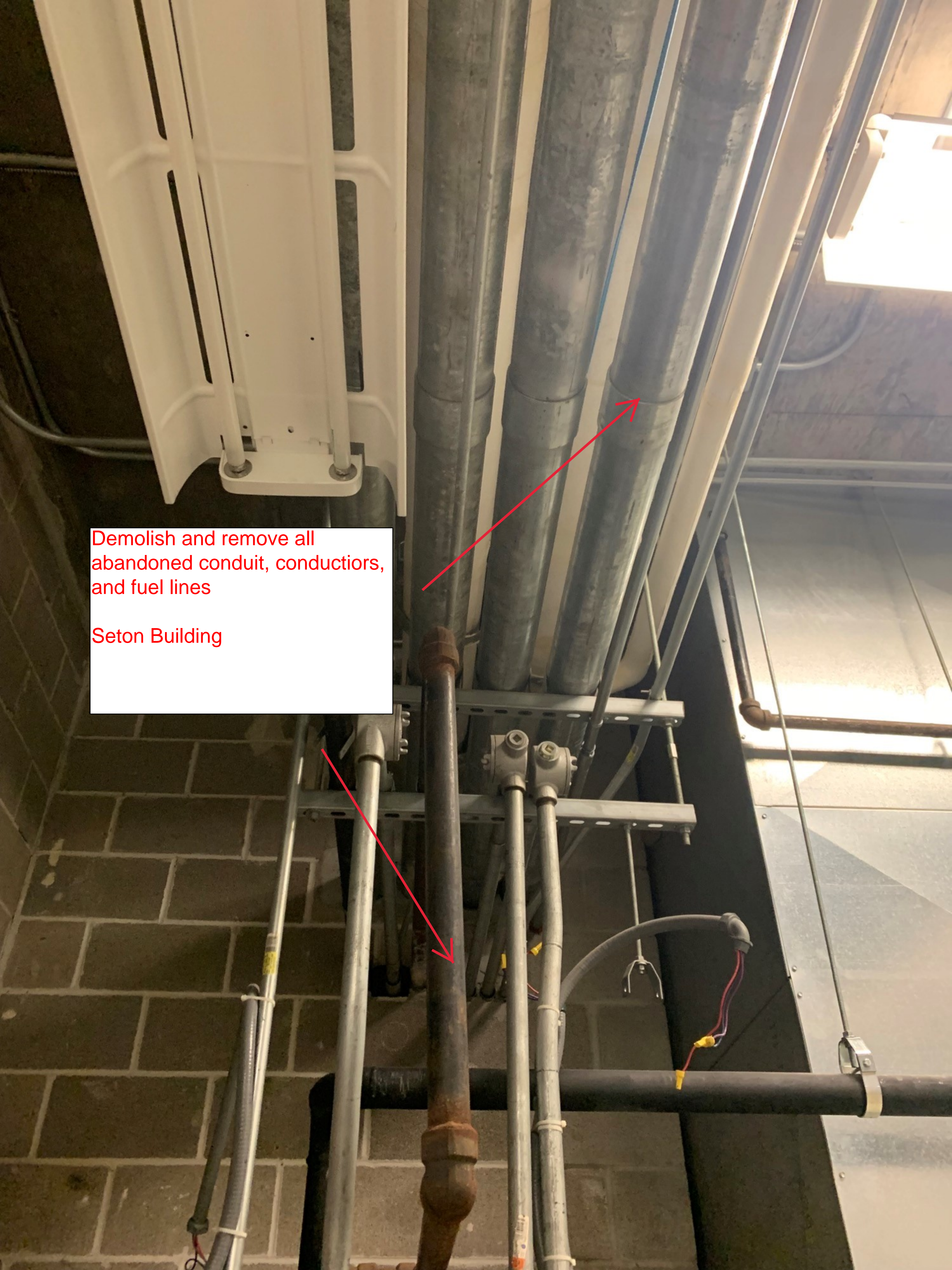




Existing Transformer to be remove by Entergy,  
housekeeping pad and bollards to demolished and  
removed from site (Patch Asphalt Hot Mix)

Conduit and conductors shall be demolished and removed from site





Demolish and remove all  
abandoned conduit, conductors,  
and fuel lines

Seton Building

Fire pump conduit and conductors leading to Seton Bldg to be demolished and removed from site (patch any building penetrations)




Fire pump conduit and conductors leading to Seton Bldg to be demolished and removed from site (patch any building penetrations)



Fire pump conduit and conductors leading to Seton Bldg to be demolished and removed from site (patch any building penetrations)








Demolish and remove from site all concrete curbs, house keeping pads, and site concrete at Fuel Yard; install fill to match existing surrounding elevation



Demolish and remove from site all concrete curbs, house keeping pads, and site concrete at Fuel Yard; install fill to match existing surrounding elevation

A photograph showing a concrete area, possibly a parking lot or driveway, with a chain-link fence on the right side. In the background, there is a building with large windows and several cars parked. A text box is overlaid on the image, containing instructions for demolition and site preparation.

Demolish and remove from site all concrete curbs, house keeping pads, and site concrete at Fuel Yard; install fill to match existing surrounding elevation

Remove Steel stair platform from stie

Demolish and remove from site all concrete curbs, house keeping pads, and site concrete at Fuel Yard; install fill to match existing surrounding elevation



Remove drain and underground separator tank; capped existing drain line

Fuel Yard




Demolish and remove from site all concrete curbs, house keeping pads, and site concrete at Fuel Yard; install fill to match existing surrounding elevation



Demolish and remove existing concrete grade beam from site



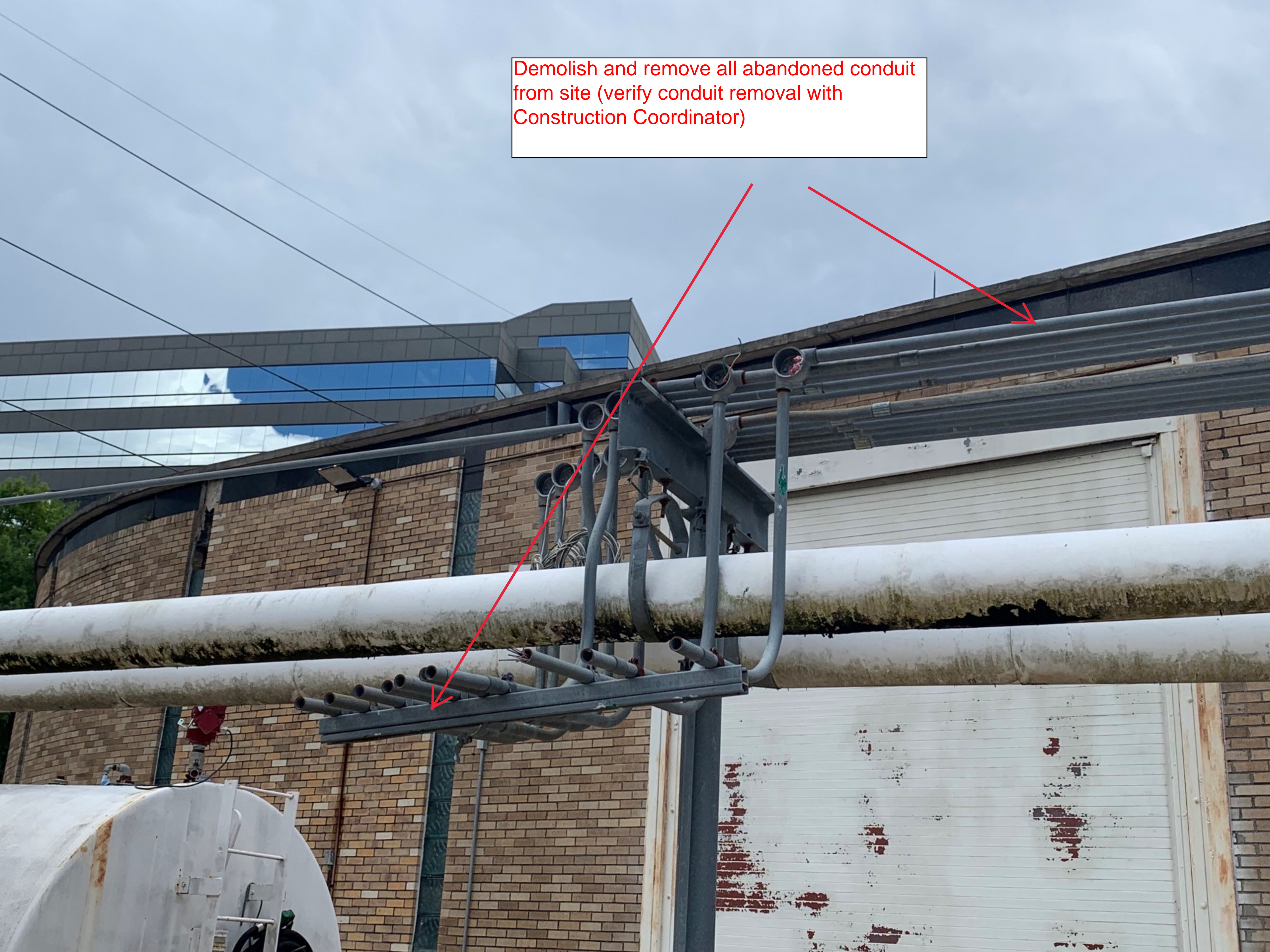



Demolish and remove existing concrete grade beam from site

install fill to match existing surrounding elevation



Demolish and remove all abandoned conduit from site (verify conduit removal with Construction Coordinator)





Demolish conduit and conductors and remove from site; cap all building penetrations (typical)

Remove existing light pole and foundation from site



Remove existing light pole and foundation from site



Re-install black vinyl fence; supply all needed components to complete installation



Re-install black vinyl fence; supply all needed components to complete installation



Demolish and remove  
existing masonry wall and  
footer from site



Demolish and remove  
existing masonry wall and  
footer from site





Saw Cut and demolish masonry wall and footer (remove from site typical)

Not in Scope

Not in Scope

Not in Scope

Not in Scope

Not in Scope

Not in Scope

Not in Scope