

CHANCELLOR'S Notes



January 18, 2008

Trail Chair approved

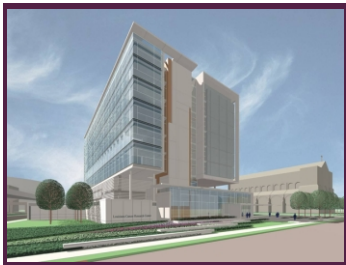
At its meeting yesterday, the LSU Board of Supervisors approved the Mervin L. Trail, MD Endowed Chair for Head and Neck Oncology. The chair will serve as a lasting tribute to the late Chancellor Trail. The



next step is to apply to the Board of Regents for matching funds to complete the \$1 million endowed chair. For more information, contact Dr. Dan Nuss.

BOS approves plans for Cancer Research Center

The Board of Supervisors approved plans for the



Louisiana Cancer Research Center at yesterday's meeting, along with a 50-year land lease. Construction costs for the 175,000 sq. ft. research facility will be funded through the capital outlay budget. At the conclusion of the 50-year lease, the building will become the property of LSU. The project will go to the Board of Regents for approval next week.

Dental School wins top national honor

Our School of Dentistry has been selected as the inaugural academic dental institution recipient of the William J. Gies Award for Outstanding Innovation. The award will be presented by the ADEA Gies Foundation at a black-tie celebration on March 29, 2008 in conjunction with the 85th American Dental Education Association (ADEA) Annual Session at the Hilton Anatole in Dallas, Texas. Named after William J. Gies, a pioneer in dental education, the



William J. Gies Awards for Vision, Innovation, and Achievement recognize contributions to and support of global oral health and education initiatives. Our School of Dentistry is being honored for its innovation in rebuilding dental education in the State of Louisiana following Hurricane Katrina, a critically important endeavor as the LSUHSC School of Dentistry is the only dental school in the state.

Physical Therapy Clinic holds Open House

The Physical Therapy Department showed off their newly reopened clinic at an Open House this week. The event, which was free and open to the general public, afforded an opportunity to see the newly renovated clinic, to meet the LSUHSC Physical Therapists and to ask general questions.



There has been a recent change in how people can access physical

therapists. A change in the rules governing practice in 2004 now allows the public direct access to physical therapists under certain conditions. The Practice Act now allows for evaluation without a referral, however, the direct access component of the Practice Act requires a diagnosis from a person licensed to practice medicine, surgery, dentistry, podiatry, or chiropractic within 90 days in order for treatment to be rendered.

The clinic offers a full range of services including orthopaedic, sports injuries, neurological including stroke, oncological, women's health including osteoporosis and postoperative breast cancer therapy, evaluations, shoe wear and more. Wellness activities will also be available soon.