

DR. LARRY HOLLIER

CHANCELLOR'S Notes



February 24, 2012

Follow our progress

Following the progress of the construction of the new University Medical Center has never been easier or more convenient. Skanska MAPP has posted a Work Zone Cam page to the internet.



The site features still images of the construction site every hour of every day, time lapse movies, current weather conditions and more. It provides a bird's eye view of our new teaching hospital and the future of health care in New Orleans taking shape across the street from our downtown campus.



A beehive of activity, it's exciting to see this tremendous new resource for the city, state and region coming to life.

The address for the page is <http://skanska.workzonecam.com>.

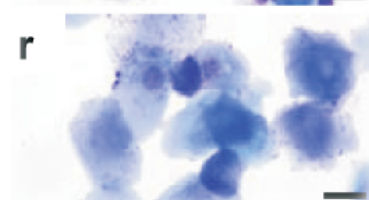
LSUHSC researcher contributes to discovery about potentially deadly fungus

Glen Palmer, PhD, LSUHSC Assistant Professor of Microbiology, Immunology & Parasitology, was part of an international research team that discovered opportunistic fungi like *Candida albicans* can sense the immune status of host cells and adapt, evading immune system defenses. Unlike previous studies, this research investigated both sides of the infection equation as well as the interaction between the fungi and the cells they will invade. The findings are published online in *Nature Communications* in the most recent articles section (February 21, 2012).

The researchers determined that *C. albicans* binds to the host immune signaling molecule, Interleukin (IL) 17A, which permits the fungus to navigate and tolerate the active immune environment of healthy host tissue, mounting effective countermeasures. IL-17A may also contribute to disease susceptibility by modifying the intrinsic virulence of the fungus. This study provides molecular evidence that by exploiting IL-17A, the fungus not only survives, but can cause disease to develop.

"It's a bit like the fungus is listening in to the conversations our immune system is having so it can best determine how to react and survive in our tissues. This may also be a crucial step in determining when this opportunist decides to invade host tissue and cause life-threatening disease in an immunosuppressed patient," notes Dr. Palmer.

Disrupting or manipulating this process may suppress an infection and eliminate this potentially dangerous fungus before it causes problems.



Throw me something, mister!



Vice Chancellor Ron Gardner had a great ride with our LSUHSC partners aboard the Al Copeland - Phenomenon float in the Bacchus parade Sunday night. A number of LSUHSC faculty and staff participated in a host of carnival organizations and contributed to a truly spectacular 2012 Mardi Gras - one of the biggest and best in years!