

DR. LARRY HOLLIER

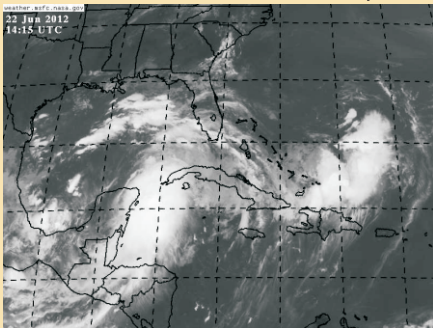
CHANCELLOR'S Notes



June 22, 2012

Eyes on the tropics

All eyes are on an area of low pressure in the Gulf of Mexico. While nothing is certain about tropical weather, this system has the potential to develop into Tropical Storm Debbie over the next few days.



In the event of a risk to our area, we will communicate information through the normal vehicles. These include the web, emails, the Health Sciences Center's Twitter account, @LSUHSCHealth, digital signage, telephone trees, media, and the e2Campus text messaging service.



If you haven't already and would like to [opt-in](#) to receive text messaging and/or email alerts through our e2Campus subscription, you can register at the Emergency Preparedness section of the LSUHSC website. Just follow the [Text/Email Alerts](#) link in the menu.

And if your contact information has changed, please take a moment to update it.

Rising up: UMC project progresses

Construction on the University Medical Center is moving along with changes on the site visible from week to week.



June 22, 2012



June 15, 2012

The structure of the Diagnostic and Treatment Building is underway, as is work on the Inpatient Towers 1, 2 and 3, and the Elevated ER Deck. Precast pile driving has commenced for the Ambulatory Care Building and the Elevated Garage. The hospital is on track to open in 2015.