



CHANCELLOR'S Notes



September 7, 2012

LSUHSC's Alahari among People to Watch

Dr. Suresh Alahari, the Fred G. Brazda Professor of Biochemistry & Molecular Biology at LSU Health Sciences



Dr. Suresh Alahari

Center, is among the 30 individuals featured in New Orleans Magazine's annual People to Watch issue.



They represent "new faces doing noteworthy activities or, in some cases, old faces doing new things." Dr. Alahari was chosen for his cancer research, most notably the protein his laboratory discovered called Nischarin that can inhibit the growth of breast cancer cells.

LSUHSC major player in new \$20M clinical research effort

LSU Health Sciences Center New Orleans is one of the primary institutions funded by a \$20 million NIH grant to expand clinical trials and translational



Photo by Joseph Hischer

Dr. Steve Nelson, Dean of the LSUHSC-NO School of Medicine, is LSUHSC's principal investigator research through the new Louisiana Clinical and Translational Science (LA CaTS) *see LA CaTS, page 2*

LSUHSC doctors treat Isaac-related CO poisoning

So far, LSUHSC emergency medicine physicians specializing in Hyperbaric Medicine have treated 23 cases of carbon monoxide poisoning since Hurricane Isaac caused massive power outages in the area.



They took care of the patients in the Hyperbaric unit at West Jefferson Medical Center in the only large multiplace chamber between Panama City, FL and Beaumont, TX.

The cases resulted from the use of portable generators. A portable generator is an internal combustion engine that exhausts a deadly gas called

see Hyperbarics, page 2

LA CaTS, from page 1

CaTS) Center. The overall P.I. is Dr. William Cefalu, LSUHSC Professor and Chief of Endocrinology, who is also Associate Executive Director for Clinical Research at Pennington. The LSU public hospital system will also play a pivotal role.

This new research award from the NIH will now facilitate and accelerate the creation of a unified clinical research infrastructure and a network of clinical investigators that will transform the performance of clinical research in Louisiana resulting in new ways to prevent, diagnose and treat disease. Our patients will no longer need to leave Louisiana in order to have access to the latest breakthrough therapies.

A critical function of this new research alliance is to conduct research which translates into significant advancements in healthcare. This translational research platform will function like a magnet to attract exceptionally talented clinician researchers that will provide access for our patients to innovative and breakthrough therapies. Additionally, the opportunities for Louisiana that these research dollars support go well beyond their relevance to healthcare. Simply stated, the knowledge created by medical research results in new medicines, new treatments, and new technology and businesses which create job growth. It is an economic engine that will attract high-skill, high-wage jobs to ignite our regional economy and economic prosperity.



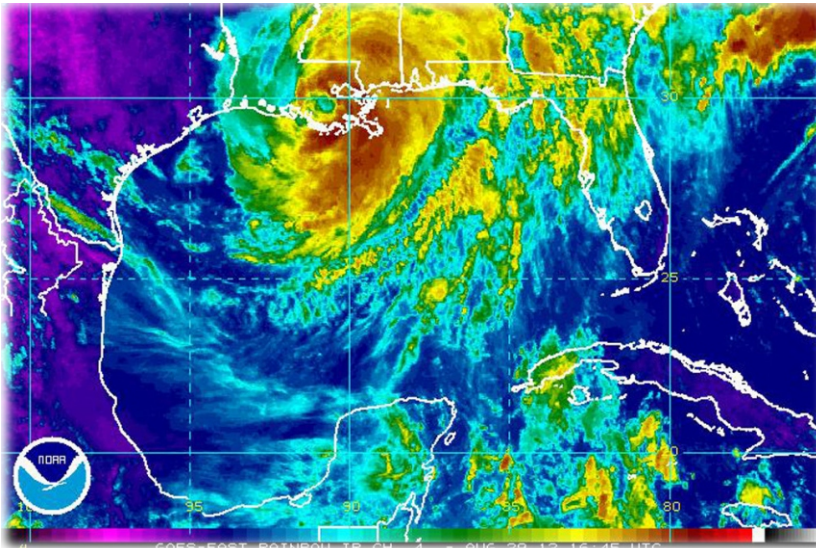
Dr. William Cefalu

Hyperbarics, from page 1

carbon monoxide or CO. CO is odorless and colorless, and inhaling it can cause everything from headaches and nausea to loss of consciousness and death. Treatment with hyperbaric oxygen rids the body of CO more rapidly and has been shown to prevent delayed neurological symptoms.

There were more CO poisoning cases with Isaac than with either Katrina or Gustav. The danger appears to be greater when people stay put.

Generators should be placed outside in a well ventilated area, far away from open windows and air intakes.



Southeast Louisiana feeling the impact of Hurricane Isaac

School Supply Drive Extended

Due to Hurricane Isaac, the deadline for accepting donations for the School Supply Drive sponsored by the LSUHSC-New Orleans Schools Science Partnership Program has been extended to Monday, September 17th.

School Supply Drive!!



Please donate much needed school supplies for 4th graders:

No. 2 pencils, one subject notebooks, glue, markers, color pencils, backpacks, pencil cases, erasers, loose leaf paper, etc.

Look for marked collection boxes in the MEB, CSRB, Allied Health, Dental School, Lions, and Resource Center Buildings

Extended through Monday, September 17th, 2012

For more information, contact Dr. Fern Tsen (fml@lsuhsc.edu)

Items the schools still need include: No.2 Pencils, One Subject Notebooks, Backpacks, Erasers, Crayons, Colored pencils, Markers, Glue, Loose Leaf Paper, and Rulers, but they will accept anything else you think elementary school classrooms could use. For example, the 4th graders love to use the totes given out at conferences as PE bags. Please make sure the items are new and unused.

Look for labeled collection boxes in the MEB, CSRB, Dental School, Allied Health, Lions, and Resource Center Buildings.

The School Supply Drive is a project of the LSUHSC - New Orleans Public Schools Science Partnership Program in our School of Graduate Studies.

Thank you for your generosity!