



DR. LARRY HOLLIER

CHANCELLOR'S Notes



November 30, 2012

Med students organize toy drive

The Pediatric Interest Group in the LSUHSC School of Medicine is asking for your help to brighten the holidays for less fortunate children in our community. They're collecting new, unwrapped toys until December 18th. Drop off boxes are in Lecture Rooms A & B in the Medical Education Building.



Holiday Toy Drive



Sponsored by the Pediatric Interest Group

Nov 22 - Dec 18* (Drop off boxes to Lecture Halls A & B, 3rd floor 943B)

On December 18th, Anna DiCarlo, President of the Pediatric Interest Group and the other officers, will take the toys to an official Toys for Tots drop off location. Toys for Tots will distribute the toys.

The primary goal of Toys for Tots is to deliver, through a new toy at Christmas, a message of hope to less fortunate youngsters that will assist them in becoming responsible, productive, patriotic citizens.

Toys for Tots is a program of the U. S. Marine Corps Reserve. Local campaigns are conducted annually in over 700 communities covering all 50 states, the District of Columbia and Puerto Rico. Toys will be distributed locally throughout December at events throughout our community.

Tumor Registry at LSUHSC earns top NCI quality honor

The Surveillance Epidemiology and End Results (SEER) Program of the National Institutes of Health's National Cancer Institute awarded the Louisiana Tumor Registry at the LSU Health Sciences Center New Orleans



LSUHSC Louisiana Tumor Registry Staff

School of Public Health with a 2012 Data Quality Profile First Place Award. LSUHSC's Louisiana Tumor Registry is the only SEER expansion registry to receive a first place award. This is the fourth time LSUHSC's Louisiana Tumor Registry has *See Honor, page 2*

LSUHSC forensic dentists id missing oil worker

A team of forensic dentists at LSU Health Sciences Center New Orleans School of Dentistry identified the body of an offshore oil platform worker found in the



Gulf of Mexico on Monday. Ronald Carr, DDS, Clinical Professor of Pathology and Oral and Maxillofacial Pathology, and Robert Barsley, DDS, JD, Professor and Head of the Division of Diagnostic Sciences in the

See Forensic, page 2

Honor, from page 1

earned this award, and the third consecutive year. The SEER Program is the most authoritative source of information on cancer incidence and survival in the United States.

The SEER Program evaluates the quality of data from each registry every year. Sixteen measures are evaluated, including the estimated completeness of cases (for computing incidence rate), percent unknown or missing for key demographic and tumor variables, and follow-up rates (for calculating survival).

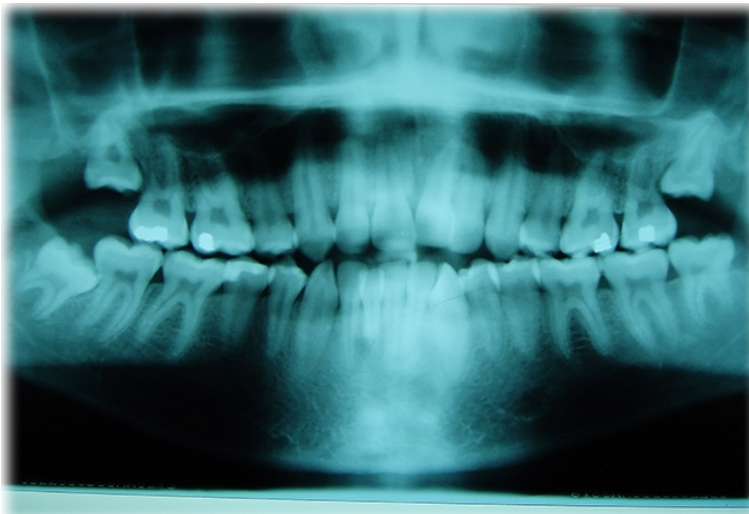
The SEER Program collects cancer incidence and survival data from 18 population-based cancer registries in the United States. It is considered to be the standard for quality among cancer registries around the world. Quality control has been an integral part of SEER since its inception.



Forensic, from page 1

Department of Comprehensive Dentistry and Biomaterials, and Director of Oral Health Resources, Community & Hospital Dentistry at LSU Health Sciences Center New Orleans School of Dentistry, used his dental records from the Philippines to identify Jerome Malagapo who had been missing since the November 16 explosion on an oil platform operated by Black Elk Energy Offshore Operations, LLC.

Drs. Carr and Barsley worked with Lafourche Parish Coroner Dr. John King on this case. As often happens with complex cases, identifications are made through dental records. Dental identification presents a reliable and rapid method in circumstances such as these. LSUHSC New Orleans forensic dentists have worked with coroners' offices in a number of jurisdictions in the region, law enforcement, and the FACES Lab at LSU for many years. LSUHSC faculty report their findings to these agencies who release the information.



Dental Students make holidays merrier

The Dental Classes of 2015 and 2016 are helping to make the season bright. Second-year dental student Benjamin White coordinated a local Operation Christmas Child campaign. During the week before Thanksgiving, shoe boxes filled with gifts were collected for distribution to needy children all around the world. The dental school also provided toothbrushes and toothpaste to go into each box.

"We wanted a project that would allow each of our class members to bring the joy of Christmas to needy children," said Ben. "Operation Christmas Child was a perfect fit."



Jenny Herman and Benjamin White

Jenny Herman, first-year dental student, launched a food drive for Second Harvest Food Bank. Whitney Walker, class president, and other members of the Class of 2016, are also assisting with the effort. Boxes for the collection of non-perishable food items are available throughout the school until December 19.

"If between now and Christmas, everyone buys a few cans during every trip to the grocery store, we can help an incredible number of people," said Jenny, who wanted a project in which the entire school could participate.