



DR. LARRY HOLLIER

# CHANCELLOR'S Notes



February 7, 2014

## LSUHSC docs lead marathon outreach effort

**L**SUHSC's Dr. Betty Lo-Blais, Associate Professor of Clinical Medicine and Pediatrics, beat the sun to City Park on Sunday morning. She had a lot of last-minute details to take care of so the medical support teams and supplies for the Rock 'n' Roll New Orleans Marathon were in place and ready to go when the runners were. This is the fourth year she has volunteered her services to the event.



Dr. Lo-Blais (r) and Matt Lammi check supplies

She recruited LSUHSC residents, medical students and faculty, who served as captains in the medical tents.

Thankfully there wasn't a heart attack, unlike last year, but at least five people were transferred to hospitals for dehydration and altered mental status. The teams also treated the usual assorted minor injuries.



Dr. Angela McLean and Paul Thien

The event drew 16,000 people from all 50 states and 25 foreign countries.

## Trapido puts LSUHSC on the map

**D**r. Edward Trapido, Associate Dean for Research, Wendell Gauthier Professor and Chair of Cancer Epidemiology, put the LSUHSC School of Public Health on the map – literally. He organized and got our school's activities placed on the map of World Cancer Day events. According to the World Health Organization, there are more than 12 million new cases of cancer diagnosed in the world each year. That number is increasing globally, especially in poorer parts of the world. LSUHSC School of Public Health faculty members are working to reduce the burden of cancer locally and globally.



Dr. Edward Trapido

World Cancer Day was Tuesday, and our School of Public Health raised awareness about cancer to both prevent new cases and reduce cancer deaths in Louisiana.



Louisiana and the US, the impact of lifestyle choices, as well as the importance of screening and prevention. It is available on the school's homepage. *See Cancer, page 2*

Despite progress with some cancers, there are still discrepancies between Louisiana and US rates, particularly in cancer deaths.

The LSUHSC School of Public Health developed a Fact Sheet on Cancer in Louisiana. Highlights include the state of cancer in Louisiana, disparities between cancer rates in

## Pre-Dental 101 draws students from eight states

**N**early 200 students from Louisiana, Mississippi, Maryland, Illinois, Georgia, Texas, Arkansas, and Alabama participated in this year's Pre-Dental 101: A Brush Up on Dentistry. The day-long conference was held at the LSUHSC School of Dentistry on Saturday.



Dr. Toby Cheramie

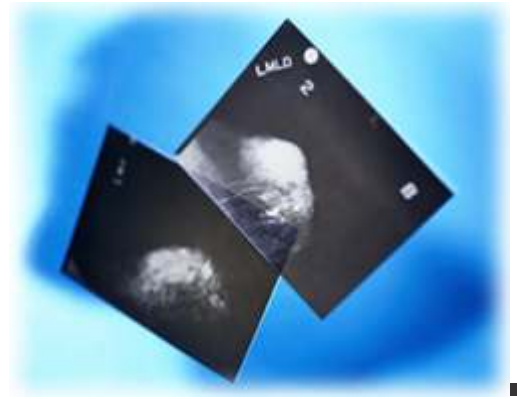
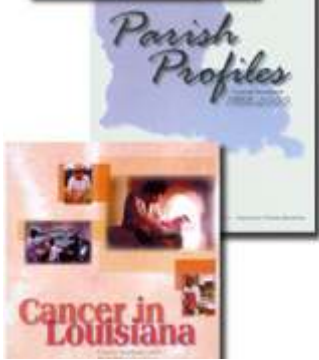
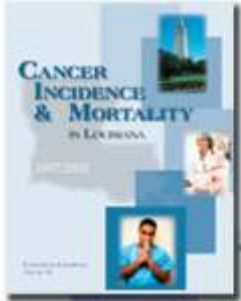
It is an annual event co-sponsored by the Pre-Dental Society at Louisiana State University in Baton Rouge. The conference includes workshops for both the dental and the dental hygiene tracks.

It's primarily geared toward helping students navigate the admission application process, but it also serves as a motivator for them to continue working hard and doing well so that they can hopefully realize their dreams of

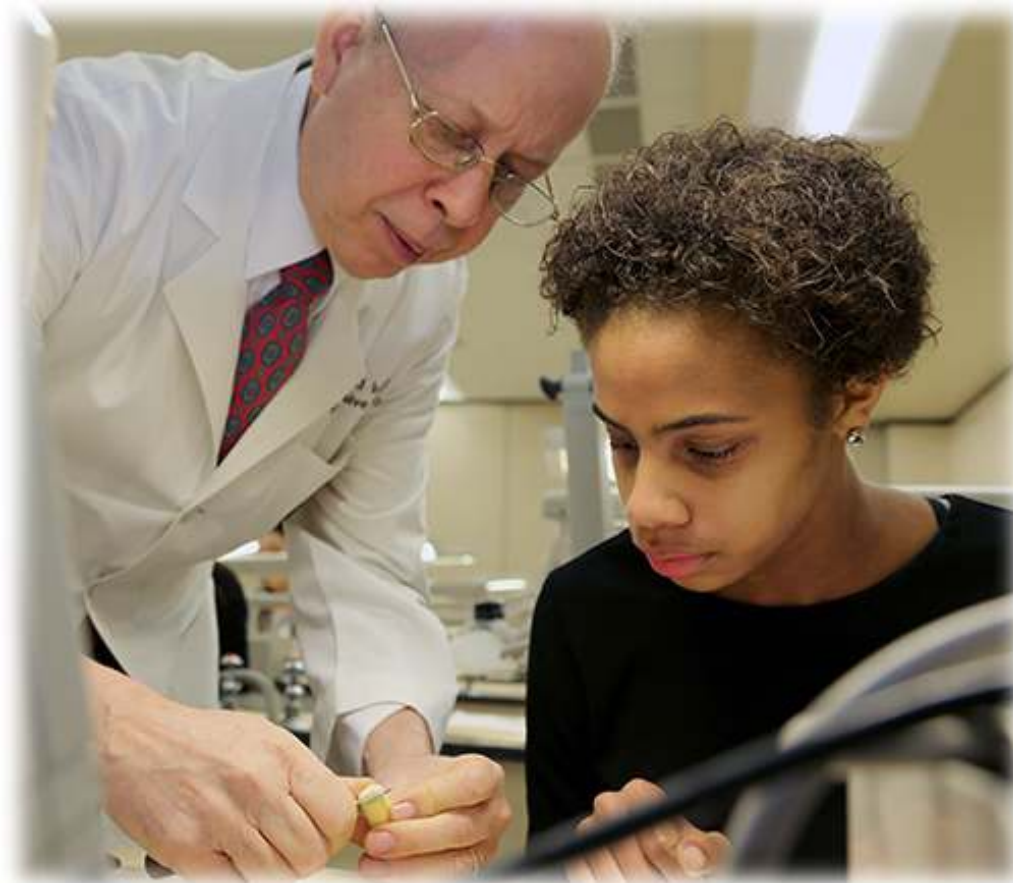
*See Dental, page 2*

## Cancer, from page 1

The LSUHSC School of Public Health has a number of cancer research and service programs. LSUHSC's Louisiana Breast & Cervical Health Program, which helps provide screening and treatment to uninsured and underinsured women, is one of LSU Health Sciences Center's programs that helps reduce deaths from cancer in Louisiana. LSUHSC's Louisiana Tumor Registry is one of the 18 competitively awarded cancer registries in the SEER (Surveillance, Epidemiology and End Results) Program of the National Cancer Institute. The SEER Program is the most authoritative source of information on cancer incidence and survival in the United States. The school administers the Tobacco Cessation Initiative/Tobacco Free Living and is home to the Trim Kids and Trim Teens Programs, cited by the National Cancer Institute as a gold standard for risk reduction. Dr. Edward Trapido is funded by the National Institute of Environmental Health Sciences (NIEHS) to study women and their children in the seven southeast parishes of Louisiana most affected by the Deepwater Horizon Gulf oil spill to determine the physical, social, and mental health outcomes as well as the need for long-term follow up to assess the potential cancer outcomes.



## Dental, from page 1



*Dr. Edward Ireland demonstrates the finer points of chalk carving.*

becoming dentists or hygienists.

The workshops ranged from chalk-carving exercises to overviews of oral pathology, endodontics, CAD-CAM imaging, orthodontics, as well as how to pay for dental school. There were sessions on research and basic science, dentistry and community outreach, and dental waxing and hypnosis demonstrations. New this year was a workshop on alternative careers if a student discovers that the dental track is not for him/her. The event also included tours of the dental school campus.

Dr. Toby Chermie, Director of Admissions, Carrie Mason, RDH, MEd, Director of Dental Hygiene, and Caleb Blackburn, LSU Pre-Dental Society VP/Pre-Dental 101 Coordinator, were assisted by a host of dental school faculty and students from both campuses. ■