

**Louisiana State University Health Sciences Center  
School of Dentistry**

# LIBRARY EXPLORER

*New Acquisitions and News*

**Spring 2002**

## **Library Services**

The Dental Library Advisory Committee recently distributed a user satisfaction and awareness survey to dental school faculty and postgraduate students. Although the responses indicate that almost all users are satisfied with the library, they also show that a large number of people are unaware of our services and resources. Because the role of the library is to enhance the educational, research, and patient care experience of faculty and students, we want to make sure that people know about the services we provide. As the LSUHSC Libraries continue to add new electronic resources, it is important that we inform potential users about them and teach the effective use of these databases. The library still maintains print collections as well, and because we think they are important, we'll continue to promote them in the newsletter from time to time. The Newsletter Browsing Collection is featured in this issue.

One traditional library service at the dental library since it opened in 1972 is our **courier** who delivers books and journals from the Isché Medical Library to the dental library twice daily, Monday through Friday. You can request the dental library staff to order any circulating journal or book, and it will be here that afternoon or the next day. All dental school faculty, students, and staff are invited to use this service.

Another type of document delivery service is **Interlibrary Loan (ILL)**, which provides access to books and journal articles at other libraries. In the article below, Julie Schiavo, ILL librarian, describes the service and what patrons can expect from it.

A third type of document delivery now available through the library is **electronic access to journals and books**. Innopac, the LSUHSC libraries online catalog, provides links to the full text for each journal title, if available. The route to the full text varies among journal titles. Many of our subscriptions to print journals allow LSUHSC patrons to access articles online. The library also subscribes to aggregated publisher services, such as Ideal, Science Direct, and Synergy, which facilitate searching across a large number of titles. However, in these services, the full text is still available only in those journals to which the library has a print subscription. A number of titles have full text available via a database such as InfoTrac, Ovid, or MDConsult, and it is necessary to connect to that search service to find the desired article. Some journals restrict access to library staff members, and we will be glad to assist you in these cases.

Linkout, a new feature of Pubmed, the MEDLINE gateway at the National Library of Medicine, provides a link from a citation in the database to electronic journals to which the LSUHSC libraries subscribe. Go into Pubmed from the dental library home page in order to link to the full text for these particular titles.

If you have any questions about how to locate electronic journals, please contact a library staff member. Availability of years differs for each journal title. And remember that for journals to which the LSUHSC Libraries don't subscribe, the Interlibrary Loan Service is the best way to obtain copies of articles.

## **Interlibrary Loan Service**

The LSUSD library continues to offer a full range of interlibrary loan (ILL) services. If you need a journal article, book, or other item that the LSUHSC libraries do not own, we can make requests to other libraries throughout the country to get it for you as quickly as possible.

### The Forms

To make the process of requesting materials for interlibrary loan even easier, we have posted the ILL forms on the LSUSD library web site under the Services heading. Fill out the Word form online, and send it to us as an e-

mail attachment, or print out the form in PDF format, fill it out, and bring it in. As always, we have forms here behind the circulation desk for your convenience. Please be sure to fill out the whole form, answer all the questions, and make your request well in advance of the date you need the item. The due date for the item and any charge there might be are determined by the lending library, not LSUSD.

#### The Methods

The library obtains ILL articles through many different means. The most traditional is the U.S. Postal Service. It takes the longest, but it is the only way we can get certain items from one place to another. The most popular way of sending and receiving journal articles is *Ariel*, which enables one library to scan an article and send it through the Internet to another. *Ariel* allows us to get a high quality copy of an article to you very quickly, sometimes the same day the request was made. Fax service is also available, but the copy quality is poor and long-distance telephone bills add up. There is a \$5 surcharge on each faxed article. We ask that you not request a fax unless it is for a clinical emergency.

#### The Charges

The library is able to obtain most but not all requested materials free of charge. We have entered into reciprocal borrowing arrangements with several libraries throughout the south central region of the U.S., and, as a result, we do not charge each other for interlibrary loan transactions. Membership in this consortium has given us such great success in saving you money and allows us to deliver articles to you as quickly as possible. If we cannot obtain an article, book, or other item through our regular ILL lenders, we will have to go outside the consortium, and there will usually be a charge by the lending library. Costs for these materials tend to be between \$9.00 and \$15.00. These requests also take longer to fill.

#### The Law

Another thing to consider about obtaining journal articles is copyright law. For interlibrary loans, the vast and murky copyright law can be simplified into a couple of basic factors: time and amount. Within any calendar year, a library is allowed to borrow no more than five articles from any one journal published in the past five years. After the five-article limit has been reached, the library must pay copyright fees to the journal to obtain additional articles published in the past five years or wait to request the article until the next calendar year. A library is also not allowed to borrow more than one article from any one issue of a recent journal regardless of the five-article, five-year limit. If a library does request more than one article from an issue, it must pay copyright fees on the additional articles. In other words, even if no one else has made any requests for any articles from a journal, we cannot borrow more than one article within one issue without paying copyright fees. Therefore, we are not able to request an entire issue or supplement of a journal. Copyright fees vary greatly from journal to journal. Some are only \$.10 per page while others charge a \$30 base fee and then \$1 per page or more. The librarian will let you know if your request will require paying copyright fees before she sends the request.

#### The Future

There are some great changes on the horizon for the interlibrary service here at LSUSD. This summer we will be implementing a new system called ILLiad. ILLiad will enable you to submit your ILL request to us via computer. Also, and most exciting, this system will allow you to access many of your articles electronically if you desire. No more coming into the library to pick up articles – all you will have to do is logon! We will update you closer to the time of implementation with more details and a schedule of classes on this new system.

--Julie Schiavo

### ***The Browsing Collection: A Wealth of Dental News***

In addition to the titles listed in Innopac, the dental library maintains a collection of newsletters, bulletins, reports, and a host of other ephemeral materials that we believe to be of interest to our patrons. Throughout the year, we receive a wide variety of publications that we make available for our patrons to peruse at their leisure where the current unbound journals are shelved. Although referred to collectively as the Browsing Collection, this compilation of publications is comprised of two distinct sections: Louisiana Newsletters and Newsletter Browsing.

The Louisiana Newsletters section is precisely what its name implies: a collection of publications from various sources throughout the state. The majority of these publications are LSUHSC newsletters. However, the section also has bulletins from such diverse sources as the State Library of Louisiana and the Gillis Long Hansen's Disease Center. We also strive to maintain copies of newsletters from the various regional and state dental societies, such as the New Orleans Dental Hygienists' Association, the Louisiana Dental Association, and the Greater Baton Rouge Dental Association. The current year of Louisiana newsletters is on display; all prior issues of all Louisiana newsletters are permanently retained in the serials office.

The Newsletter Browsing section is markedly larger than its Louisiana-only counterpart. This section houses international and domestic newsletters, bulletins, journals, and other similar publications. The subjects that these publications address are varied, but most concern dentistry. We maintain an assortment of materials, from dental school bulletins such as the *University of Tennessee Alumni Bulletin*, to state dental society newsletters such as the Oregon Dental Association *Membership Matters*, to advertising supplements included in journals, such as *Strategies for Success*. We also display many popular dental magazines such as *Contemporary Esthetics and Restorative Practice*, *Dentist's Money Digest*, and *Dental Practice Report*. In addition to the many dental publications, this section holds numerous higher education and general scientific bulletins. *The Chronicle of Higher Education*, *Journal of Pain*, *University Business*, and *American Scientist* are just a few of the titles that one can find in Newsletter Browsing. Though the library keeps all previous issues of Louisiana newsletters, it keeps items in the Newsletter Browsing collection on file for the current and previous year only. There are some exceptions to this policy, and it is best to consult a library staff member if you are looking for a particular item in this section.

At first glance it may appear that there is no discernable order by which all of the browsing materials are displayed, but the items in both sections of the Browsing Collection are filed by the parent organization, and not by the publication title. The front cover should have an indication of how that particular newsletter is to be filed.

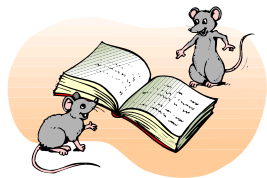
The contents of both components of the Browsing Collection are always changing, because we rely on the generosity of LSUSD faculty and, in most cases, the publishers themselves for donations of the newsletters in this collection. The library staff has access to a database that tracks such changes, and they will be able to provide detailed holdings information. --Becky Bealer

### **Food for Thought ... Except in the Library**

You may have noticed a few new warning signs around the library. Lately, we have felt the need to remind our patrons of what are essentially universal truths where the library is concerned.

The library is the hub of the research community. To be a good library, that facility should be user-friendly. We make every effort to help our patrons in the use of our materials and equipment. However, there are two elements of student life that are the bane of our existence: **FOOD** and **BEVERAGES**. We appreciate that you are trying to save time by nourishing your body while you nourish your mind, but the risks are too high.

In the course of touring the library to pick up used materials, we have discovered a wide array of contraband: apple cores, orange and banana peels, chip and cookie wrappers of every variety, and even the remains of someone's dinner. These things attract the kind of pests that do irreparable damage to library materials. Rats, mice, and roaches love books and journals. They are not avid readers, but connoisseurs of the printed page.



And if there is a smudge from a greasy thumb, it's all the more tasty. They will also eat through computer wires. Beverage containers also abound. Unopened, they are not a problem. But an open container is an invitation to disaster! Even an accidental spill of water can ruin an expensive journal or irreplaceable book or damage computer keyboards. And drinks with sugar not only ruin books and journals but also attract ants. Ants won't do as much damage to books as rats but it is hard to study when they are crawling up your legs!

We sympathize with you that you don't have a student union in which to relax and socialize but your cooperation in this is essential to ensure the availability of the collection for future patrons. Therefore, please help us protect our collection of materials and provide a clean, quiet, pest-free environment in which to use those materials. --Valerie Hernandez

### **Web of Science & Other ISI Databases**

The LSUHSC Libraries now subscribe to 3 databases produced by the Institute for Scientific Information. *Web of Science (WOS)*, *Current Contents Connect (CCC)*, and *Journal Citation Reports (JCR)* are exciting additions to our collection of databases and search services. The subscription to *WOS* includes Science Citation Index Expanded and Social Sciences Citation Index, limited to articles published since 1997.

The strength of *WOS* is cited reference searching. The record for each article in the database includes the list of references cited in that article as well as more recent articles that cite the original paper. With *WOS*, you can

find out who has cited your own articles or find later works related to a known article. It allows you to trace the history of a concept, finding both earlier and more current articles.

In *WOS*, topics are searched with keywords supplied by authors and indexers, not by controlled vocabulary. Therefore, it is important to "OR" together synonyms and to use the truncation symbol (\*) liberally in order to pick up various forms of a word, such as plurals and British spellings. For example, *colo\*r\** will retrieve articles with *color*, *colour*, *colours*, *colors*, or *coloring*.

Clicking on the "Related Records" link at the top of an entry pulls up articles that share at least one cited reference. If an article record has a link to *CCC*, you can go directly to the table of contents for that issue to find other articles that may be on the same topic. You also can click on the *JCR* button to view the impact factor of the journal. Some records also have links to full-text, when available via the LSUHSC libraries.

*JCR* provides data for determining the importance of journals according to how often they are cited in the literature. This multidisciplinary database covers over 5,000 science journals and 1,700 social science journals, searchable by discipline or by journal title. Examples of the information that *JCR* provides are the journal impact factor, which measures how frequently the average article in a journal has been cited in a particular year; a list of journal rankings in a field; and the total number of citations from a journal in a year. For example, in the field of dentistry, oral surgery, and medicine for 2000, *Journal of Dental Research* ranks #1, with 7,980 total cites and an impact factor of 4.438.

*Web of Science* provides a different approach to the literature than MEDLINE and is a valuable complement to searching in Ovid or PubMed. Although *WOS* is easy to use, the dental librarians will be happy to demonstrate how to use the system or to answer any questions about the ISI online products.

--Elizabeth Strother

### **Recent Acquisitions**

#### **Circulating and Reserve Books**

Robert, Henry M. **Robert's rules of order; newly revised.** 10th ed. Cambridge, Mass., Perseus Publishing, 2000. (JF 515 R54r 2000)

Chase, Robert A. **Clinical anatomy atlas.** St. Louis, Mosby, 1996. (QS 17 C38c 1996)

Clemente, Carmine D. **Anatomy: a regional atlas of the human body.** 4th ed. Balt., Williams & Wilkins, 1997. (QS 17 C59a 1997)

Rohen, Johannes W. **Color atlas of anatomy: a photographic study of the human body.** 5th ed. Phila., Lippincott Williams & Wilkins; Stuttgart, Germany, Schattauer, 2002. (QS 17 R63c 2002)

Sobotta, Johannes. **Sobotta atlas of human anatomy.** 13th ed. Phila., Lippincott Williams & Wilkins, 2001. 2 vols. (QS 17 So2a 13th)

Clemente, Carmine D. **Clemente's anatomy dissector: a brief text and guides to individual dissections in human anatomy.** Phila., Lippincott Williams & Wilkins, 2002. (QS 130 C59 2002)

True, Bev-Lorraine. **Dreisbach's handbook of poisoning: prevention, diagnosis and treatment.** 13th ed. Boca Raton, Parthenon Publishing Group, 2002. (QV 600 T76 2002)

Calderone, Richard A. **Candida and candidiasis.** Washington, D.C., ASM Press, 2002. (QW 180 C12c 2002)

Bengel, Wolfgang. **Mastering dental photography.** Berlin; Chicago, Quintessenz Verlags-GmbH, 2002. (TR 708 B43m 2002)

Guyatt, Gordon. **Users' guides to the medical literature: a manual for evidence-based clinical practice.** Chicago, AMA Press, 2002. (WB 100 G99u 2002) *with CD-ROM*

DeGowin, Richard L. **DeGowin's diagnostic examination.** 7th ed. New York, McGraw-Hill, Health Professions Division, 2000. (WB 200 D364 2000)

Abel, Stephen N. **Principles of oral health management for the HIV/AIDS patient.** Phila., Dental Alliance for AIDS/HIV Care, 2000. (WC 503 Ab3p 2000)

Rachlin, Edward S. **Myofascial pain and fibromyalgia: trigger point management.** 2nd ed. St. Louis, Mosby, 2002. (WE 500 R11m 2002)

Shah, Jatin P. **Cancer of the head and neck.** Hamilton, Ont., B.C.Decker, 2001. (WE 707 Sh2c 2001) *At Isché Library*

Wilson-Pauwels, Linda. **Cranial nerves in health and disease.** 2nd ed. Hamilton, Ont.; London, Decker, 2002. (WL 330 C69c 2002) *with CD-ROM*

Weiner, Richard S. **Pain management: a practical guide for clinicians.** 6th ed. Boca Raton, Fla., CRC Press, 2002. (WL 704 W42p 2002)

Hartland, John H. **Hartland's medical and dental hypnosis.** 4th ed. Edinburgh; New York, Churchill Livingstone, 2002. (WM 415 H25m 2002)

Dionne, Raymond A. **Management of pain and anxiety in the dental office.** Phila., Saunders, 2002. (WO 460 D62ma 2002)

Nuttall, Nigel N. **A guide to the UK adult dental health survey 1998.** London, British Dental Association, 2001. (WU 16 N96g 2001)

Johnson, William T. **Color atlas of endodontics.** Phila., Saunders, 2002. (WU 17 J63c 2002)

Scully, Crispian. **A color atlas of orofacial health and disease in children and adolescents: diagnosis and management.** 2nd ed. London, Martin Dunitz, 2002. (WU 17 Sc4co 2002)

Darby, Michele L. **Mosby's comprehensive review of dental hygiene.** 5th ed. St. Louis, Mosby, 2002. (WU 18 D24 2002) *with CD-ROM*

Dietz, Ellen R. **Safety standards and infection control for dental assistants.** Albany, Delmar, Thomson Learning, 2002. (WU 29 D56s 2002)

Dental Care Considerations of Disadvantaged and Special Care Populations Conference, Baltimore, Maryland, 2001. **Dental care considerations of disadvantaged and special care populations; proceedings.** Washington, D.C., Government Printing Office, 2001. (WU 30 D43d 2001)

Lees, David H. **Understanding managed care contracts: a practical guide for dental professionals.** Tulsa, Okla., PennWell, 1999. (WU 77 L51u 1999)

Prescott, William P. **Business, legal and tax planning for the dental practice.** 2nd ed. Tulsa, Okla., PennWell Books, 2001. (WU 77 P92b 2001)

Serio, Francis G. **Understanding dental health.** Jackson, University Press of Mississippi, 1998. (WU 80 Se6u 1998)

American Dental Association. Health Policy Resources Center. **Future of dentistry: today's vision: tomorrow's reality.** Chicago, American Dental Association, 2001. (WU 100 Am351f 2001)

Neville, Brad W. **Oral & maxillofacial pathology.** 2nd ed. Phila., Saunders, 2002. (WU 140 N41o 2002)

Scully, Crispian M. **Handbook of oral disease: diagnosis and management.** 2nd ed. London, Martin Dunitz, 2001. (WU 140 Sc4h 2001)

Silverman, Sol. **Essentials of oral medicine.** Hamilton, Ont, BC Decker Inc., 2001. (WU 140 Si3e 2001) *with CD-ROM*



Topazian, Richard G. **Oral and maxillofacial infections.** 4th ed. Phila., Saunders, 2002. (WU 140 T62m 2002)

Pitt Ford, Thomas R. **Endodontics: problem-solving in clinical practice.** London, Martin Dunitz, 2002. (WU 230 P68e 2002)

Albers, Harry F. **Tooth-colored restoratives.** 9th ed. Hamilton, Ont, B.C. Decker, 2002. (WU 360 AL2t 2002) *with CD-ROM*

Bennett, John C. **Orthodontic management of the dentition with the preadjusted appliance.** London; New York, Mosby, 2002. (WU 400 B43or 2002)

Koch, Goran. **Pediatric dentistry: a clinical approach.** Copenhagen, Munksgaard, 2001. (WU 480 K81pe 2001)

Klugman, Robert S. **Prosthodontics in clinical practice.** London, Martin Dunitz, 2002. (WU 500 K71p 2002)

Devlin, Hugh. **Complete dentures: a clinical manual for the general dental practitioner.** Berlin; New York, Springer, 2002. (WU 530 D49c 2002)

Jensen, Ole T. **Alveolar distraction osteogenesis.** Chicago, Quintessence, 2002. (WU 600 J45a 2002) *McLean Collection*

Health Care Communication Group. **Writing, speaking, & communication skills for health professionals.** New Haven, Yale University Press, 2001. (WZ 345 H34w 2001)

### **Reference Collection**

**County and city extra, 2002: special decennial census edition.** 10th ed. Lanham, MD, Bernan Press, 2002. (HA 202 C83 2002)

**Statistical abstract of the United States, 2001.** 121st ed. Washington, D.C., Bureau of the Census, 2001. (HA 202 Un3s)  
<http://www.census.gov/prod/2002pubs/01statab/stat-ab01.html>

Louisiana State University Health Sciences Center. **Diversity program for Louisiana State University, Health Sciences Center, New Orleans, Louisiana.** New Orleans, LA, 2001. (HF 5549.5.M5 L93 2000/01)

American Society of Health-System Pharmacists. **American Hospital Formulary Service drug information 2002.** Bethesda, MD, American Society of Health-System Pharmacists, 2002. (QV 740 AA1 Am30 2002)

**The Official ABMS directory of board certified medical specialists, 2002.** St. Louis, Elsevier Science, 2001. 4 vols. (W 22 AA1 Of2)

American Dental Association. Survey Center. **1998 survey of dental school satellite clinics; and, The 1998 dental society survey of dental school satellite clinics.** Chicago, American Dental Association, 1999. (WU 19 Am35 1999)

Louisiana. Laws, Statutes, etc. **Laws of the State of Louisiana governing the practice of dentistry as authorized under Chapter 9, Title 37, Louisiana Revised Statutes, as amended through regular session 2001 and Louisiana Administrative Code, Title 46, Chapter 33.** New Orleans, LA, 2001. (WU 32 AL6 L93 2001)

American Dental Association. **Principles of ethics and code of professional conduct.** rev. to April 2001. Chicago, American Dental Association, 2001. (WU 50 Am3p 2001)

American Dental Association. Survey Center. **Consumer price index for dental services, 1960 through 1999.** Chicago, American Dental Association, 2000. (WU 77 Am3con 2000)

## **Audiovisual Materials**

**Louisiana State University Health Sciences Center. School of dentistry.** [Videocassette] Metairie, LA, WLAE, 2002. (VC no.235)

### **LSUSD Faculty Publications**

Abadie JM, Malcom GT, Porter JR, Svec F. Dehydroepiandrosterone alters phospholipid profiles in Zucker rat muscle tissue. *Lipids* 2001 Dec;36(12):1383-6.

Arch G, Blatz MB, Sadan A, Head C, Xu X, Burgess JO, Chiche GJ. Effect of silanization on the bond strength of a modified resin cement to Procera Allceram alumina intaglio surface. *J Dent Res* 2002 Mar;81(Spec Iss A):A-74 (IADR abstract no. 384).

Baudin G II, Burgess JO. Flexural strength of fourteen cements. *J Dent Res* 2002 Mar;81(Spec Iss A):A-169 (IADR abstract no. 1211).

Bell M, Burgess JO, Xu X. Fracture toughness of eight composite resin materials. *J Dent Res* 2002 Mar;81(Spec Iss A):A-423 (IADR abstract no. 3432).

Ber B, Lemon R. The effect of ultrasonic application on selected physical properties of mineral trioxide aggregate. *J Dent Res* 2002 Mar;81(Spec Iss A):A-427 (IADR abstract no. 3470).

Blatz MB, Sadan A, Arch G, Head C, Xu X, Burgess JO, Chiche GJ. Bonding to Procera Allceram alumina intaglio surface after different surface treatments. *J Dent Res* 2002 Mar;81(Spec Iss A):A-74 (IADR abstract no. 385).

Blatz MB, Sadan A, Kern M. Bonding to silica-based ceramics: clinical and laboratory guidelines. *QDT* 2002;54-62.

Block MS. Effect of calcium phosphate surface coating on bone ingrowth onto porous-surfaced titanium alloy implants in rabbit tibiae - discussion. *J Oral Maxillofac Surg* 2002 Apr;60(4):426.

Blumer JB, Chandler LJ, Lanier SM. Expression analysis and subcellular distribution of the two G-protein regulators AGS3 and LGN indicate distinct functionality. localization of LGN to the midbody during cytokinesis. *J Biol Chem* 2002 May;277(18):15897-903.

Bonson S, Spencer A, Jeansonne BG, Lallier TE. Effect of root end filling materials on fibroblast differentiation. *J Dent Res* 2002 Mar;81(Spec Iss A):A-81 (IADR abstract no. 444).

Brannon RB, Fowler CB, Carpenter WM, Corio RL. Cementoblastoma: an innocuous neoplasm? A clinicopathologic study of 44 cases and review of the literature with special emphasis on recurrence. *Oral Surg Oral Med Oral Pathol Oral Radiol Endod* 2002 Mar;93(3):311-20.

Burgess JO, Porche C. Composite hardness cured with four LED and one quartz-tungsten halogen curing lights. *J Dent Res* 2002 Mar;81(Spec Iss A):A-485 (IADR abstract no. 3972).

Burgess JO, Ripps AH, Gallo J, Walker RS, Ireland EJ, Li L. Clinical evaluation of four class 5 restorative materials – 2-year recall. *J Dent Res* 2002 Mar;81(Spec Iss. A):A-79 (IADR abstract no. 427).

Cade JE. Oral cutaneous fistulas. *EMedicine Journal* 2002 Jan;3(2). Internet.

<http://www.emedicine.com/derm/topic660.htm>

Cameron JE, Hickman P, Gaffga AM, O'Brien ME, Fidel Jr PL, Hagensee ME, Leigh JE. Prevalence of HPV in the oral cavity of HIV+ individuals. *J Dent Res* 2002 Mar;81(Spec Iss A):A-229 (IADR abstract no. 1741).

Camp M, Spencer A, Jeansonne BG, Lallier TE. Evaluation of PDL fibroblast adhesion to endodontic root-end filling materials. *J Dent Res* 2002 Mar;81(Spec Iss A):A-81 (IADR abstract no. 445).

Chaconas J, Burgess JO. Shear bond strength of two self-etching adhesives. *J Dent Res* 2002 Mar;81(Spec Iss A):A-161 (IADR abstract no. 1141).

Chandrasekher G, Ma X, Lallier TE, Bazan HE. Delay of corneal epithelial wound healing and induction of keratocyte apoptosis by platelet-activating factor. *Invest Ophthalmol Vis Sci* 2002 May;43(5):1422-8.

Chidlow S, Ripps AH, Burgess JO. Polymerization shrinkage of seven composite resins. *J Dent Res* 2002 Mar;81(Spec Iss A):A-336 (IADR abstract no. 2681).

Comeaux B, Burgess JO, Li L. Color stability of composite resins cured with two techniques. *J Dent Res* 2002 Mar;81(Spec Iss A):A-260 (IADR abstract no. 2007).

Dabir P, Dummett CO, Musselman RJ, Schneider P, Moerschbaecher JM, Gardiner D. Assessment of intranasal administration of midazolam for conscious sedation using an atomizer. *J Dent Res* 2002 Mar;81(Spec Iss A):A-49 (IADR abstract no. 174).

Ding X, Ling L, Xu X, Burgess JO. Effects of silane coupling agents on the fluoride release from experimental dental composites. *J Dent Res* 2002 Mar;81(Spec Iss A):A-255 (IADR abstract no. 1970).

Dragon M, Burgess JO. Dentin bond strength of Fuji II LC with different conditioners. *J Dent Res* 2002 Mar;81(Spec Iss A):A-173 (IADR abstract no. 1248).

Easley K, Boudin J, Burgess JO, Li L. Dentin bond strength of single bond-effects of contaminant removal. *J Dent Res* 2002 Mar;81(Spec Iss A):A-328 (IADR abstract no. 2610).

Fowler MM, Lallier TE. PDL fibroblasts express different osteogenic transcripts than do gingival or dermal fibroblasts. *J Dent Res* 2002 Mar;81(Spec Iss A):A-136 (IADR abstract no. 921).

Gallo J, Ward J, Record B, Burgess JO. Shear bond strength of an experimental self-etching adhesive to contaminated enamel. *J Dent Res* 2002 Mar;81(Spec Iss A):A-328 (IADR abstract no. 2612).

Gaudet S, Burgess JO, Li L. Depth of cure of three composites cured with three curing lights at three times. *J Dent Res* 2002 Mar;81(Spec Iss A):A-85 (IADR abstract no. 482).

Haycock JW, Kumer SC, Lewis DA, Vrana KE, Stockmeier CA. A monoclonal antibody to tryptophan hydroxylase: applications and identification of the epitope. *J Neurosci Methods* 2002 Mar;114(2):205-12.

Herbert JD, Coulson TD, Coulson RA. Growth rates of Chinese and American alligators. *Comp Biochem Physiol A Mol Integr Physiol* 2002 Apr;131(4):909-16.

Hsu CYS, Jordan TH, Dederich DN, Wefel JS. Laser-matrix-fluoride effects on enamel demineralization. *J Dent Res* 2001 Sep;80(9):1797-801.

Hubar JS, Xu X, Pelon W, Xin X. Effect of autoclaving on the mechanical properties of dental syringe tubing. *J Dent Res* 2002 Mar;81(Spec Iss A):A-112 (IADR abstract no. 713).

Hunt J, Burgess JO, Musselman RJ. The correlation of etch pattern to pH in four enamel bonding systems. *J Dent Res* 2002 Mar;81(Spec Iss A):A-74 (IADR abstract no. 388).

Ide K, Ohta M, Kitahara S, Sasahara H, Abiko Y, Nakamoto T. Effects of caffeine on osteoblasts derived from fetal rat calvaria. *FASEB J* 2002 Mar;16(4):A244.

Lindgren N, Goiny M, Herrera-Marschitz M, Haycock JW, Hokfelt T, Fisone G. Activation of extracellular signal-regulated kinases 1 and 2 by depolarization stimulates tyrosine hydroxylase phosphorylation and dopamine synthesis in rat brain. *Eur J Neurosci* 2002 Feb;15(4):769-73.

Lo FS, Ziburkus J, Guido W. Synaptic mechanisms regulating the activation of a Ca(2+)-mediated plateau potential in developing relay cells of the LGN. *J Neurophysiol* 2002 Mar;87(3):1175-85.

Maltezos C, Blatz MB, Soignet D, Xu X, Burgess JO, Chiche GJ. Adhesive bond to leucite reinforced feldspathic porcelain after simulated aging. *J Dent Res* 2002 Mar;81(Spec Iss A):A-73 (IADR abstract no. 382).

Manuel N, Ripps AH, Xu X, Burgess JO. Enamel bond strength of two self-etching adhesives at two



application times. J Dent Res 2002 Mar;81(Spec Iss A):A-161 (IADR abstract no. 1144).

Mayer ET, Yukna RA, Hochstedler J, Thunthy K, Castellon P. Evaluation of polymeric synthetic bone ridge preservation with immediate dental implants. J Dent Res 2002 Mar;81(Spec Iss A):A-437 (IADR abstract no. 3558).

Nakamoto T, Simmons WB, Falster AU. Theobromine increases crystal size. J Dent Res 2002 Mar;81(Spec Iss A):A-192 (IADR abstract no. 1415).

Norris C, Burgess JO. Polymerization shrinkage of seventeen composite resins. J Dent Res 2002 Mar;81(Spec Iss A):A-424 (IADR abstract no. 3435).

Olivier BJ, Craig RL, Armbruster P, Gardiner DM, Winkler MM, Moiseyeva R, Sarkar NK. Shear strength of Zn-treated enamel bonded to orthodontic brackets. J Dent Res 2002 Mar;81(Spec Iss A):A-74 (IADR abstract no. 387)

Perenack J, Wood RJ, Block MS, Gardiner D. Determination of subepithelial connective tissue graft thickness in the dog. J Oral Maxillofac Surg 2002 Apr;60(4):415-21.

Porche C, Burgess JO, Li L. Composite hardness cured with two curing lights at two times. J Dent Res 2002 Mar;81(Spec Iss A):A-85 (IADR abstract no. 483).

Prasad A, Day GP, Sarkar NK. Relevance of ISO corrosion test for ion release. J Dent Res 2002 Mar;81(Spec Iss A):A-487 (IADR abstract no. 3982).

Qian L, Yang T, Chen H, Xie J, Zeng H, Warren DW, MacVeigh M, Meneray MA, Hamm-Alvarez SF, Mircheff AK. Heterotrimeric GTP-binding proteins in the lacrimal acinar cell endomembrane system. Exp Eye Res 2002 Jan;74(1):7-22.

Raigrodski AJ, Block MS. Clinical considerations for enhancing the success of implant-supported restorations in the aesthetic zone with delayed implant placement. Pract Proced Aesthet Dent 2002 Jan-Feb;14(1):21-8.

Ripps AH, Burgess JO, Rappold A, Gallo J, Grogona A, Li L. Three year clinical evaluation of self-etching adhesive with a compomer material. J Dent Res 2002 Mar;81(Spec Iss A):A-81 (IADR abstract no. 446).

Ritwik P, Ber B, Moiseyeva R, Sarkar NK. In vitro simulation of the apical barrier at MTA-dentin interface and its characterization. J Dent Res 2002 Mar;81(Spec Iss A):A-391 (IADR abstract no. 3156).

Sadan A. Clinical assessment of precision of fit. Pract Proced Aesthet Dent 2002 Jan-Feb;14(1):18.

Sadan A, Blatz MB, Xu X, Burgess JO, Chiche GJ. Comparative bond strength of two dentin bonding agents to dry, moist, and wet dentin. J Dent Res 2002 Mar;81(Spec Iss A):A-72 (IADR abstract no. 368).

Sarkar NK, Saunders B, Moiseyevai R, Berzins DW, Kawashima I. Interaction of mineral trioxide aggregate (MTA) with a synthetic tissue fluid. J Dent Res 2002 Mar;81(Spec Iss A):A-391 (IADR abstract no. 3155).

Sigsworth P, Ripps AH, Burgess JO. Bond strength of two self-etching adhesives to enamel with different roughness. J Dent Res 2002 Mar;81(Spec Iss A):A-161 (IADR abstract no. 1145).

Slavinsky J 3rd, Myers T, Swoboda RK, Leigh JE, Hager S, Fidel PL Jr. Th1/Th2 cytokine profiles in saliva of HIV-positive smokers with oropharyngeal candidiasis. Oral Microbiol Immunol 2002 Feb;17(1):38-43.

Soignet D, Blatz MB, Maltezos C, Xu X, Burgess JO, Chiche GJ. Bond strength to densely sintered alumina after long-term storage and thermocycling. J Dent Res 2002 Mar;81(Spec Iss A):A-73 (IADR abstract no. 383).

Soileau KM, Aydin BG, Davenport WD Jr. Evaluation of frozen subepithelial connective tissue grafts to increase the zone of attached gingiva. Report of 5 cases. J Periodontol 2002 Feb;73(2):220-30.

Starkey J, Schneider P, Sarkar N, Dummett C, Musselman R, Gardiner D, Winkler MM. Comparison of failure loads of prefabricated posterior composite crowns to posterior composite strip crowns. J Dent Res 2002

Mar;81(Spec Iss A):A-335 (IADR abstract no. 2669).

Steele C, Fidel PL Jr. Cytokine and chemokine production by human oral and vaginal epithelial cells in response to *Candida albicans*. *Infect Immun* 2002 Feb;70(2):577-83.

Takesono A, Nowak MW, Cismowski M, Duzic E, Lanier SM. Activator of G-protein signaling 1 blocks GIRK channel activation by a G-protein-coupled receptor. Apparent disruption of receptor signaling complexes. *J Biol Chem* 2002 Apr;277(16):13827-30.

Thunthy KH. Effect of over- and underexposure on the sharpness of the image of a marker in computer-assisted dental implant tomography. *J Dent Res* 2002 Mar;81(Spec Iss A):A-177 (IADR abstract no. 1280).

Tolbert S, Xu X, Burgess JO, Thunthy K. Radiopacity of flowable and posterior dental composites. *J Dent Res* 2002 Mar;81(Spec Iss A):A-258 (IADR abstract no. 1996).

Turner J, Burgess JO. Flexural strength of light and chemically cured dual cured resin cements. *J Dent Res* 2002 Mar;81(Spec Iss A):A-421 (IADR abstract no. 3414).

Vastardis S, Fidel P Jr, Wozniak K, Yukna R, Leigh JE. Th1/Th2 cytokines in saliva of HIV+ individuals with periodontal disease. *J Dent Res* 2002 Mar;81(Spec Iss A):A-120 (IADR abstract no. 783).

Visona K, Baez F, Taylor L, Berrios R, Leon B, Pacheco C, Jiron R, Luftig RB, Somarriba M M. Impact of hepatitis B and hepatitis C virus infections in a hematology-oncology unit at a children's hospital in Nicaragua, 1997 to 1999. *Clin Diagn Lab Immunol* 2002 May;9(3):622-6.

Wade AG, Walker RS, Iazzetti G, Sarkar NK. Effect of zinc, time and surface treatments on gold-amalgam galvanic interaction. *J Dent Res* 2002 Mar;81(Spec Iss A):A-171 (IADR abstract no. 1228).

Weathersby J, Burgess JO, Xu X. Flexural strength and modulus of composite resin restorative materials. *J Dent Res* 2002 Mar;81(Spec Iss A):A-336 (IADR abstract no. 2682).

Winkler MM, Walker RS. How storage and mixing affect a resin-modified glass ionomer. *J Dent Res* 2002 Mar;81(Spec Iss A):A-168 (IADR abstract no. 1201).

Winkler MM, Weathersby J, Xu X, Burgess JO, Wang L. Effect of chewing tobacco on wear of posterior resin composites. *J Dent Res* 2002 Mar;81(Spec Iss A):A-336 (IADR abstract no. 2676).

Winkler MM, Xin X, Weathersby J, Xu X, Burgess JO, Worthington P. Effect of chewing tobacco on compressive strength of resin restoratives. *J Dent Res* 2002 Mar;81(Spec Iss A):A-336 (IADR abstract no. 2679).

Wozniak KL, Arribas A, Leigh JE, Fidel PL Jr. Inhibitory effects of whole and parotid saliva on immunomodulators. *Oral Microbiol Immunol* 2002 Apr;17(2):100-7.

Wozniak KL, Leigh JE, Hager S, Swoboda RK, Fidel PL. A comprehensive study of candida-specific antibodies in the saliva of human immunodeficiency virus-positive individuals with oropharyngeal candidiasis. *J Infect Dis* 2002 May;185(9):1269-76.

Xu X, Xin X, Weathersby J, Burgess JO. In vitro wear and toothbrush abrasion of flowable and posterior dental composites. *J Dent Res* 2002 Mar;81(Spec Iss A):A-258 (IADR abstract no. 1997).

Yukna RA, Krauser JT, Callan DP, Evans GH, Cruz R, Martin M. Thirty-six month follow-up of 25 patients treated with combination anorganic bovine-derived hydroxyapatite matrix (Abm)/cell-binding peptide (P-15) bone replacement grafts in human infrabony defects. I. Clinical findings. *J Periodontol* 2002 Jan;73(1):123-8.

Yukna RA, Mayer ET. Peptide-enhanced bone replacement grafts in flowable form in dogs. *J Dent Res* 2002 Mar;81(Spec Iss A):A-480 (IADR abstract no. 3925).