

## Contact Us

### John P. Isché Library

433 Bolivar St.  
New Orleans, LA 70112-2223  
<http://www.lsuhs.edu/library>

#### CIRCULATION

504-568-6100  
[icirc@lsuhsc.edu](mailto:icirc@lsuhsc.edu)

#### REFERENCE

504-568-6102  
[reference@lsuhsc.edu](mailto:reference@lsuhsc.edu)

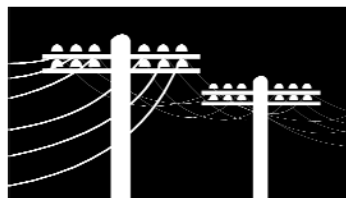
#### INTERLIBRARY LOAN

504-568-6101  
[ILL@lsuhsc.edu](mailto:ILL@lsuhsc.edu)

### Dental School Library

1100 Florida Ave.  
New Orleans, LA 70119-2477  
<http://www.lsuhs.edu/library/information/dental.aspx>

504-941-8158



## Library Layouts

The Isché Library occupies the 3rd, 4th, and 5th floors of the Resource Center. Photocopiers and Library System computers are located on each floor.

### Third Floor

Entrance & Exit  
24 hour Library Commons  
Departments & Offices  
Reference & Reserve materials

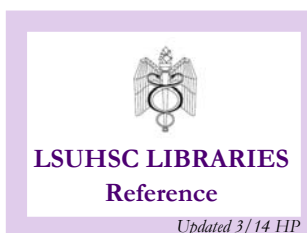
### Fourth Floor

Group Study Rooms  
Books/Monographs (shelved by call number)  
Computer Lab (Room 401K)  
Computer Services Classroom (Room 405)  
Rare Books Collection

### Fifth Floor

Journals (shelved alphabetically)

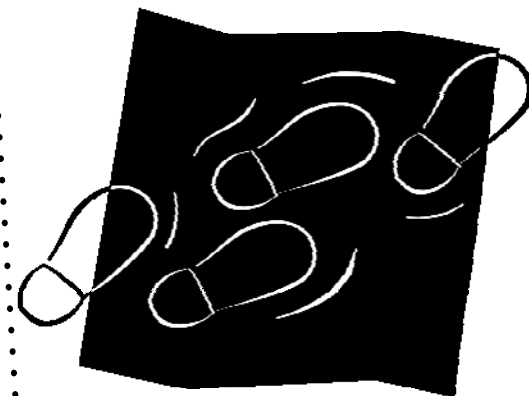
The Dental Library is located on the 3rd floor of the Dental School Administration Building.



 **LSUHealthNewOrleans**  
Division of Libraries

## Library Information

Introductory  
Guide to the  
Libraries



# Library Information

Search the Library Catalog:  
<http://innopac.lsuhs.edu/>

## Loan Periods

Books/Monographs	2 weeks; 1 renewal
General Reserve Books	Overnight; checkout 1 hour before closing, due 1 hour after opening the next day
Journals/Periodicals	
Bound	1 week; no renewals
Unbound	1 day; no renewals
Nursing Journals	Do not circulate

## Borrowing Privileges

All Library patrons must bring proper ID each time they use the Library.

<u>Institution</u>	<u>Available to</u>	<u>Proper ID</u>
LSUHSC	Faculty, Staff, Students & Residents	LSUHSC ID
Tulane Medical Center	Faculty, Residents, Staff & Students	TMC ID

Area Licensed Health Professionals	Driver's license & appropriate health license
------------------------------------	---

## Reserve Materials

are kept behind the Circulation Desks. To retrieve, consult a Library Staff member. Some Reserve items may be taken out of the Libraries on overnight loan.

## Isché Library Hours\*

Monday-Thursday	7:30am-12midnight
Friday	7:30am-8pm
Saturday	9:30am-6pm
Sunday	9:30am-12midnight

\*Please check the [website](#) for Holiday hours.

## Dental Library Hours\*

Monday-Thursday	8am-8pm
Friday	8am-5pm
Closed Saturday	
Sunday	11:30am to 8pm

\*Please check the [website](#) for Holiday hours.

## Reference Hours\*

### Isché Library

Monday-Thursday	8am-8pm
Friday	8am-4:30pm

### Dental Library

Monday-Friday	8am-5pm
---------------	---------

\*Reference Librarians are available during these hours for in-person research assistance as well as over webchat (<http://www.lsuhs.edu/library/resources/help.aspx>) and email ([reference@lsuhsc.edu](mailto:reference@lsuhsc.edu)).

**Interlibrary Loan** is available online via ILLiad. Create a profile and request materials from your office, lab, or home. For more information visit: <http://www.lsuhs.edu/library/services/ill.aspx>

**Electronic Materials** include E-Books and E-Journals. Check the Library [catalog](#) and/or the [E-Journals list](#) for titles.

## Technology

**Photocopying & Printing** are available at both Libraries, but machines will only accept PayPaw cards. If you do not have a PawPaw card, one may be purchased for \$1.

**FEES**  
10¢ per page  
14¢ per double-sided page  
25¢ per color page

## Computer Facilities:

### Open-Use Computer Lab

Both the Libraries have computer labs. An LSUHSC username and password are required.

### Wireless Access and Ethernet Ports

Available throughout the Libraries with LSUHSC login. For assistance, inquire at the Circulation Desks.

### Public Access Computers

Computers are available to all patrons for use within Library Systems, LSUHSC email, and University applications. Open Internet browsing is unavailable.

## For Further Assistance



Isché Library: 504-568-6100  
E-mail: [icirc@lsuhsc.edu](mailto:icirc@lsuhsc.edu)

Dental Library: 504-941-8158  
Email: [dentlib@lsuhsc.edu](mailto:dentlib@lsuhsc.edu)